

# THE LANDSCAPE DIMENSION OF SPATIAL PLANNING AND THE DEVELOPMENT OF A SUPPORTING MECHANISM

Phaedon Enotiades, *BSArch, MArch, MCRP*

# Integration of landscape values into the planning system



*source: Müller and Liebe, Cyprus (Verlag C. J. Bucher GmbH, München, 1986)*

# Landscape character assessment

## Cyprus Landscape Mapping Project

### FINAL REPORT

December 2008

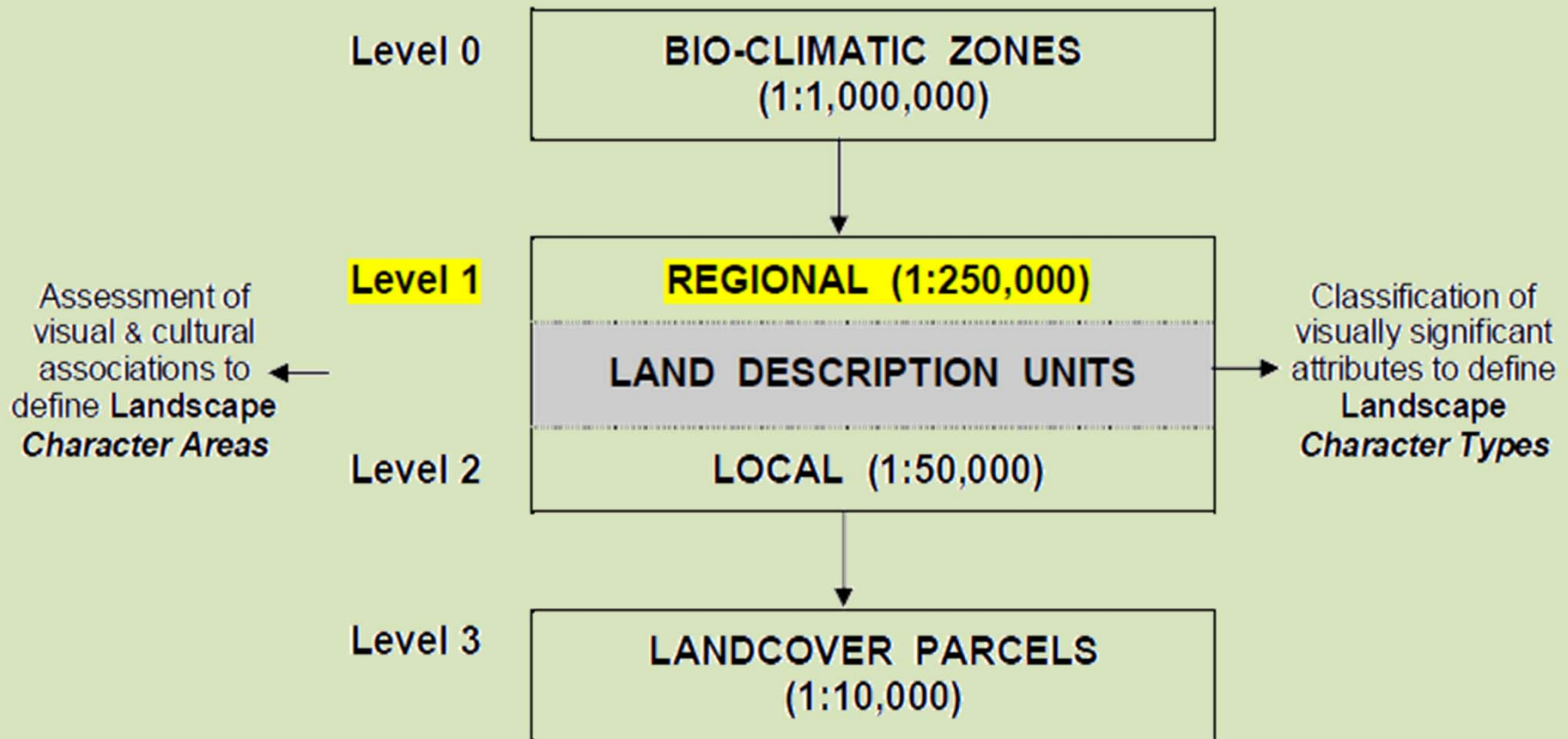
The Landscape Mapping Group  
The University of Reading

*Steven Warnock, Geoffrey Griffiths and Ioannis Vogiatzakis*



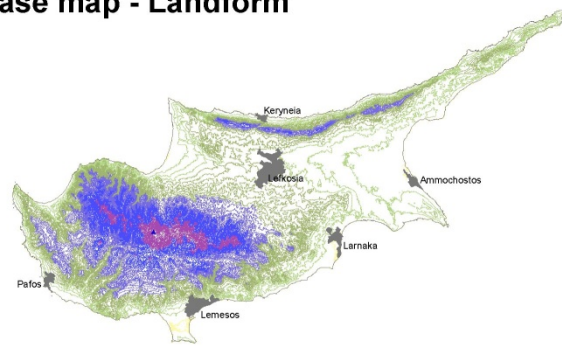
The University of Reading

# Mapping the landscape character

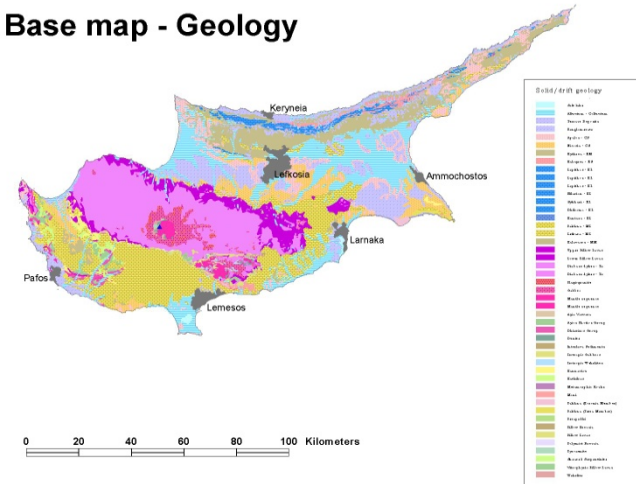


# Data collection and analysis

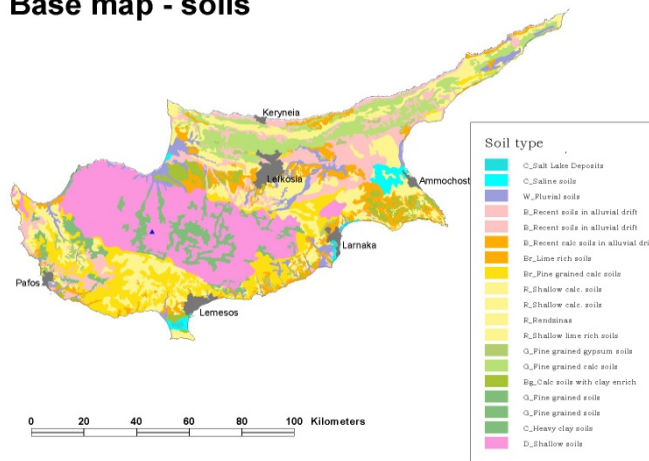
Base map - Landform



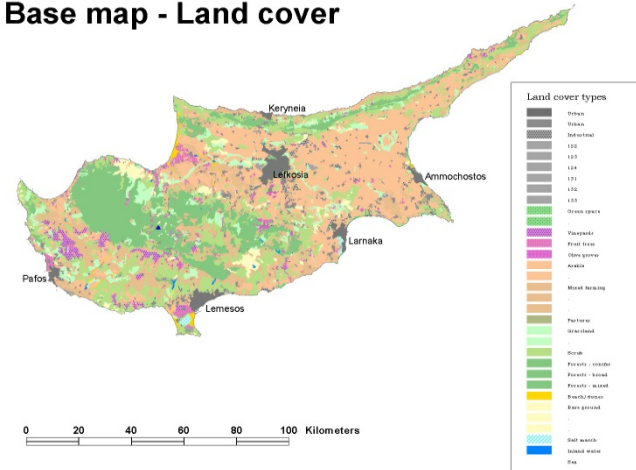
Base map - Geology



Base map - soils



Base map - Land cover



Source: Warnock, Griffiths and Vogiatzakis, 2008

# Field survey and data validation



*Source: Warnock, Griffiths and Vogiatzakis, 2008*

# Towards a landscape typology



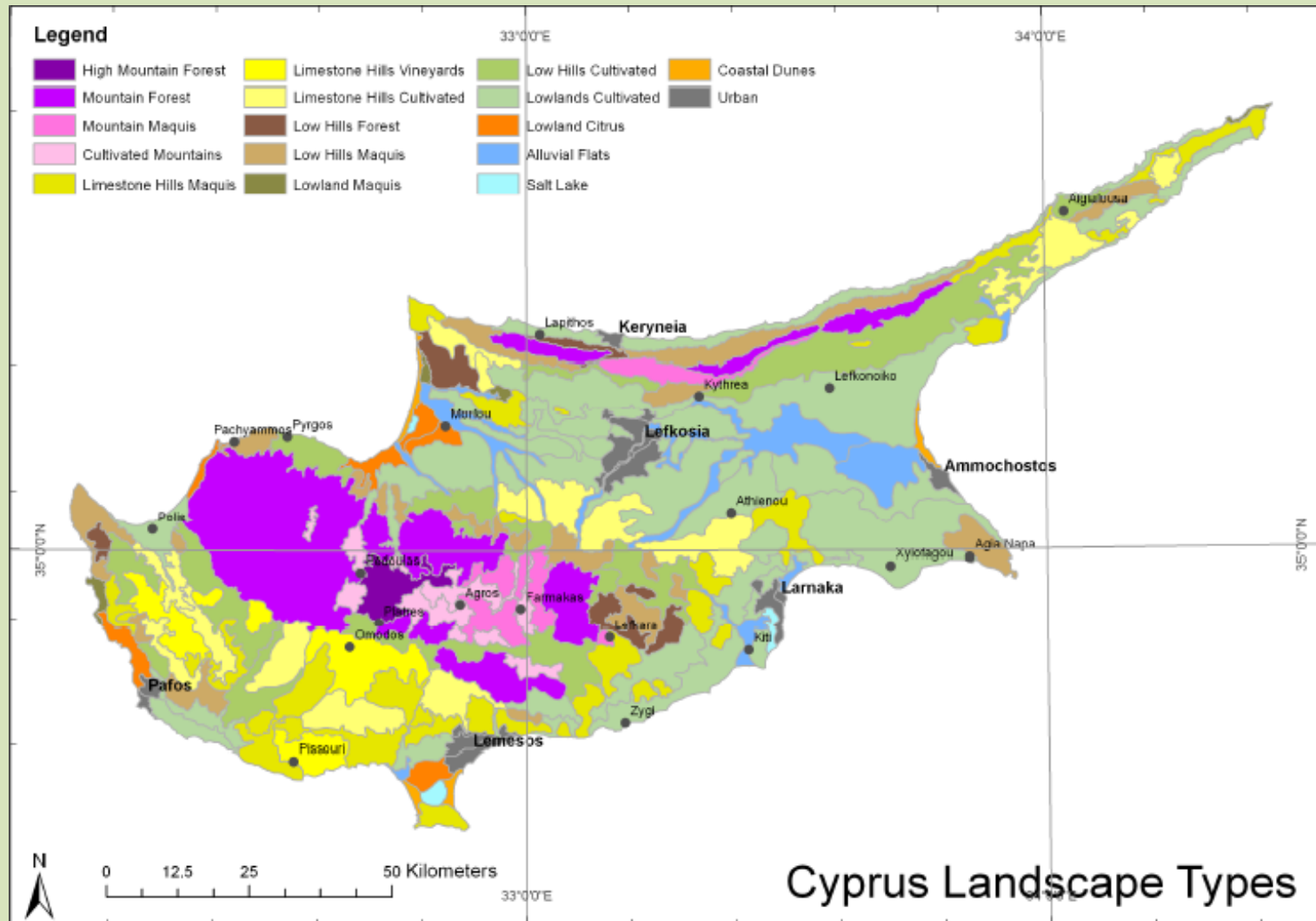
**Mountain Forest.** A heavily wooded, largely unsettled, highland landscape associated with steeply/sloping, high (mostly above 500m) mountains, found typically on resistant volcanic (e.g. Troodos massif) or metamorphic (e.g. Pentadactylos range) geology. Prominent rocky features (e.g. cliffs, ridges) appear in places.



**Cultivated low hills.** An undulating, sparsely settled and cultivated landscape of low (below 500m) hills, with patches of shrubby semi-natural vegetation.

*Source: Warnock, Griffiths and Vogiatzakis, 2008*

# The first *Landscape Type Map*





# Cultural landscape elements

## REPORT ON THE MAPPING OF THE CYPRUS CULTURAL LANDSCAPE

by

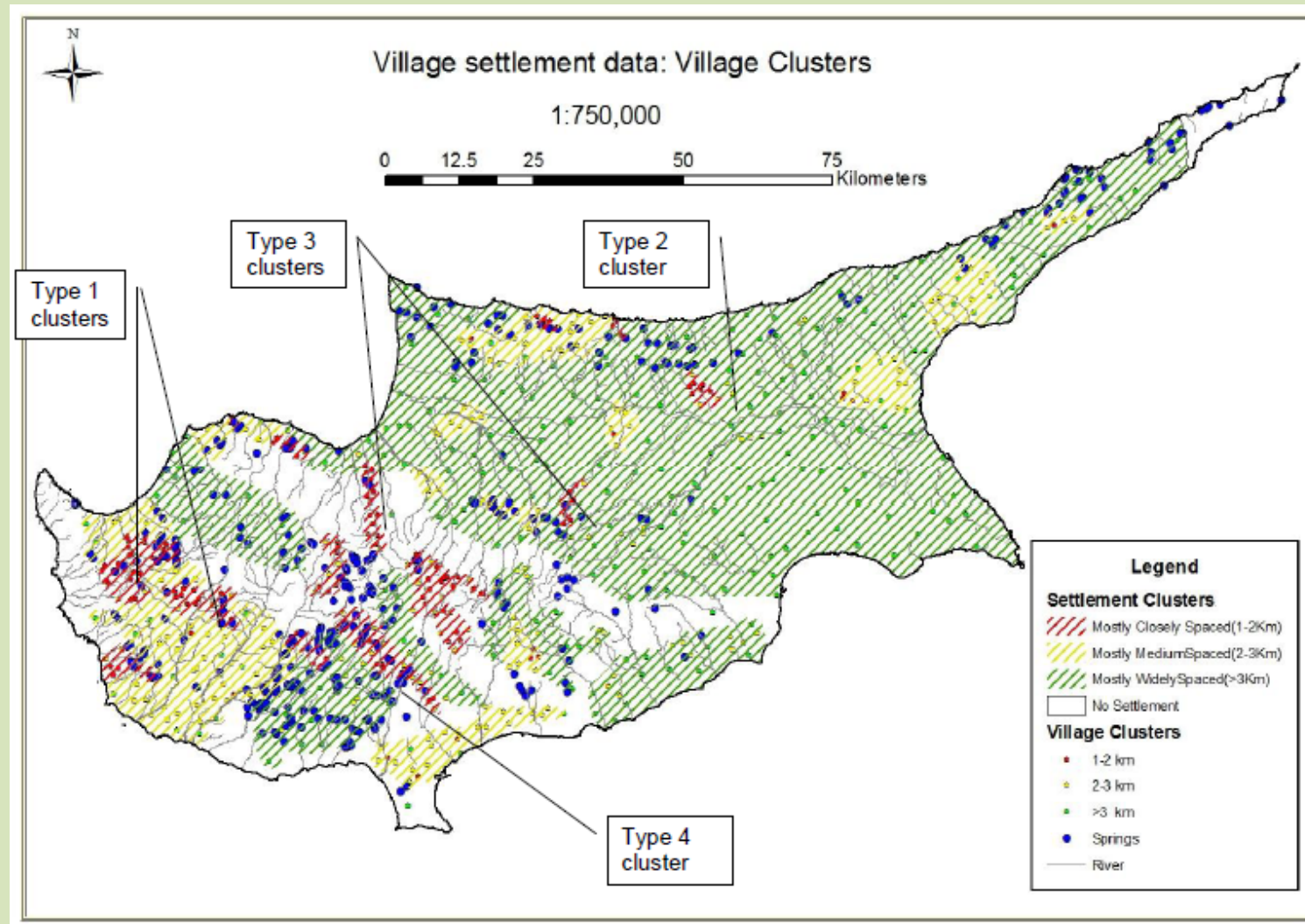
Nicholas Symons (Coordinator), M.A Natural Sciences (Cantab) P.G.C.E

Vassiliki Vassou (Researcher), Agronomist and Topographer



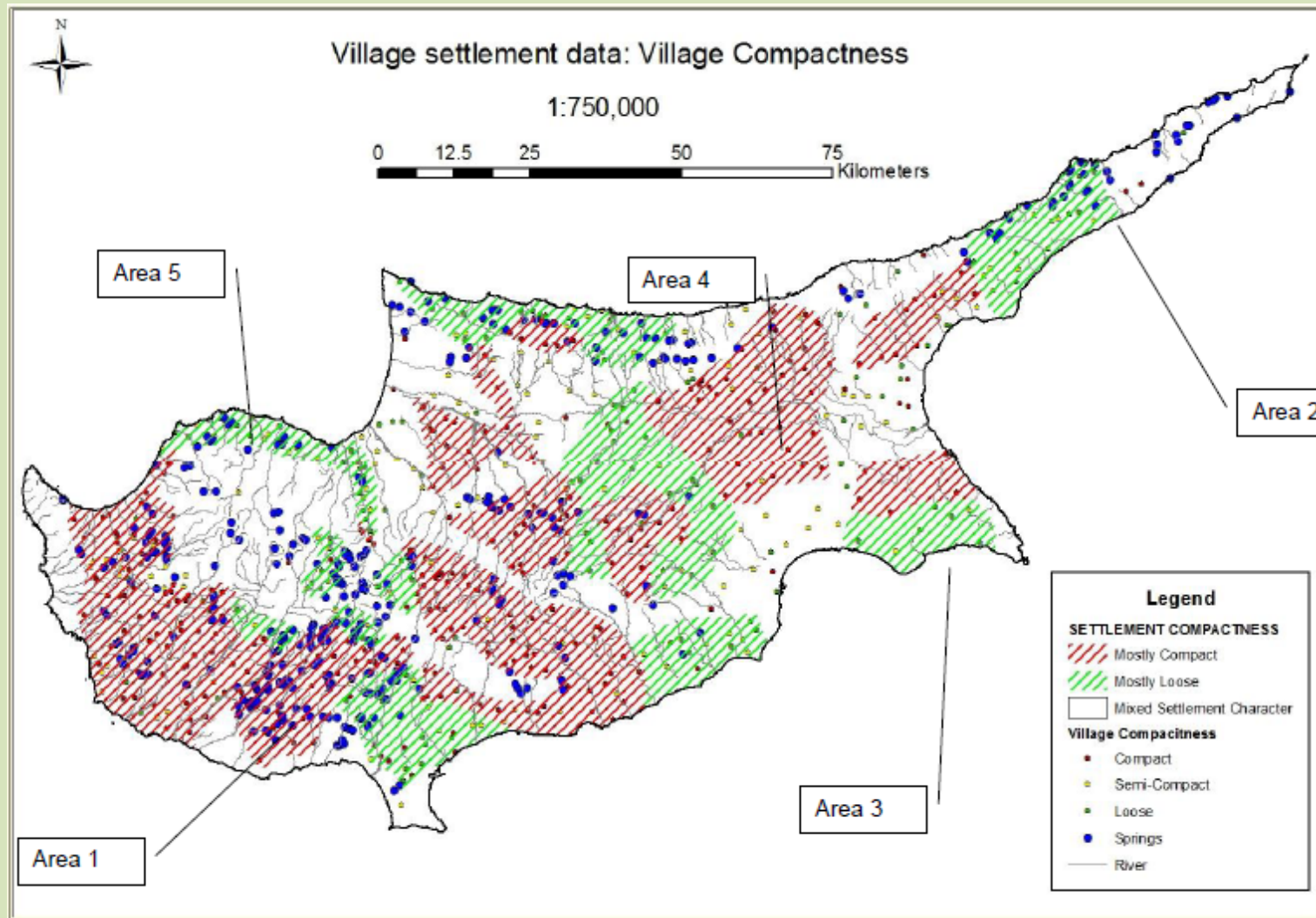
Limassol, June 2011

# Village clusters



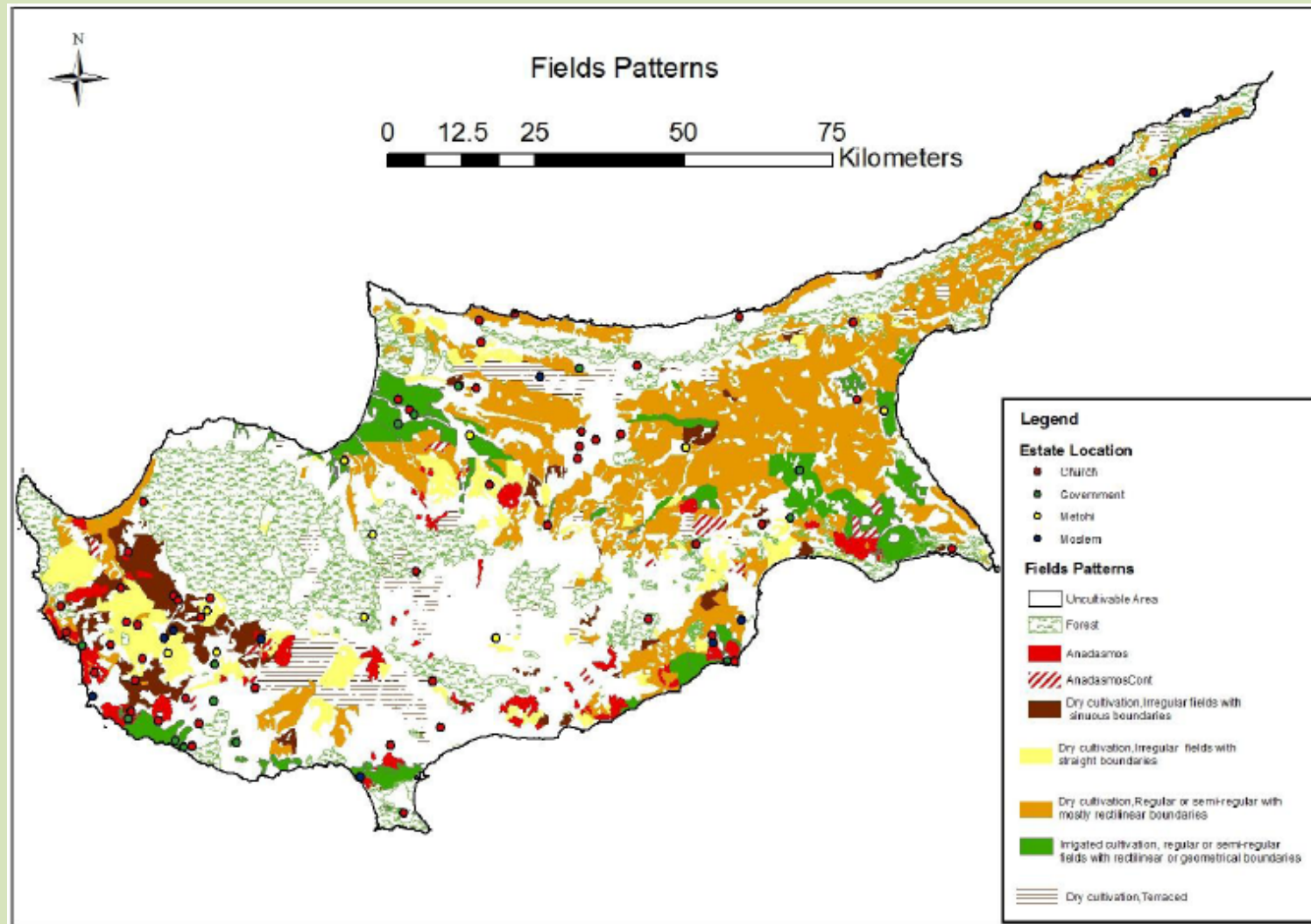
Source: Symons and Vassou, 2011

# Settlement compactness



Source: Symons and Vassou, 2011

# Agricultural field patterns



Source: Symons and Vassou, 2011

# Field pattern regularity (1/2)

Irrigated fields, regular or semi-regular, rectilinear or geometric



*Phassouri*

*Morphou*

*Kissonerga*

Dry cultivation, regular or semi-regular, rectilinear



*Astromentis*

*Mesaoria*

*Paralimni*

**Dry cultivation, irregular but with straight boundaries (geometric)**



*Mouth of Kourris river*

*Potima Bay*

*Polemi*

**Dry cultivation, irregular, sinuous boundaries**



*Akamas: abandonment obscuring pattern*

*Amargeti*

*Polemi*

**Dry cultivation, terraced fields**

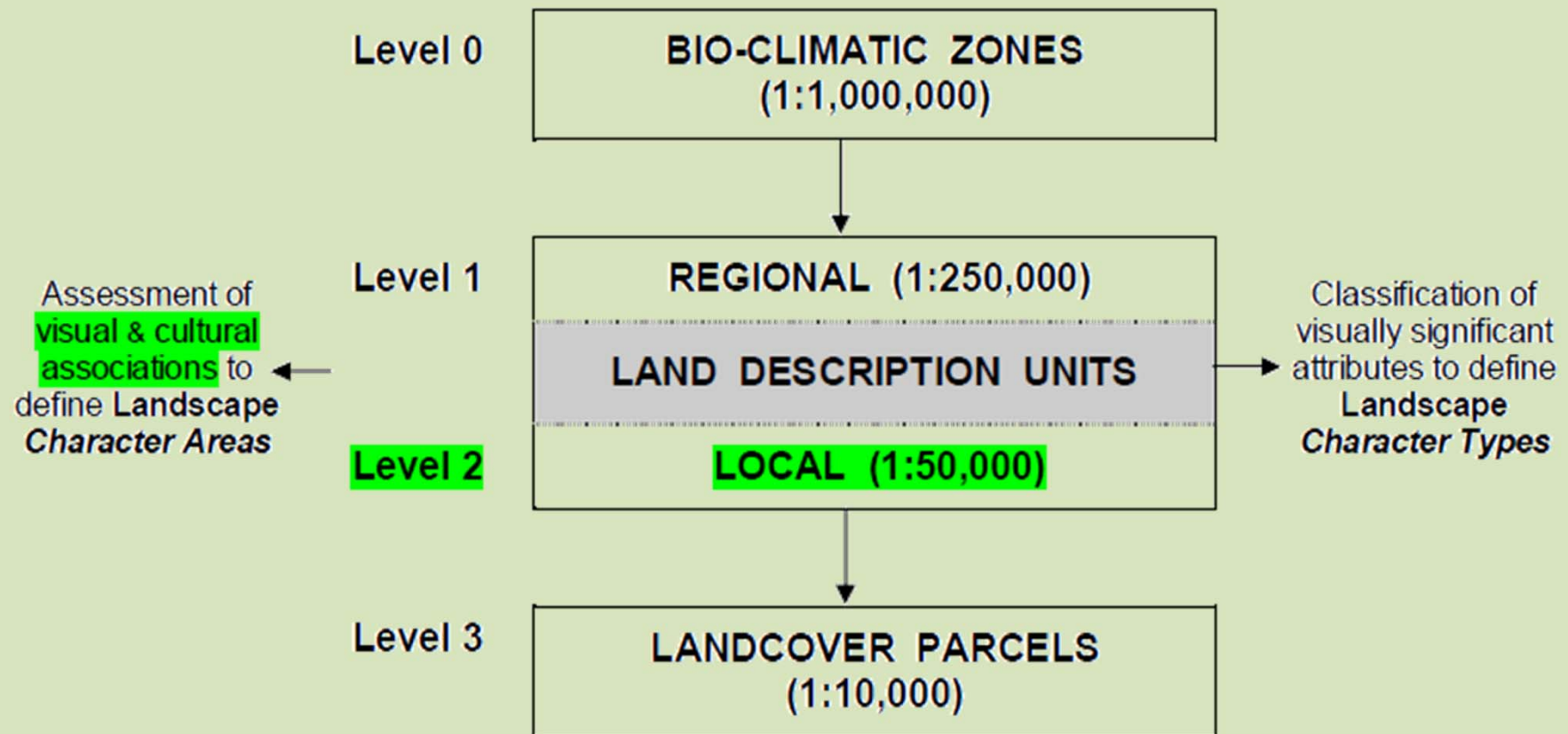


*Wide terraces, Stoumbi*

*Narrow terraces, Pochna*

*Lofou*

# Second level landscape mapping



# What next?

- Processing of first level maps to produce a second level cartographic base (scale 1:50,000) with the introduction of cultural landscape data and the integration of all map layers
- Field verification of integrated cartographic base by NGO experts and university students with data provision on built heritage typologies from the DTPH
- Compilation of comments and feedback on draft second level map from all concerned stakeholders with coordination of awareness raising activities and debates from the DTPH
- Dissemination activities for the presentation and publication of the final second level map



# Landscape Character Assessment as a tool for conservation in the East Mediterranean

CYPRUS

Laona Foundation for the Conservation and Regeneration of the Cypriot Countryside



Open University Cyprus



Associate:  
*Department of Town Planning and Housing*

JORDAN

Royal Society for the Conservation of Nature



German Jordanian University



LEBANON

Society for the Protection of Nature in Lebanon



American University of Beirut



GREECE

Mediterranean Institute for Nature and Anthropos



University of the Aegean



# Project's main outputs (1/2)

- Field verification of a best-practice methodology for LCA and landscape character mapping in the Eastern Mediterranean
- LCA training programme to produce local experts
- Landscape character maps at 1:50,000 with cultural, ecological and physiographic patterns – cover the whole of Cyprus as well as pilot areas in Lebanon, Jordan and Greece
- Risk assessment tool based on algorithm conceptual models of spatial data regarding landscape value, risk severity etc.
- Decision support system and manual for planning and conservation decision makers, tested through workshop

# Project's main outputs (2/2)

- Innovative participative process from early mid-eastern traditions of the commons (“hima”), adapted to a contemporary context, with pilot applications in all countries
- Preparation, testing, evaluation and dissemination of a tertiary level training package
- Capitalisation activities to ensure the long lasting sustainability of the project, including dissemination and outreach, networking, integration of landscape character assessment into national policies and setting up of permanent structures – the **East Mediterranean Landscape Observatory** and the **Informal Landscape Network**

[penotiades@tph.moi.gov.cy](mailto:penotiades@tph.moi.gov.cy)





THANK YOU!