

## ELC presentation

Including  
landscape in long-  
term spatial  
planning

**Johan Bergkvist**

Landscape architect / AgrL  
National coordinator for  
cultural heritage

## EARLY PICTURE OF THE WHOLE

Including landscape in long-term spatial planning



**TRAFIKVERKET**  
SWEDISH TRANSPORT ADMINISTRATION



## We are contributing to the development of society

Everyone arrives smoothly, the green and safe way. This is the Swedish Transport Administration's vision. A vision which means that we will create the conditions for a robust and efficient transport system which is both energy-efficient and safe. At the same time, we must ensure that road-users and hauliers have excellent opportunities to carry out their journeys and transportation.

The Swedish Transport Administration is responsible for the overall long-term infrastructure planning of road, rail, sea and air transport. Our assignment also includes the construction, operation and maintenance of state roads and railways. We are developers of society and we plan ahead for a holistic integration of the entire transport system. In order for society to develop, the country's transportation must work. Increased accessibility is becoming increasingly important.

Our assignment means that on a day to day basis, we must ensure that the roads and railway tracks are passable, that we have more roads with median barriers, that railway stations are adapted to the disabled, that combined terminals are developed, that travellers and road users receive speedy and relevant traffic information, that driving tests for driving licences are carried out and that everything else required is carried out to manage and develop a smart infrastructure.

The objective is an accessible and safe transportation system that takes account of the environment and people's health. To achieve this objective, we need to work closely with the rest of society. Together, we can make life easier for the whole of Sweden.

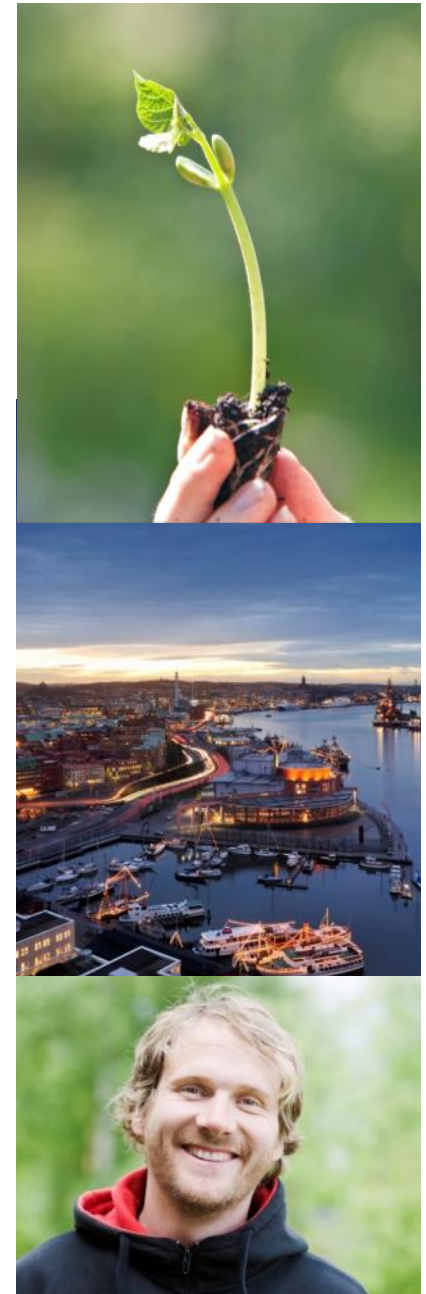


**GUNNAR MALM**  
Director General  
The Swedish Transport  
Administration

# Vision

## Everybody arrives smoothly, the green and safe way

- Climate-smart transport
- A living landscape and attractive built-up areas
- Prerequisites for good health

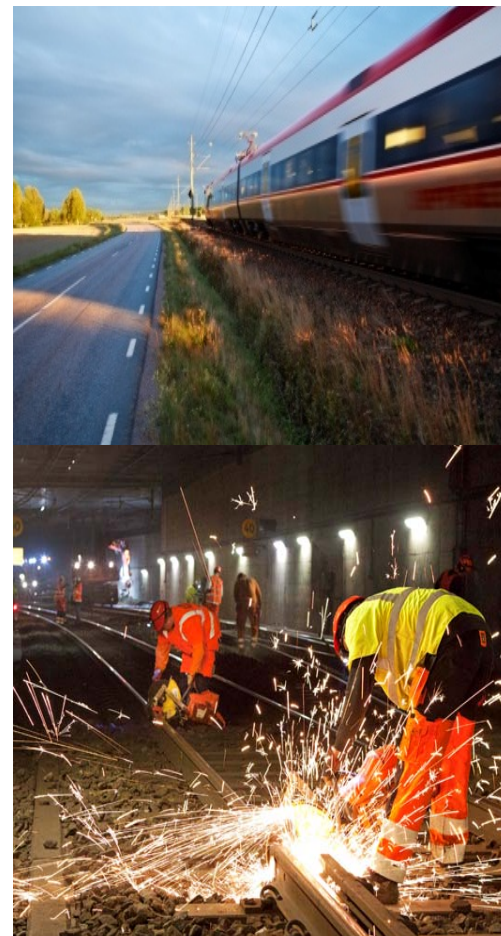


# Government assignment



# A faster route to make plans for roads and railways

- More efficient planning
- Maintained quality
- Shorter lead times
- Improved collaboration



# ELC implementation in Sweden



## European Landscape Convention

The convention, which was adopted in Sweden in 2011, influences all Swedish authorities that in any way partake in community planning. The landscape as a whole has obtained stronger status, and those who use and live in the landscape have gained more say in the planning process.

