

An aerial photograph of a rural landscape featuring rolling hills and fields. The terrain is a mix of green, brown, and tan, suggesting different agricultural uses or natural vegetation. The hills are interconnected by a network of roads and paths. The lighting creates long shadows, indicating a low sun position. The overall scene is a typical representation of a rural landscape.

# The National Observatory of Rural Landscape

Prof. Mauro Agnoletti  
Ministry for Agriculture, Food and Forest Policies  
Working Group Landscape

Working Group landscape  
Italian Ministry for Agriculture, Food and Forestry  
National Plan for Rural Development 2007-13

## **The National Observatory for Rural Landscape**

- a. Development of planning and management strategies
- b. Definition of landscapes types
- c. National register of historical rural landscapes
- d. Landscape monitoring
- e. Definition of landscape quality objectives
- f. Development of international collaborations
- g. Landscape prize
- h. Landscape certification

National Register:

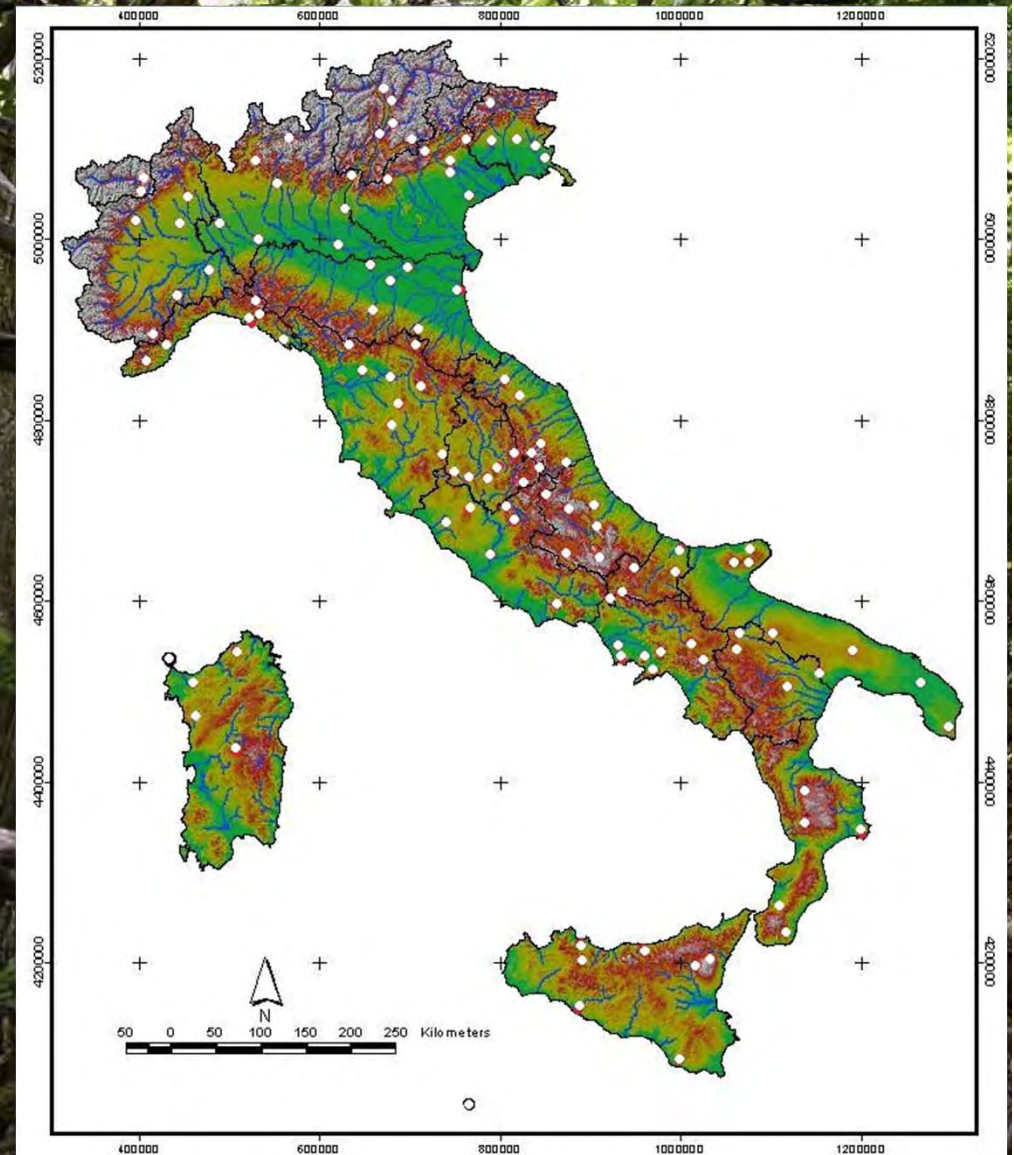
- 14 Universities
- 80 researchers
- 10 Scientific coordinators

126 areas selected

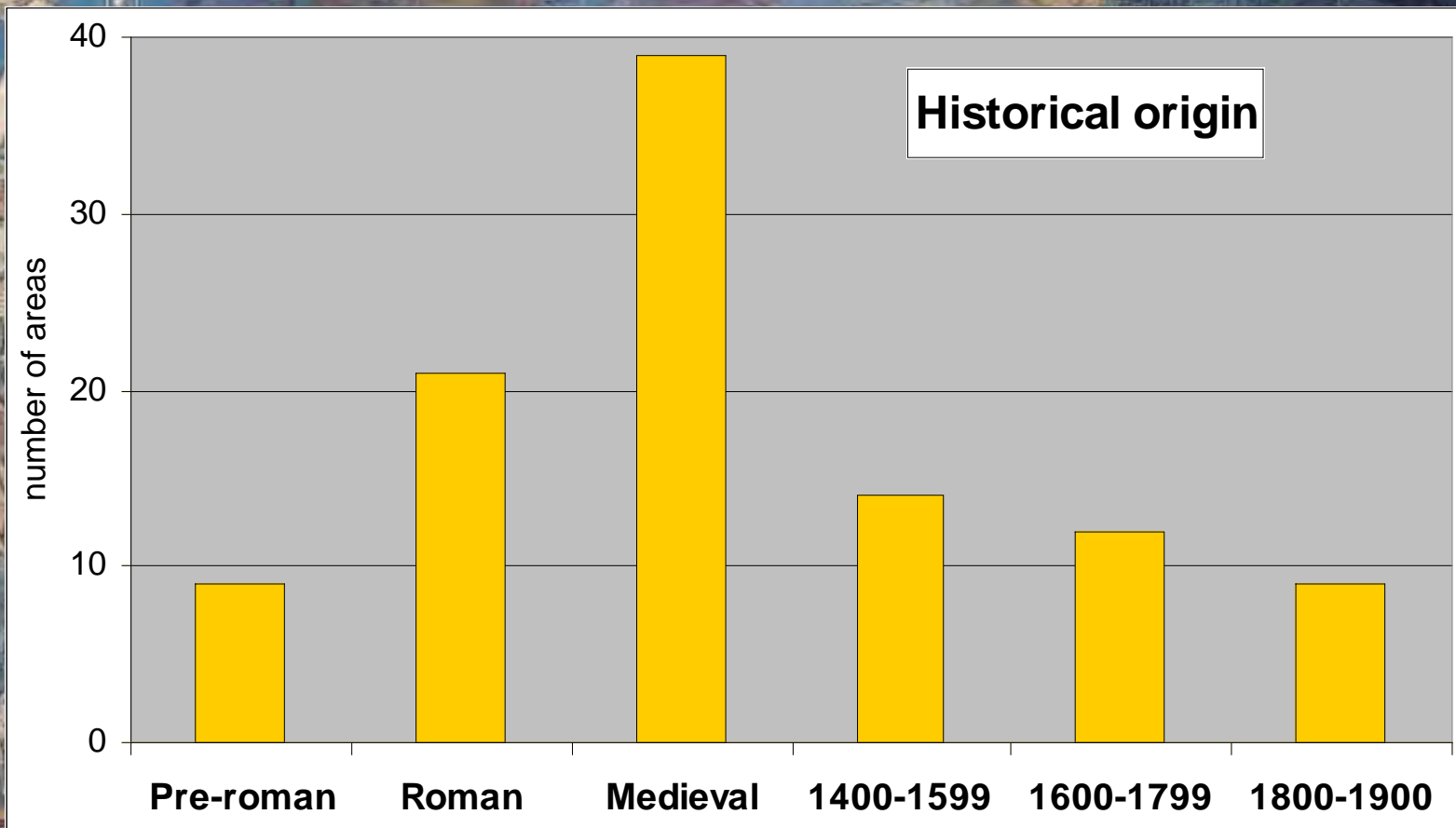
Av. Extension of each area:  
500-2000 ha

Selection criteria:

- Significance
- Integrity
- Vulnerability

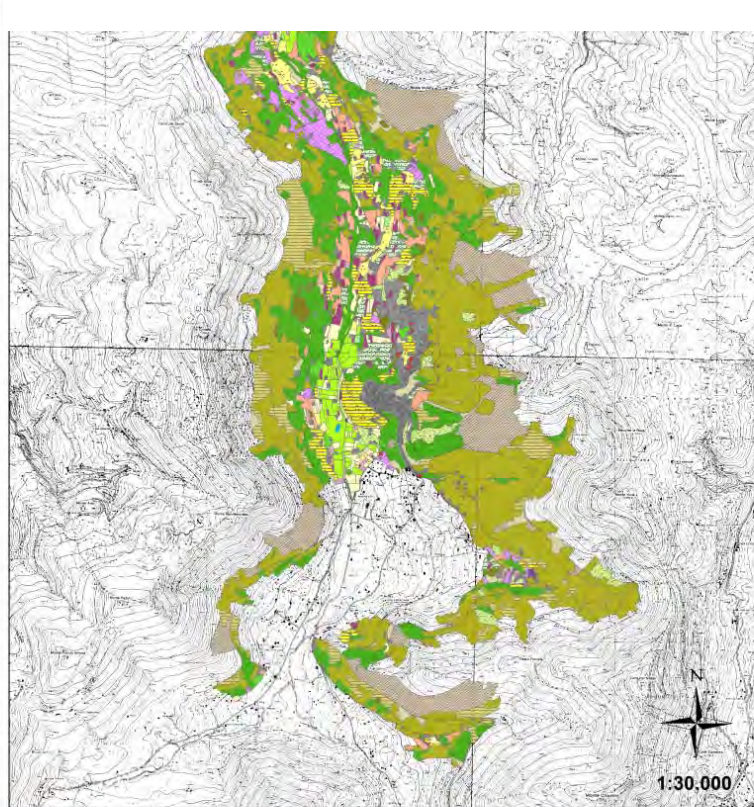


Historical origin



# Maps

## Terraced olive orchards – Vallecorsa



**Legenda**

|                                 |                                |                                 |
|---------------------------------|--------------------------------|---------------------------------|
| acque superficiali              | orti                           | seminativo con olivo terrazzato |
| agglomerati urbani e resedi     | prato                          | seminativo con vite             |
| arbusteto                       | prato arborato                 | seminativo con vite terrazzato  |
| bosco                           | prato arborato terrazzato      | seminativo terrazzato           |
| incolto                         | prato terrazzato               | vigneto                         |
| incolto terrazzato              | seminativo                     | vigneto terrazzato              |
| oliveto                         | seminativo arborato            | vitato olivato                  |
| oliveto terrazzato              | seminativo arborato terrazzato |                                 |
| oliveto terrazzato in abbandono | seminativo con olivo           |                                 |

800 400 0 800 Meters

GESAAF\_ Dipartimento di Gestione dei Sistemi Agrari, Alimentari e Forestali

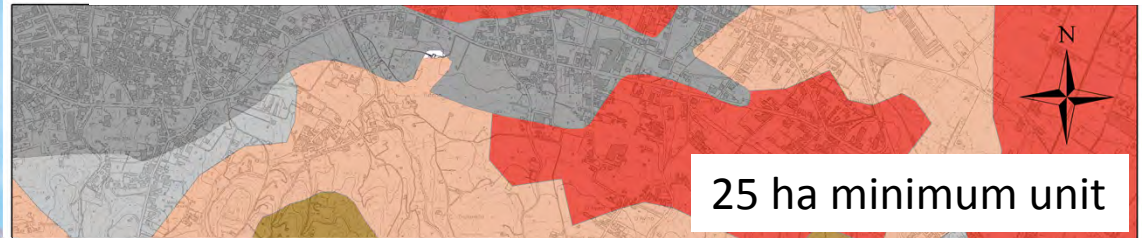
## Data

|  |           |
|--|-----------|
| Total surface area (ha)                          | 1314,16   |
| Number of land uses                              | 25        |
| Number of patches                                | 1161      |
| Average Surface Area of patches (ha)             | 1,13      |
| Average Surface Area of arable land patches (ha) | 1,14      |
| Hill's Diversity Number                          | 8,98      |
| Edge Density (m/ha)                              | 1012      |
| <b>Landscape Integrity Class (I-VI)</b>          | <b>IV</b> |

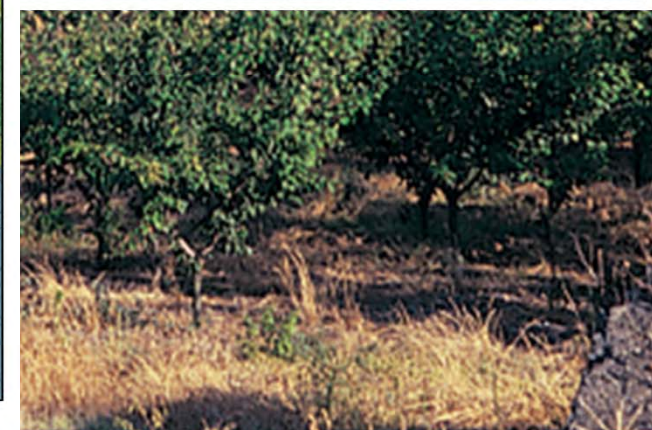
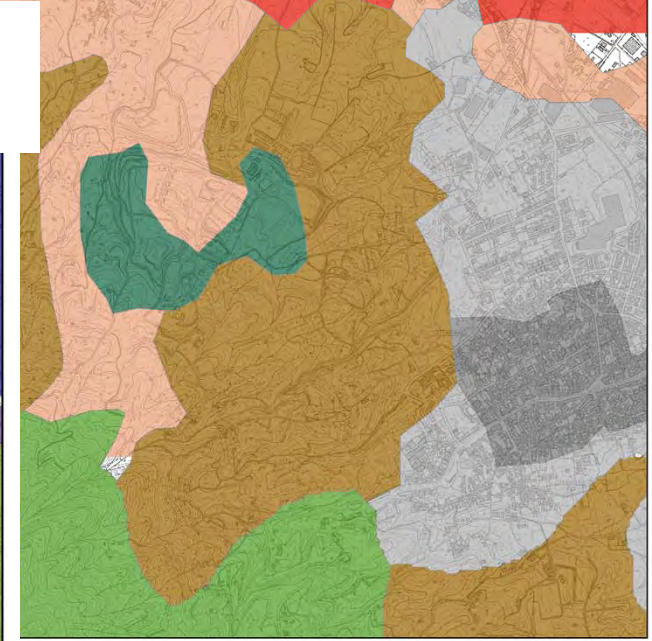
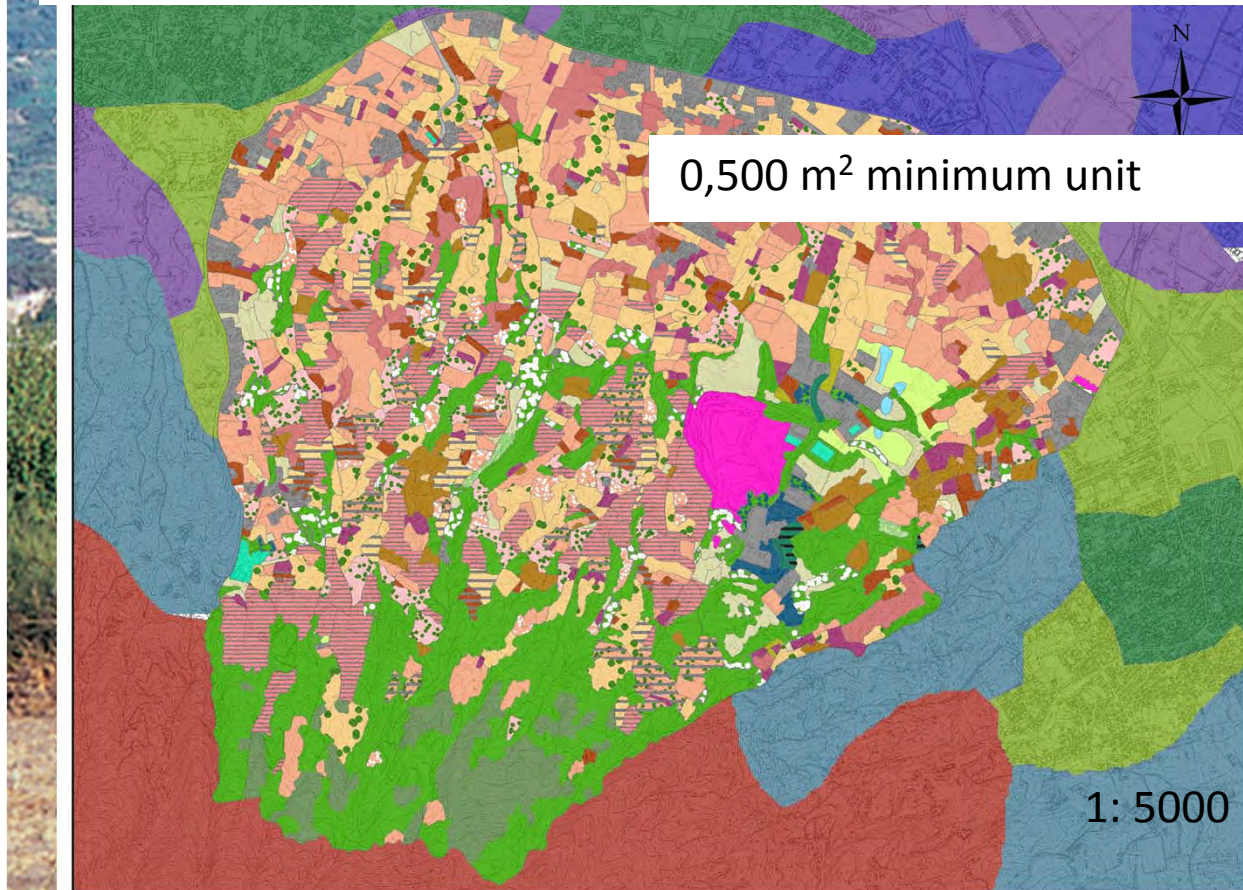


**Building the information: mapping**

**Historical terracings Monte Somma (Naples)**  
EEA - Corine land cover 2006

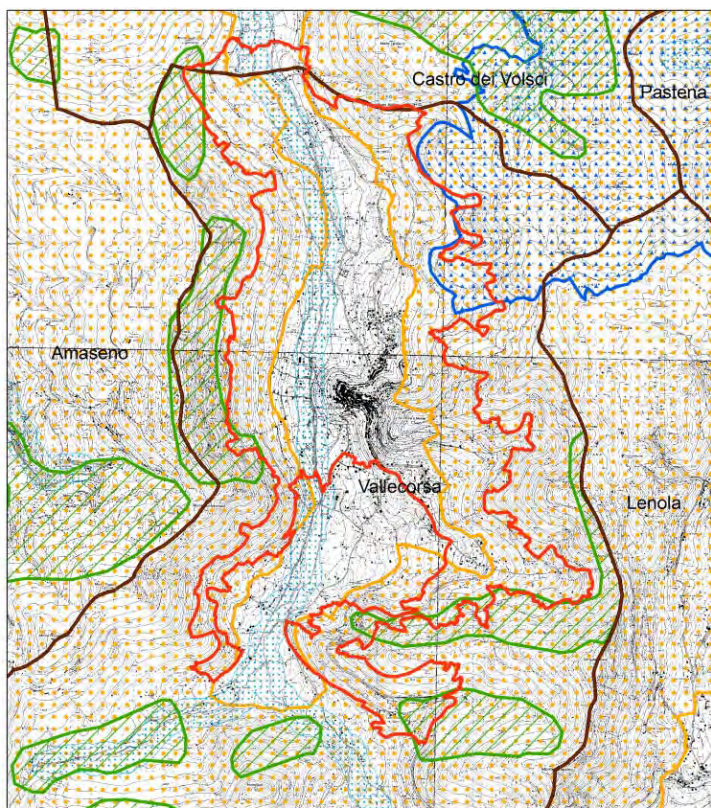


**Historical terracings Monte Somma (Naples)**  
National register of Historical Landscapes 2012



# Restrictions and Administrative boundaries

## Terraced olive orchards - Vallecorsa



### Legenda

- Confini area di studio
- Confini comunali
- Aree boscate ex Legge n.431/85
- Fascia di rispetto (150 m) dai corsi d'acqua ex Legge 431/85, Codice dei Beni culturali e del Paesaggio e s.m.i.
- Sito di Interesse Comunitario di Monte Calvo e Monte Calvilli
- Zona di Protezione Speciale dei Monti Ausoni e Aurunci

890 445 0 890 Meters

GESAAF\_ Dipartimento di Gestione dei Sistemi Agrari, Alimentari e Forestali

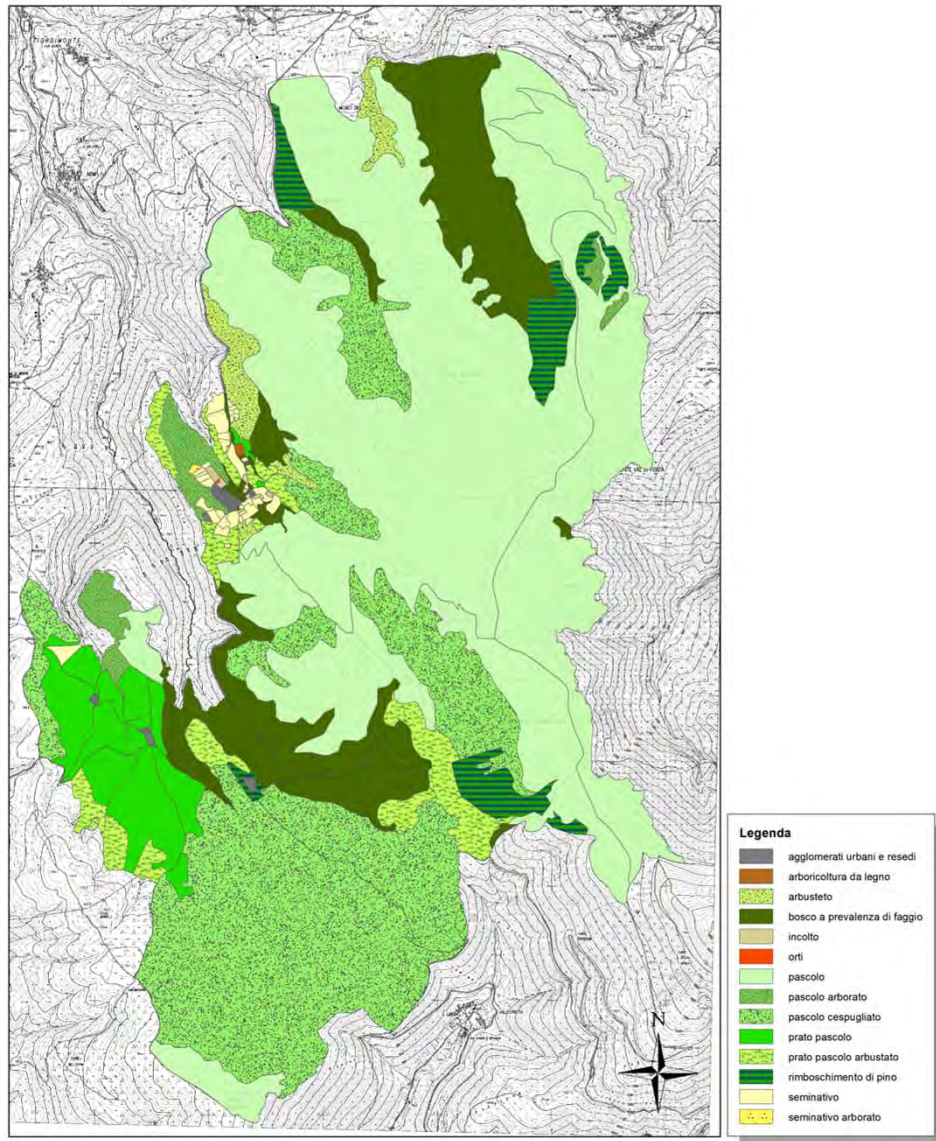


1:30.000

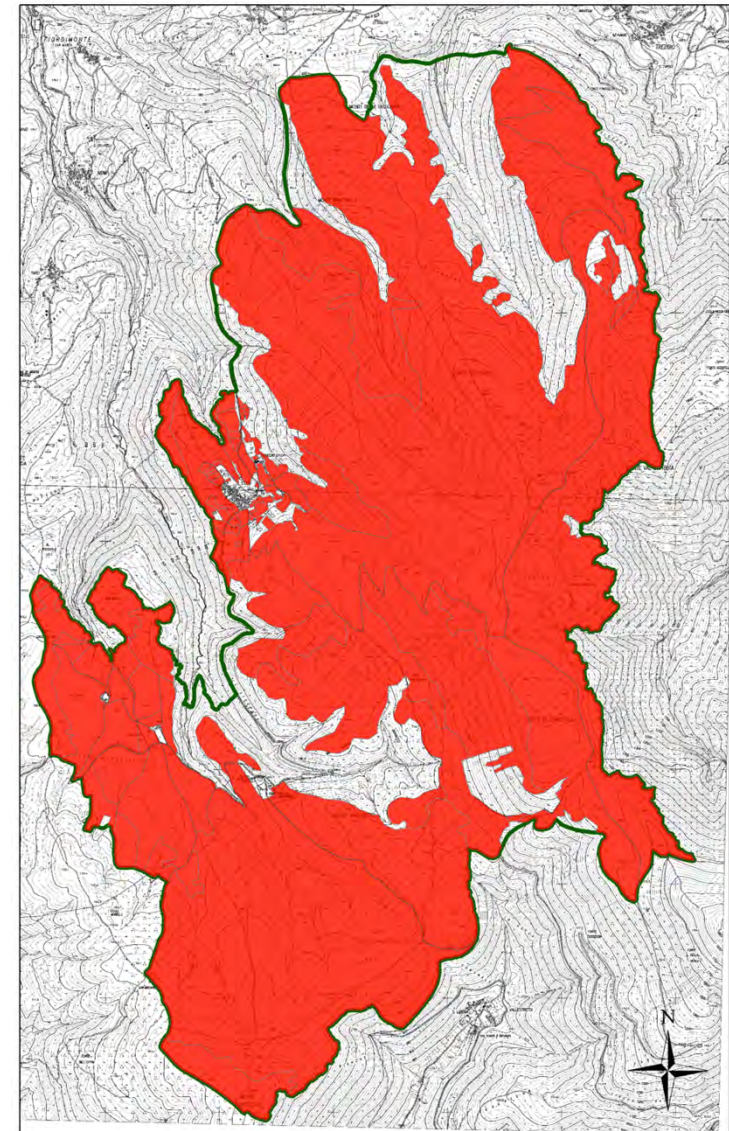
### Existing restrictions:

- **Landscape Restriction** Law 1497/1939;
- **Forest** (Law 431/1985);
- **Water courses** Law 431/'85;
- **Mountain tops** Law 431/'85;
- **Wetlands** Law 431/'85;
- **Volcanos** Law 431/'85;
- **Protected areas:**
- **EU Sites of Community Importance (Habitat);**
- **EU Special Protection Area (Bird) ;**
- **Humid Areas (Ramsar).**

## Macereto Plateau Land use Map



## Macereto Plateau Integrity of Historical Landscape Map







**1977**

Integrity

**2007**

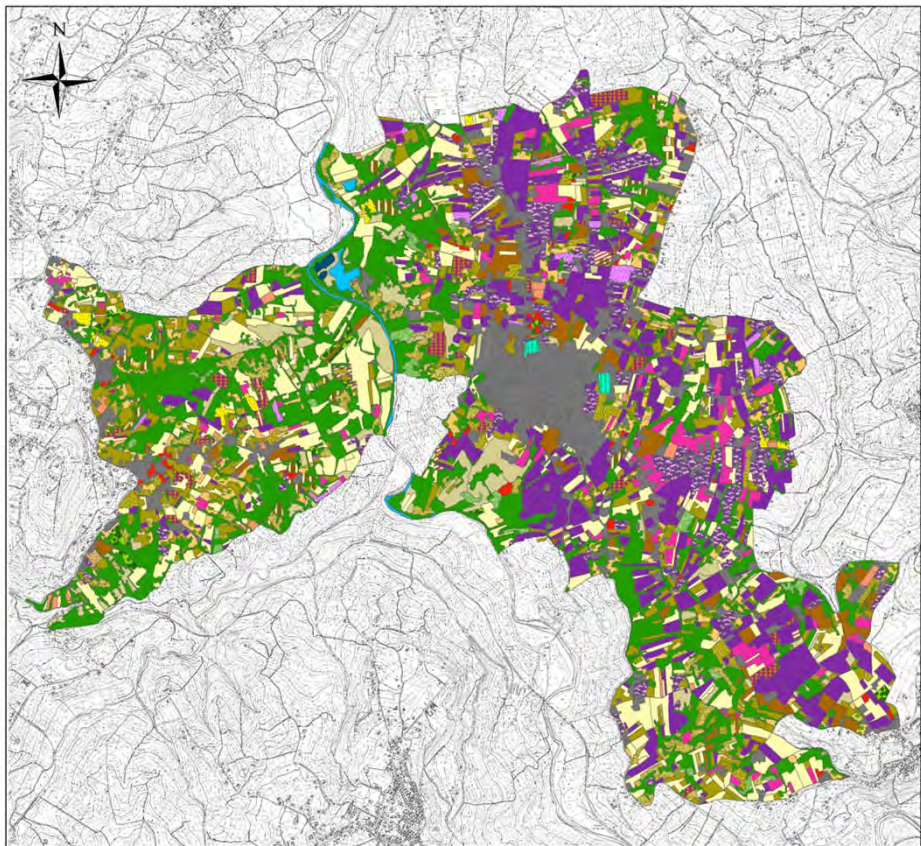


**Castello d'Albola,  
Podere Marangole  
(Chianti senese)**

Accademia dei Georgofili

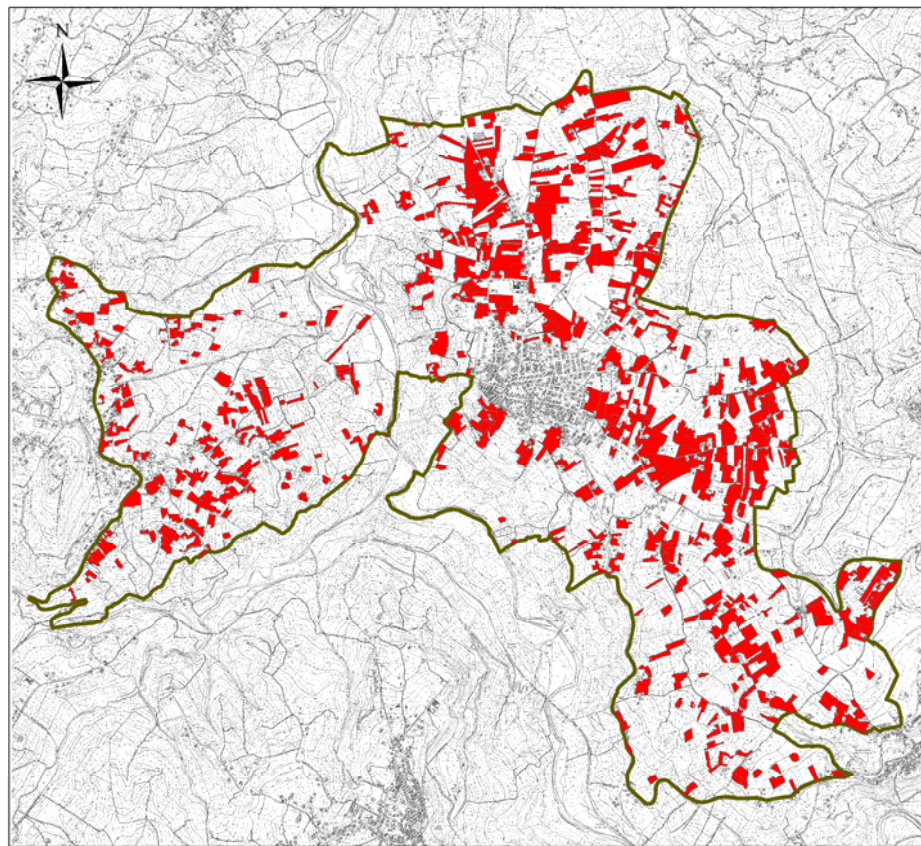
# Mixed hill cultures of lower Irpinia

## Land use Map



# Mixed hill cultures of lower Irpinia

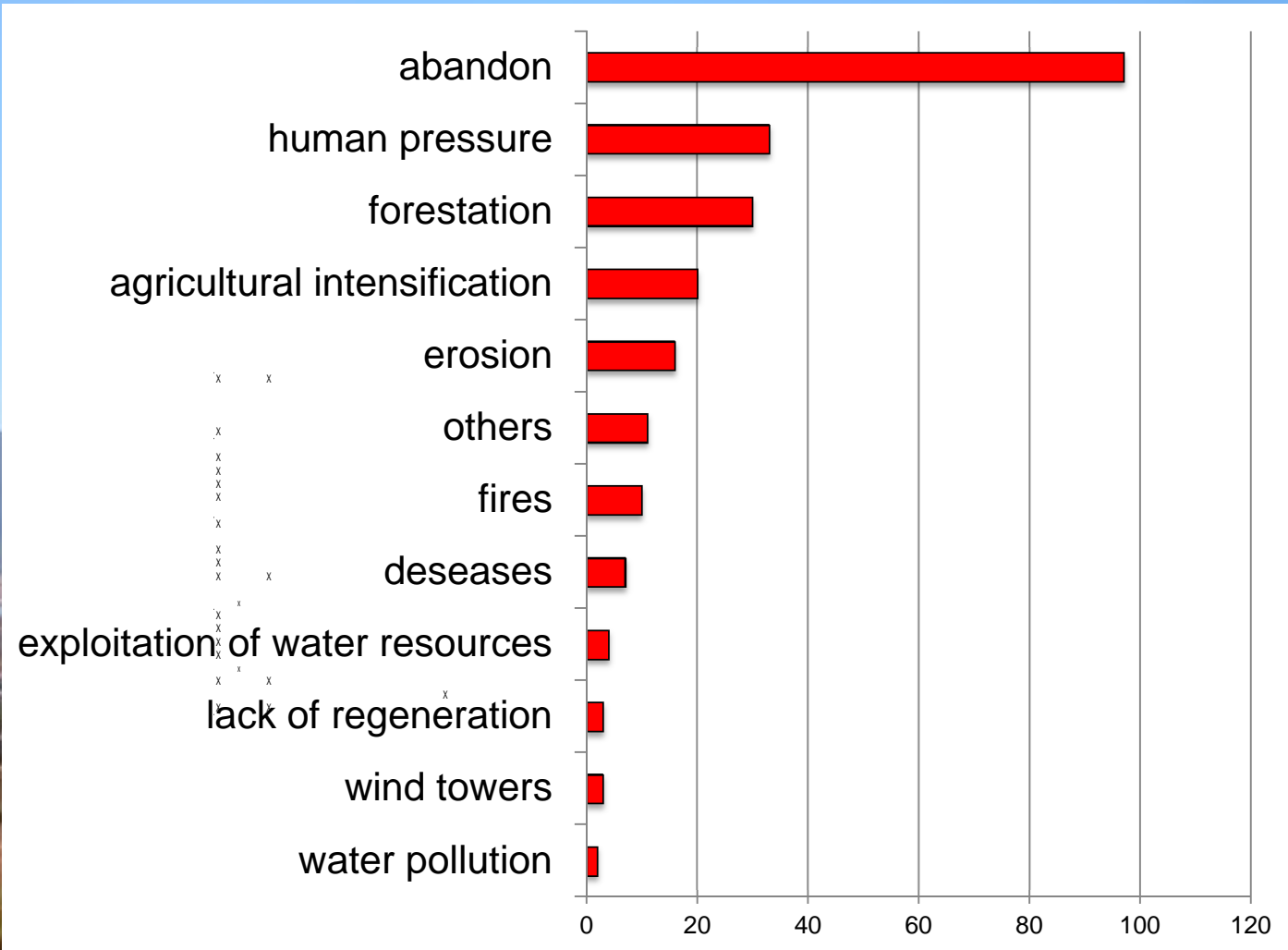
## Integrity of Historical Landscape Map



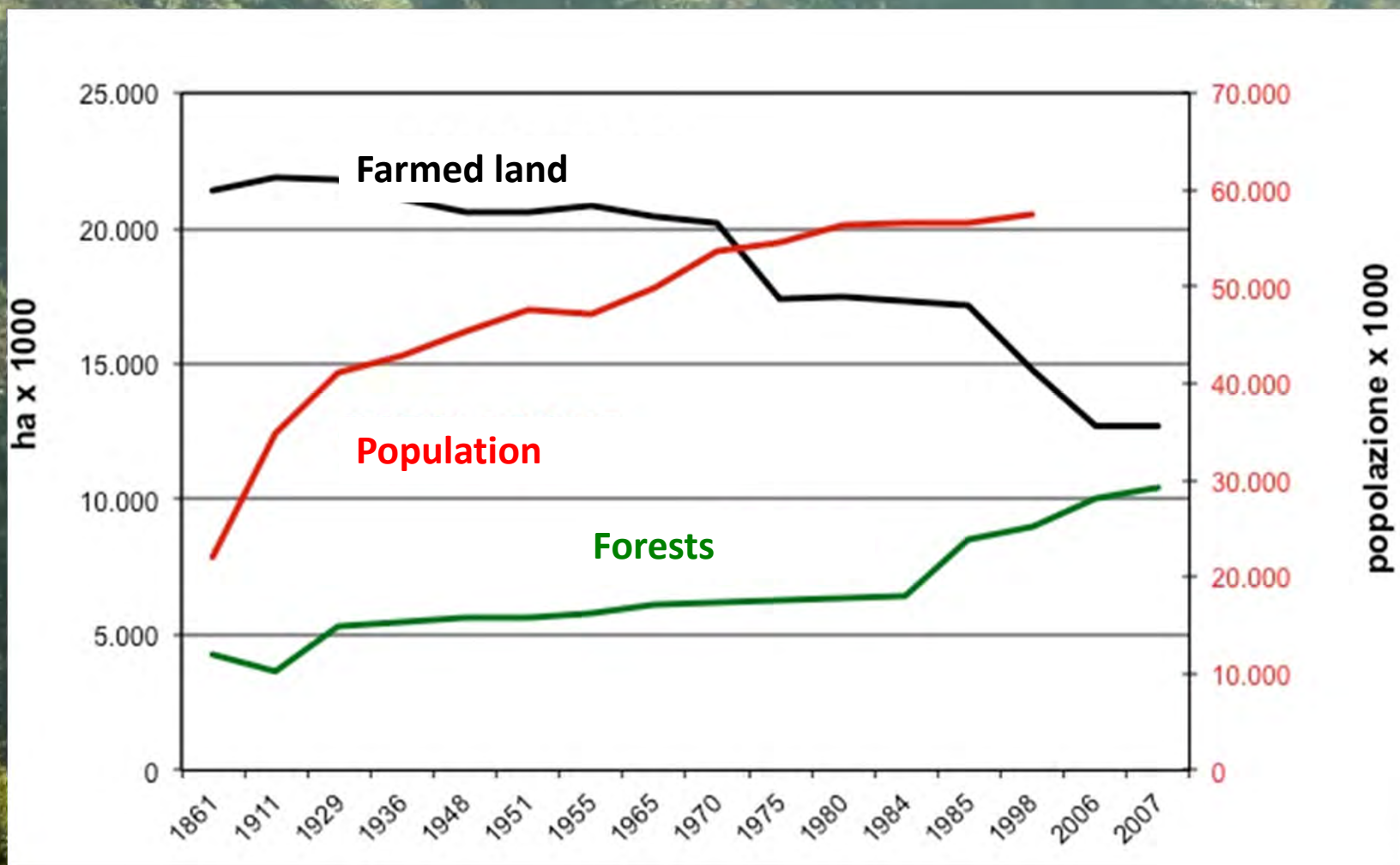
**Legenda**

|                                |                     |                              |                               |
|--------------------------------|---------------------|------------------------------|-------------------------------|
| acque superficiali             | frutteto            | orto                         | vigneto in abbandono          |
| agglomerati urbani e resedi    | impianto sportivo   | pioppeto                     | vigneto tradizionale          |
| altra coltura arborea          | incolto             | seminativo                   | vigneto tradizionale arborato |
| arbusteto                      | incolto arbustato   | seminativo arborato          | vitato olivato                |
| bosco di latifoglie            | oliveto             | seminativo arborato con vite |                               |
| coltura promiscua              | oliveto abbandonato | seminativo con olivo e vite  |                               |
| coltura promiscua in abbandono | oliveto arborato    | vigneto a spalliera          |                               |

# vulnerability



# WOODLANDS-POPULATION-FARMED LAND 1861-2007



- abandonment 1920-2007: 110.00 ha/year
- woodland increase 1920-2007: 68.000 ha/year
- urban sprawl 1990-2006: 8.206 ha/year

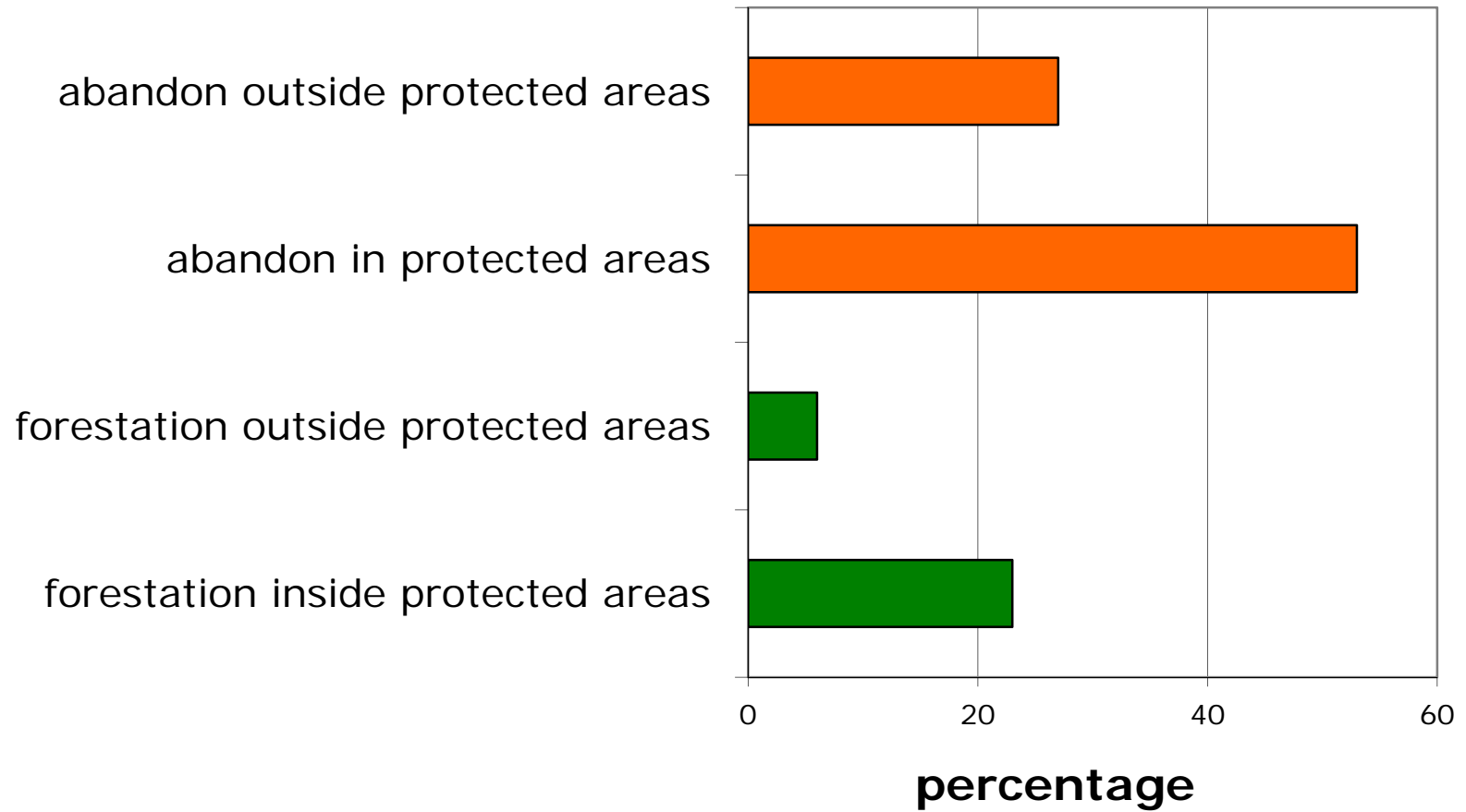
M. FORATO  
m. 1223

1900

Abandon in protected areas  
(Ministry of Environment)

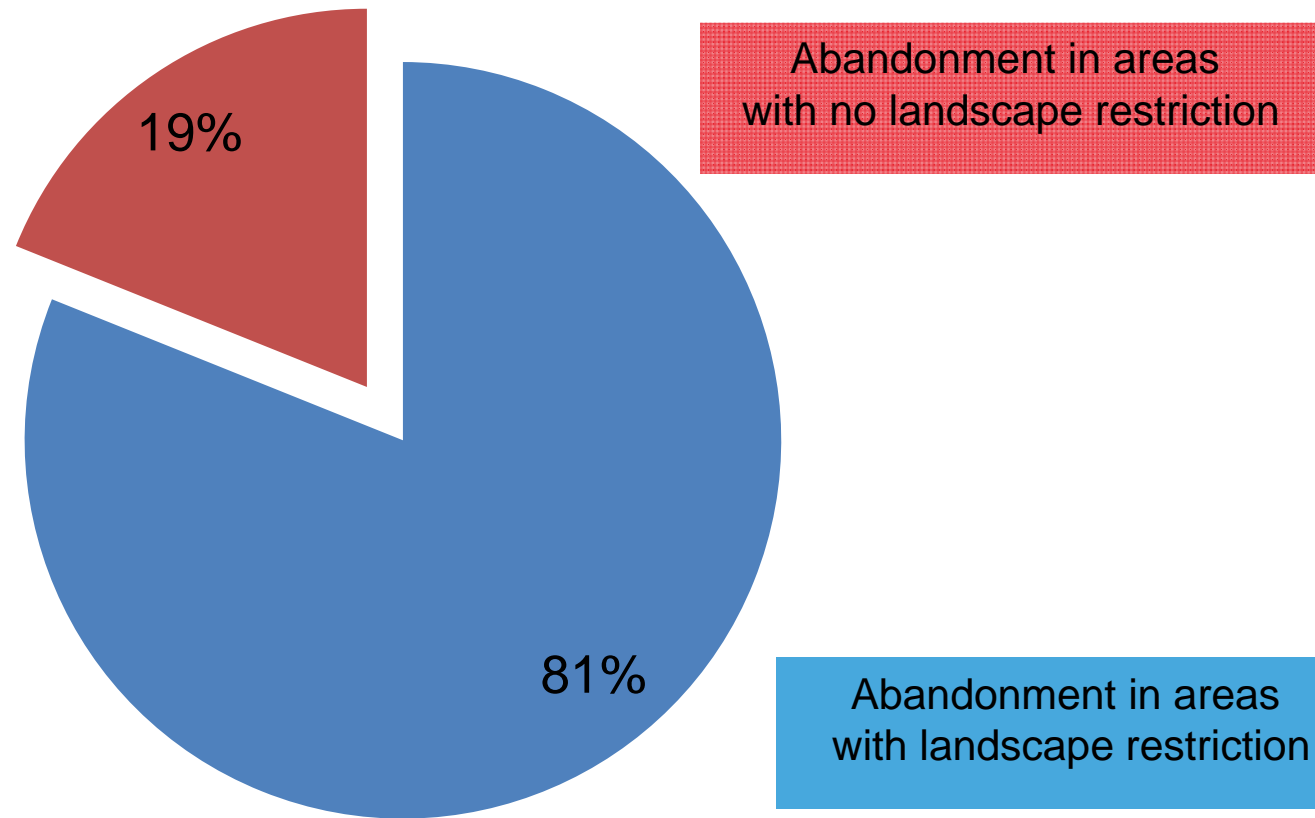
2004

### protected areas



ALPI APUANE - CARDOSO (M. 270)

## Abandon in areas of landscape restriction (Ministry of Culture)



A photograph of a large, ancient tree with a thick, gnarled trunk and sprawling branches. The leaves are in various stages of autumn, showing shades of yellow, orange, and brown. In the background, two cows are grazing in a field. The overall scene is a lush, natural landscape.

There is the need for a different approach to biodiversity considering the integration of humans and nature in the landscape

Bosco di Sant'Antonio – Abruzzo – First Landscape protection 1953



United Nations  
Educational, Scientific and  
Cultural Organization



Convention on  
Biological Diversity



**Linking  
Biological and  
Cultural Diversity**  
UNESCO-SCBD  
Programme

1<sup>st</sup> EU Conference for the implementation of the Joint Program  
Firenze - 9-12 April 2014



## Law allowing landscape restoration (February 2012):

- The removal of a forest grown on an abandoned rural landscape of historical interest (arable, pasture, forest) is authorized.

*The landscape as a priority (Art. 9 Italian Constitution)*



A photograph of a chestnut forest. The trees have thick, gnarled trunks and dense green foliage. The lighting is bright, suggesting a sunny day. The text is overlaid on a semi-transparent green box in the upper center.

The Moscheta Landscape Park – Tuscany  
(Regional Public Property)  
Restoration of Historical Chestnut Orchards

Winner of the prize “ideal City”







**The restoration of the San Francis property in Assisi**

Italian Trust for the Environment (FAI)

















The Lamole terraced wine landscape



A high-angle photograph of a coastal town built on a cliffside. The town is composed of numerous small, colorful buildings with red and white facades, clustered together on a rocky outcrop. To the left of the town, a steep hillside is covered in terraced vineyards, with rows of green grapevines and dirt paths winding across the slope. The sea is a deep blue, extending to the horizon. The sky is clear and bright. The text "Thank-you" is overlaid in white on the right side of the image.

Thank-you

Agnoletti *Ed.*

Mauro Agnoletti *Editor*



The Italian Historical Rural Landscape

# The Italian Historical Rural Landscape

Cultural Values for the Environment  
and Rural Development

 Springer