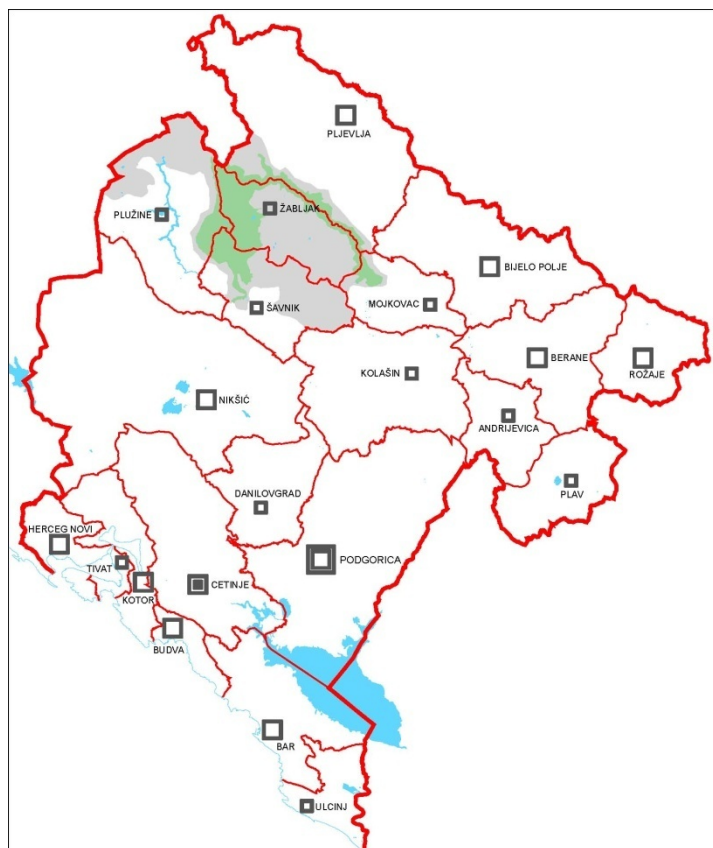


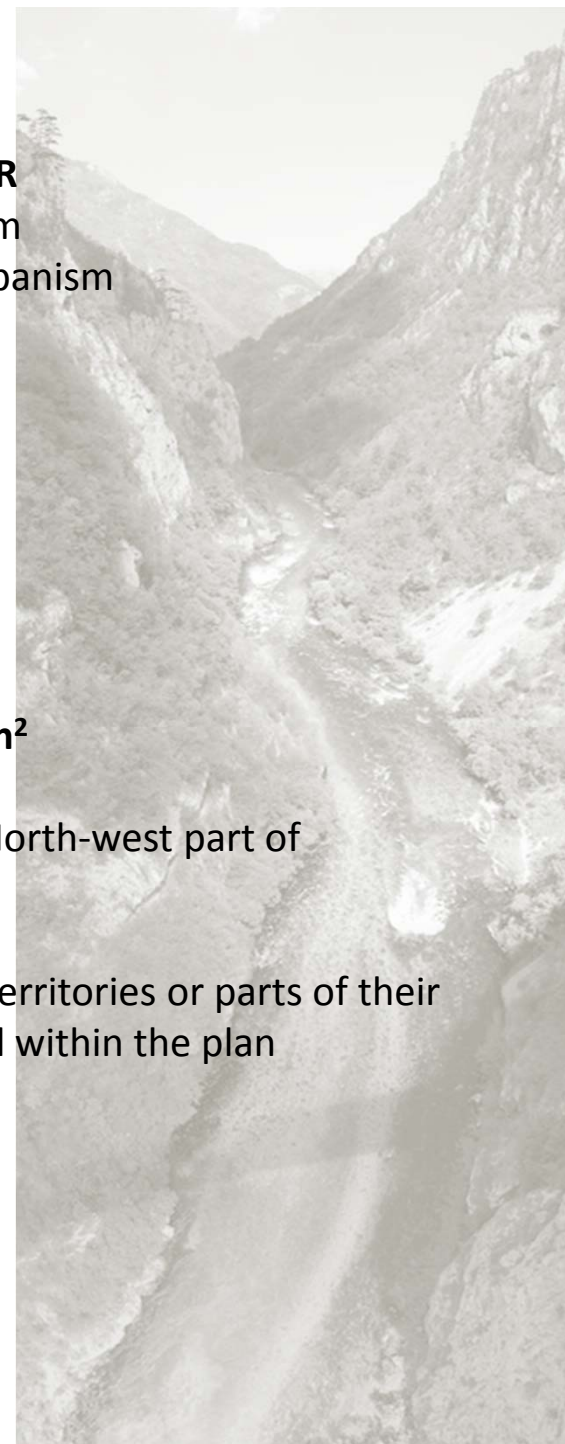
PROTECTION AND LANDSCAPE PLANNING WITHIN SPECIAL PURPOSE SPATIAL PLAN MT.DURMITOR



Plan Name: **SPECIAL PURPOSE SPATIAL PLAN MT. DURMITOR**
Client : Ministry of Sustainable Development and Tourism
Plan Developer: IBI GROUP / CAU Centre for Architecture and Urbanism



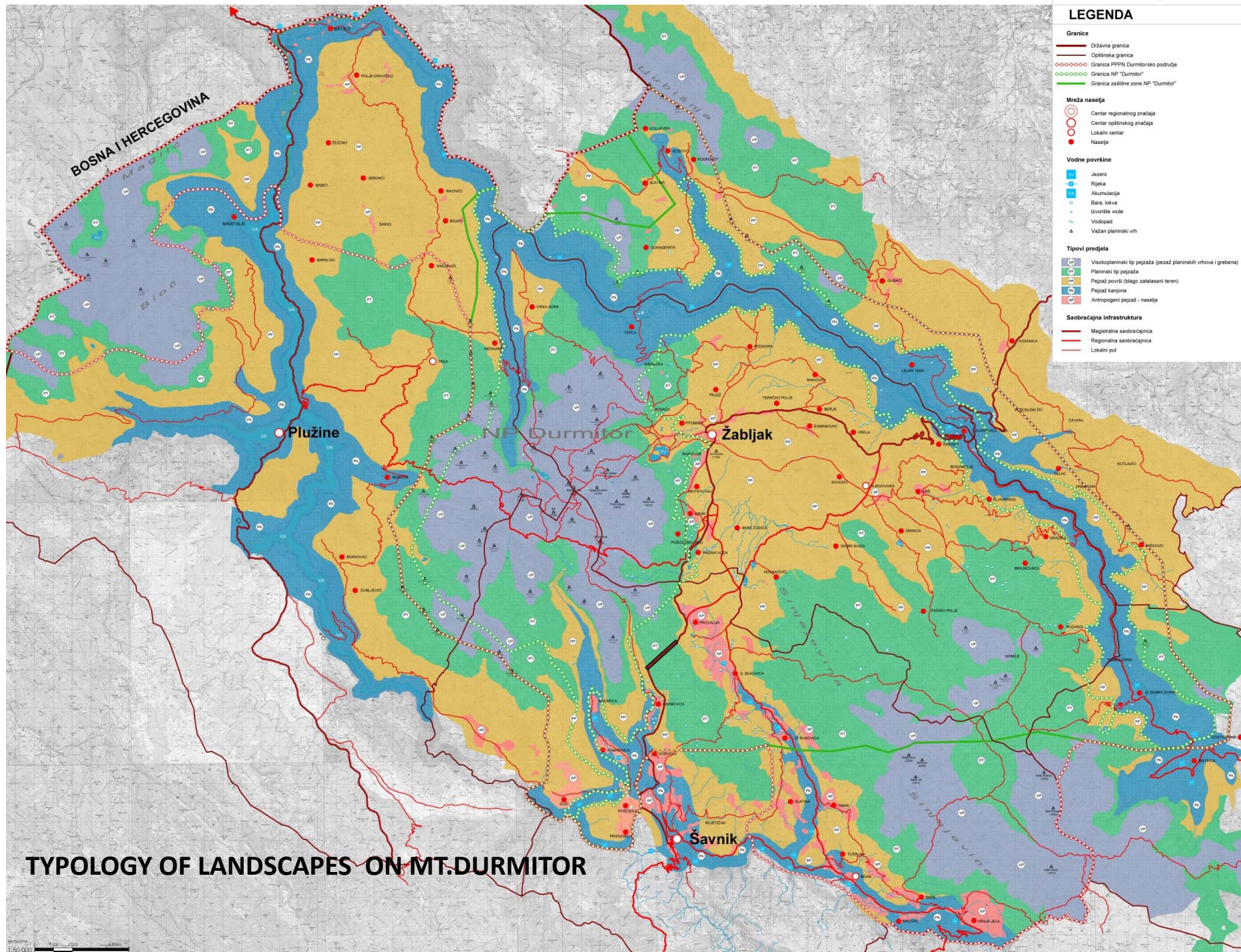
- SPSP area : **1314.55 km²**
- Geographic position: North-west part of Montenegro
- Municipalities whose territories or parts of their territories are included within the plan boundaries :
 - Žabljak
 - Pljevlja
 - Plužine
 - Šavnik
 - Mojkovac



NATURE OF MT. DURMITOR

Plan boundaries include mountain massifs, plains, canyon valleys, many hydrological, geo-morphological, geological, speleological and other phenomena, a very rich wildlife and biodiversity in general, with large number of endemic, rare, relic, protected and in any other way important and useful species.





HIGH MOUNTAINS LANDSCAPE



MOUNTAINOUS LANDSCAPE



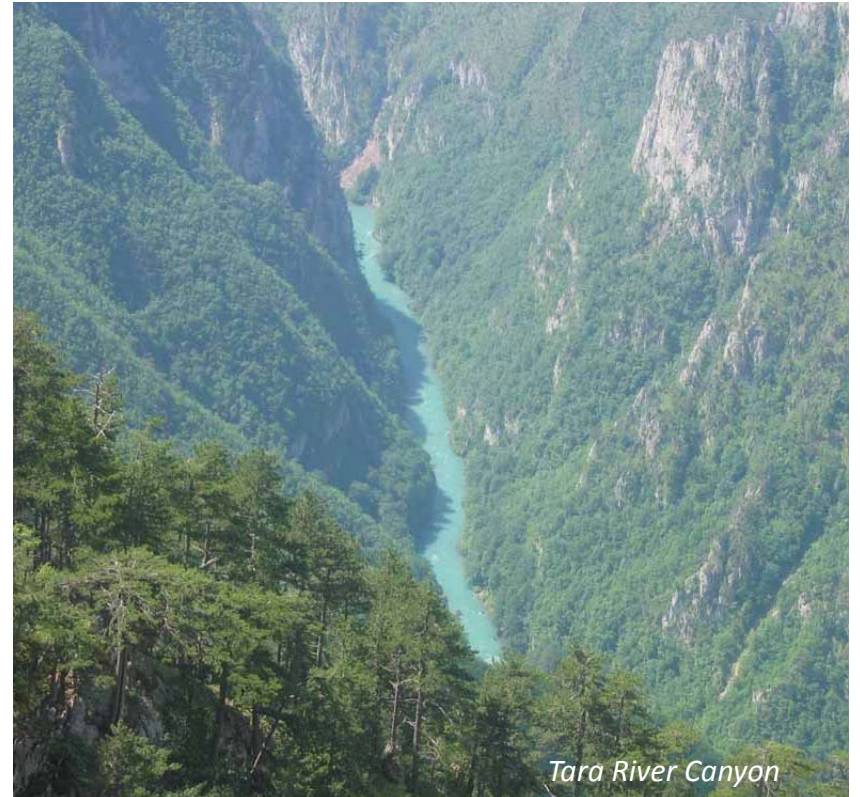
MOUNTAIN PLAINS LANDSCAPE



CANYON LANDSCAPE



Sušice River Canyon



ANTHROPOGENIC LANDSCAPE – URBAN SETTLEMENTS



ANTHROPOGENIC LANDSCAPE – PSEUDO-URBAN SETTLEMENTS



**ANTHROPOGENIC LANDSCAPE –
RURAL SETTLEMENTS AND KATUNS**





Hydrographic structures – 18 glacial lake





Škrčko jezero



Zabojsko jezero



Vražije jezero

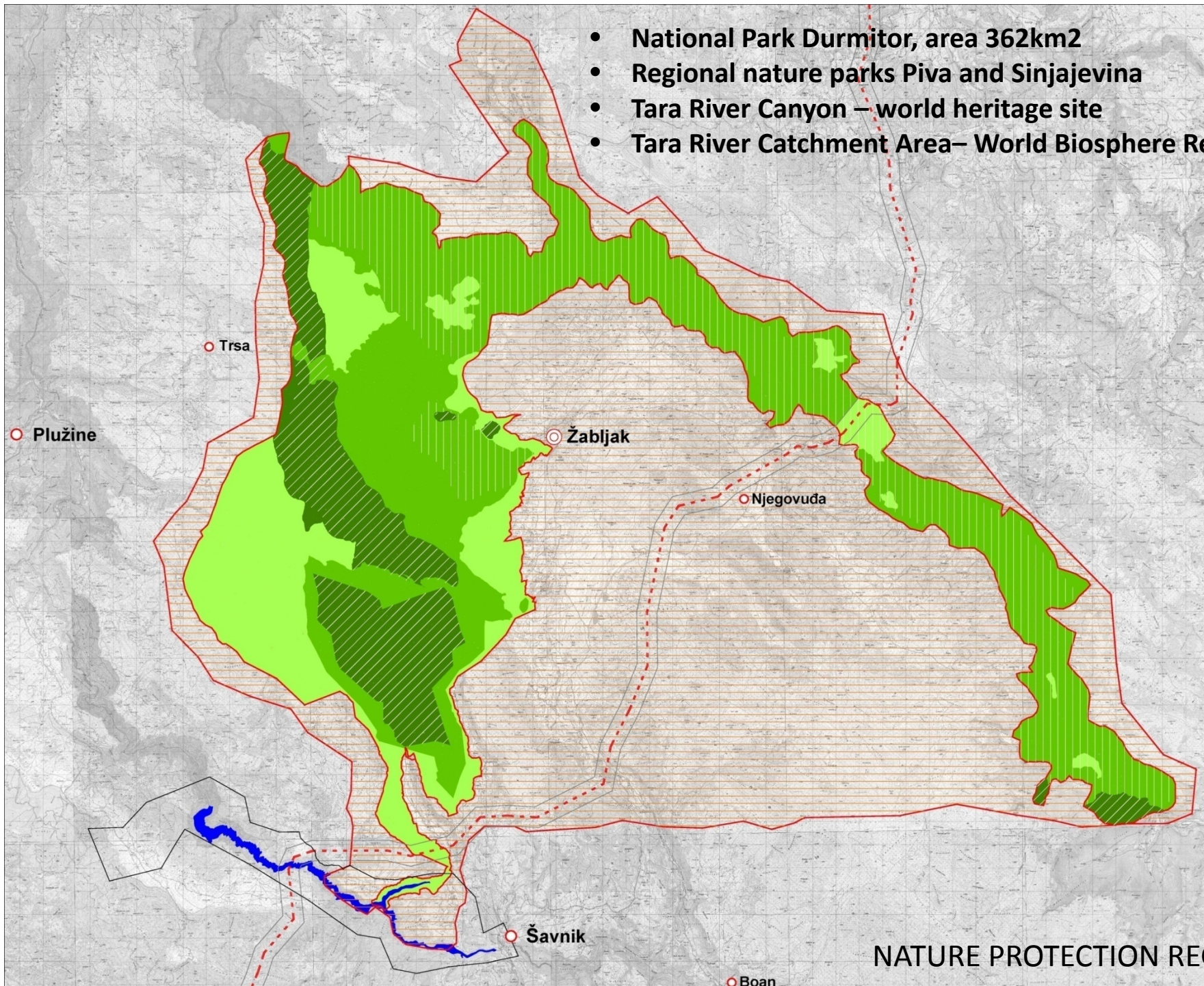


Jablan jezero

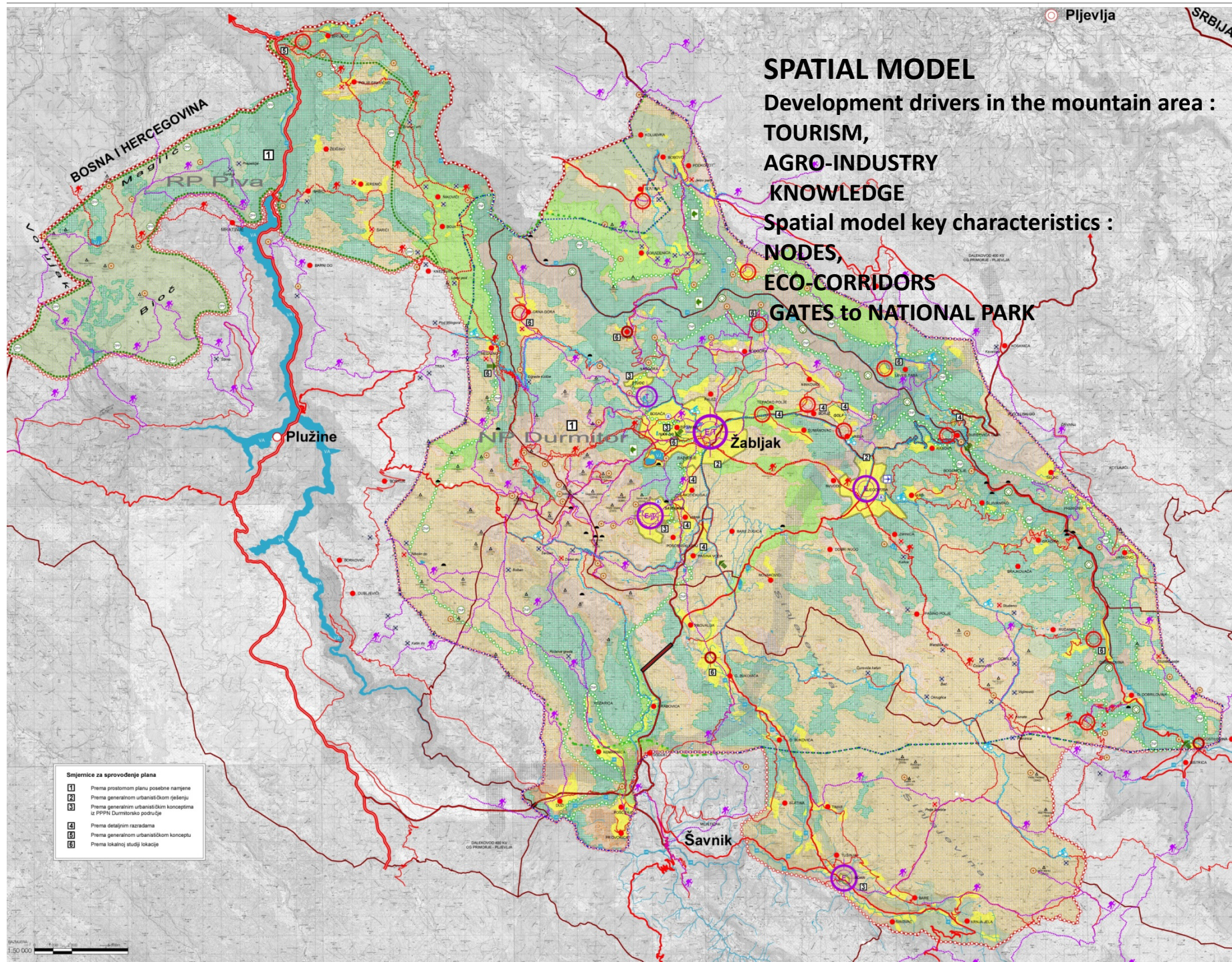


Trnovačko jezero

- National Park Durmitor, area 362km²
- Regional nature parks Piva and Sinjajevina
- Tara River Canyon – world heritage site
- Tara River Catchment Area– World Biosphere Reservoirs



NATURE PROTECTION REGIMES

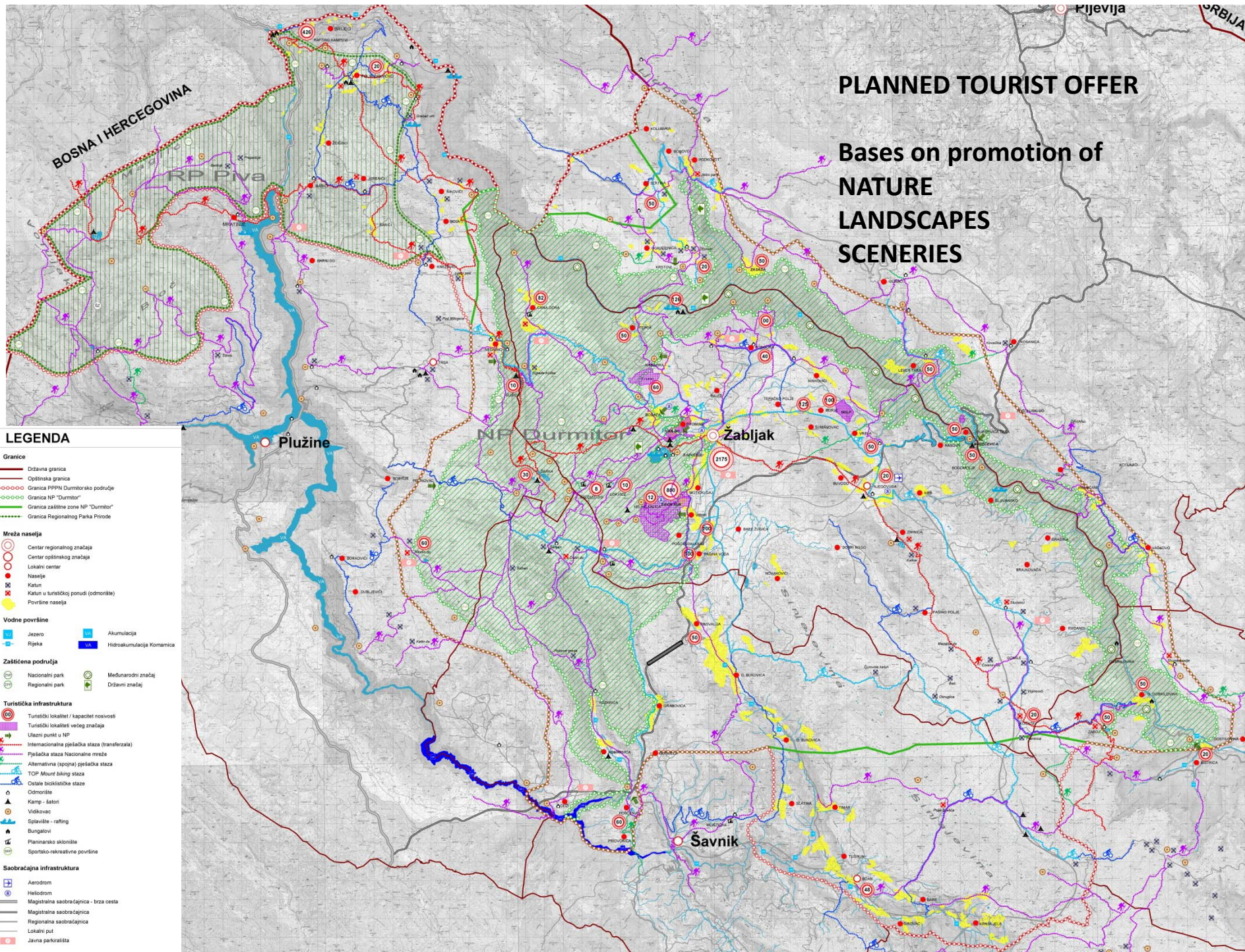


SPATIAL MODEL

Development drivers in the mountain area :
TOURISM,
AGRO-INDUSTRY
KNOWLEDGE

Spatial model key characteristics :
NODES,
ECO-CORRIDORS
GATES to NATIONAL PARK

- Smjernice za sprovođenje plana**
- 1** Prema prostornom planu posebne namjene
 - 2** Prema generacionom urbanističkom rješenju
 - 3** Prema generacionim urbanističkim konceptima iz PPPN Durmitorskog područja
 - 4** Prema detaljnim razradama
 - 5** Prema generacionom urbanističkom konceptu
 - 6** Prema lokalnoj studiji lokacije



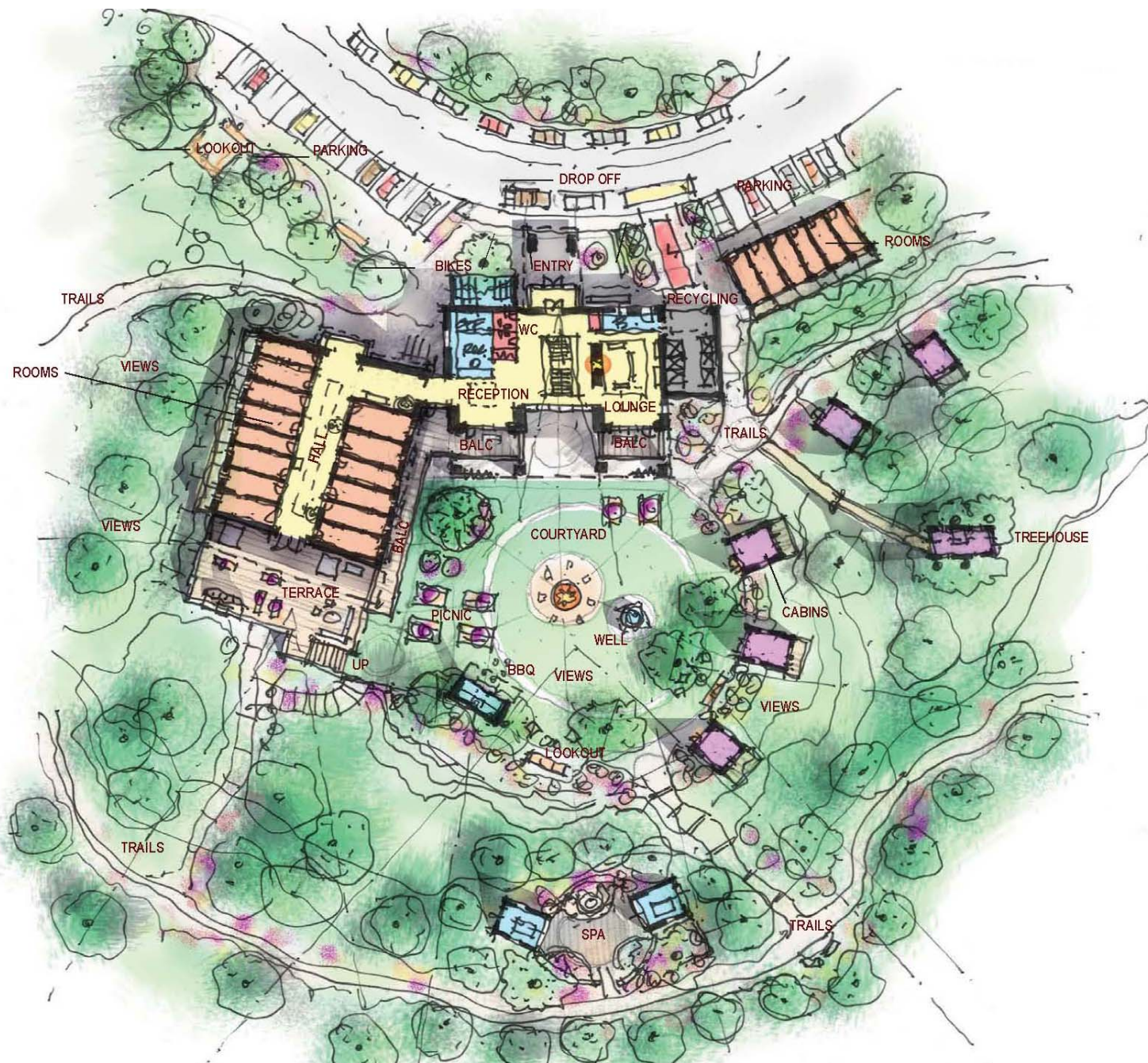
PLANNED TOURIST OFFER

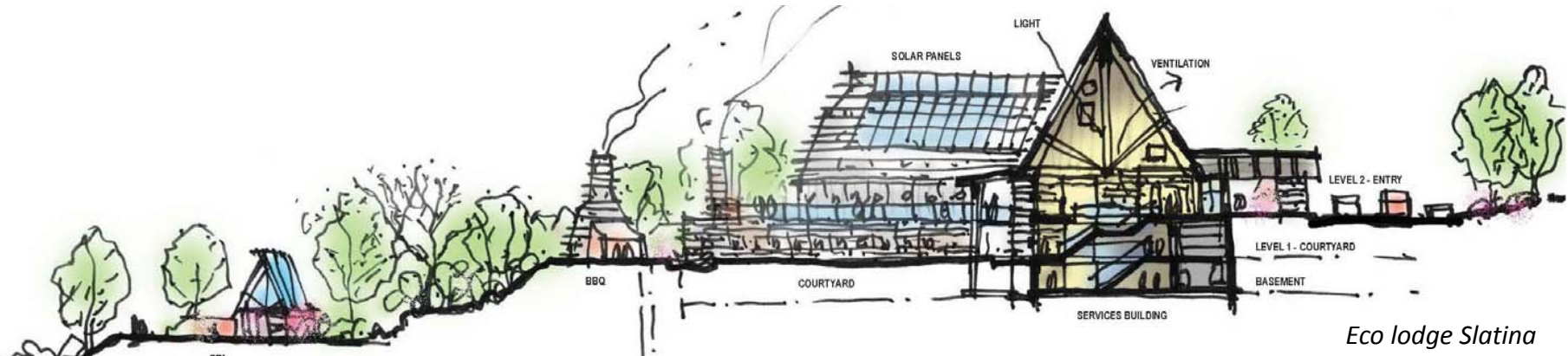
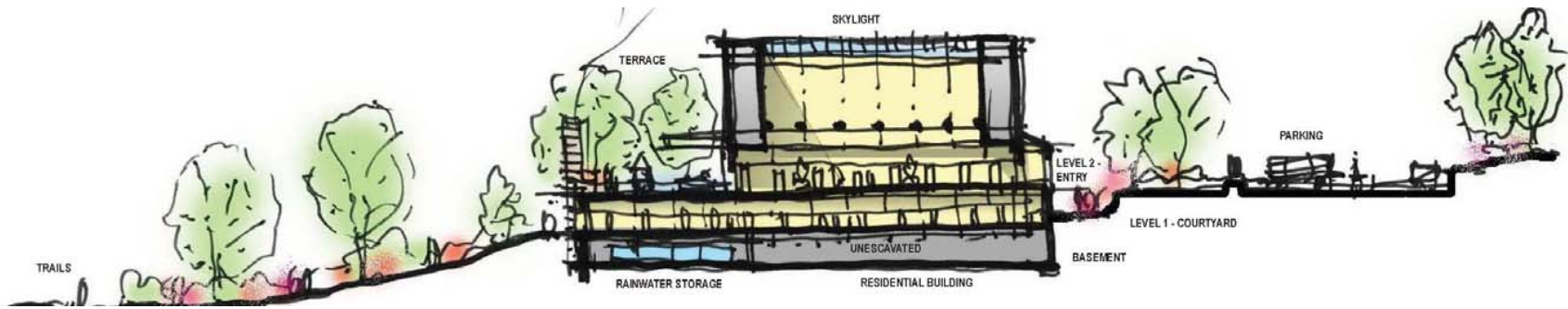
Bases on promotion of
NATURE
LANDSCAPES
SCENERIES

LEGENDA

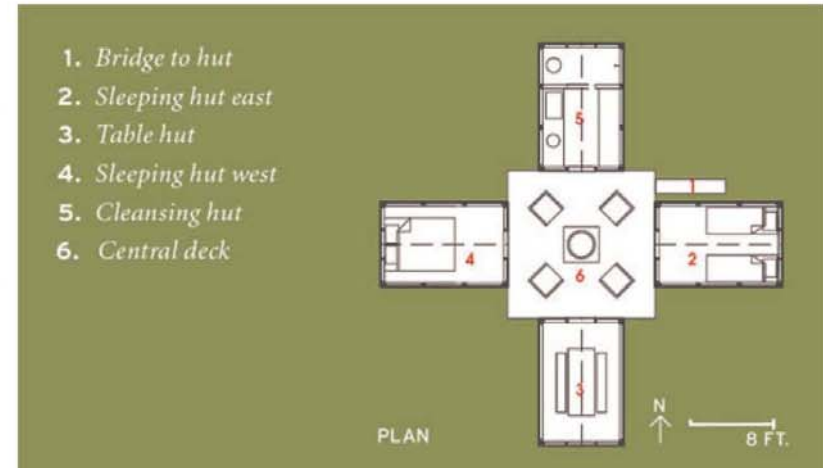
- Granice**
- Državna granica
 - Opštinska granica
 - Granična PPPN Durmitorskog područje
 - Granična NP "Durmitor"
 - Granična zaštitna zone NP "Durmitor"
 - Granična Regionalnog Parka Prirode
- Mreža naselja**
- Centar regionalnog značaja
 - Centar opštinskog značaja
 - Lokalni centar
 - Nasele
 - Katan
 - Kahun u turističkoj ponudi (odmoršte)
 - Površine naselja
- Vodne površine**
- Jezero
 - Rijeka
 - Akumulacija
 - Hidroakumulacija Komarnica
- Zaštićena područja**
- Nacionalni park
 - Regionalni park
 - Međunarodni značaj
 - Državni značaj
- Turistička infrastruktura**
- Turistički lokalitet / kapacitet nosivosti
 - Turistički lokalitet većeg značaja
 - Ulazni punkt u NP
 - Internacionalna pješaka staza (transferzila)
 - Pješaka staza Nacionalne mreže
 - Alternativna (spojna) pješaka staza
 - TOP Mount biking staza
 - Osobne biclističke staze
 - Odmoršte
 - Kamp - šator
 - Vidikovac
 - Splavite - rafting
 - Bungalovi
 - Planinarsko sklonište
 - Sportsko-rekreativne površine
- Saobraćajna infrastruktura**
- Aerodrom
 - Heliodrom
 - Magistralna saobraćajnica - brza cesta
 - Magistralna saobraćajnica
 - Regionalna saobraćajnica
 - Lokalni put
 - Javna parkirališta

CONSTRUCTION OF STRUCTURES ON MT DURMITOR

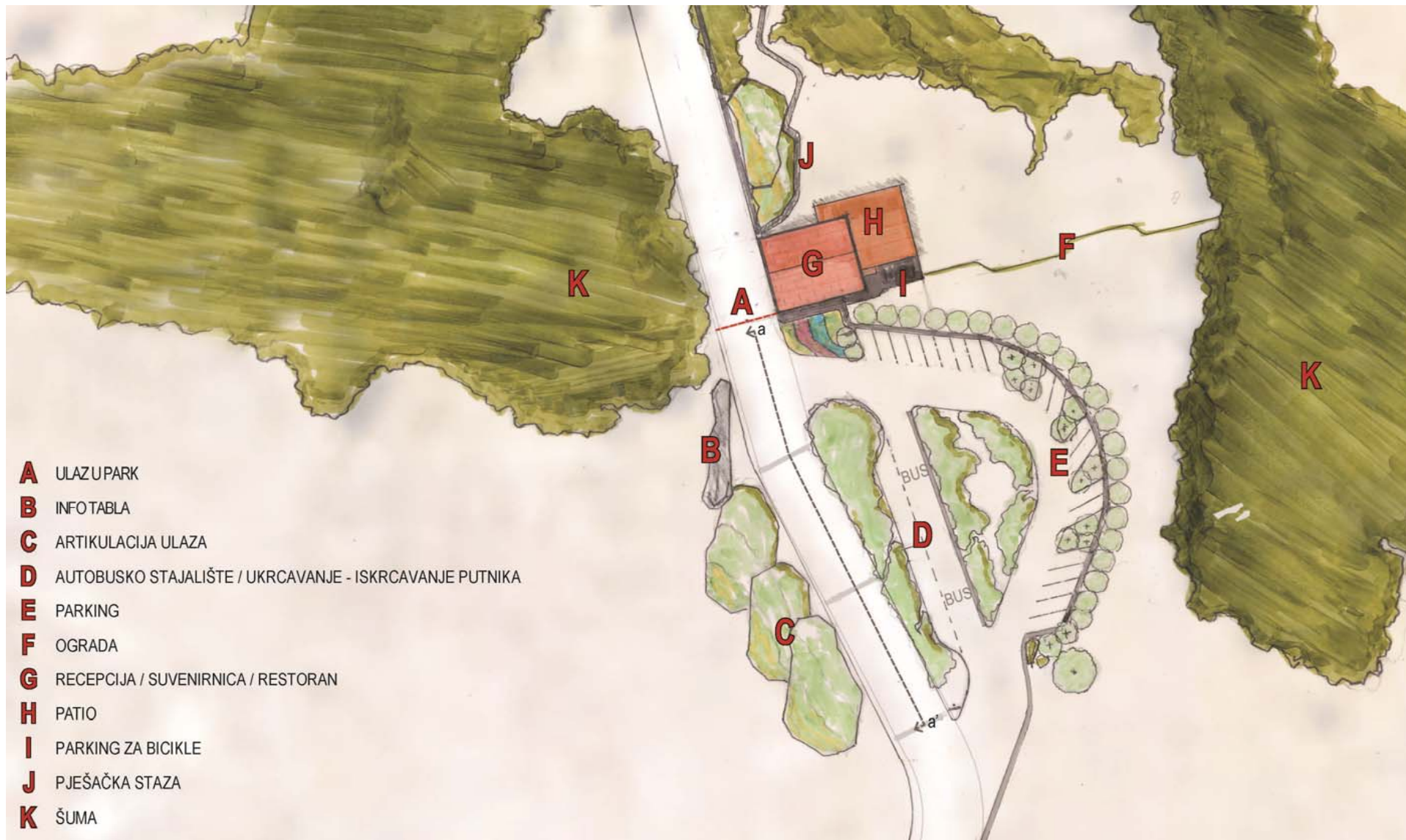




Eco lodge Slatina



Rafting village Budečevica



- A** ULAZ U PARK
- B** INFOTABLA
- C** ARTIKULACIJA ULAZA
- D** AUTOBUSKO STAJALIŠTE / UKRCAVANJE - ISKRCAVANJE PUTNIKA
- E** PARKING
- F** OGRADA
- G** RECEPCIJA / SUVENIRNICA / RESTORAN
- H** PATIO
- I** PARKING ZA BICIKLE
- J** PJEŠAČKA STAZA
- K** ŠUMA



Presjek a' - a

National Park gate - model



New typologies

