



MANUAL FOR LANDSCAPING PLANNING IN MONTENEGRO

Implementation within Spatial plan of special purpose of
COASTAL AREA

ŽELJKA ČUROVIĆ, Landscape architect

projektna organizacija:

 **planplus**
www.planplus.co.me

PROTECTED AND PROMOTED MONTENEGRIN LANDSCAPES, CREATED THROUGH A UNIQUE COMBINATION OF NATURAL AND CULTURAL CONDITIONS, WHICH RETAINS ITS ATTRACTIVENESS, UNIQUENESS AND CULTURAL IDENTITY, IS ONE OF THE VISIONS OF THE LANDSCAPE AND SPATIAL PLANNING IN MONTENEGRO.

The purpose of the Manual

- ▶ Implementation of the provisions of the European Landscape Convention
- ▶ A description of the methodology of the Study and the Landscape Plan
- ▶ Definition of clear objectives in landscape planning.
- ▶ Definition of the level of preparation of the Study and the Landscape Plan for different planning documents
- ▶ Uniformity of planning documents.

For whom is the Manual intended

Planning companies, local governments and legislative authorities and citizens who are interested in planning issues. Landscape planning provides information base for spatial planning and environmental protection

Harmonization with the law (Law on Spatial Planning and Construction of Buildings, Law on Environmental Protection, Law on Protection of Cultural heritage, Law on Strategic Environmental Assessment, Forest Law, Law on Agricultural Land etc.)

Landscape planning tools

Landscape study

Landscape Character assessment

- ▶ define the scope of the work at the office, fieldwork, classification and description

Landscape identification and mapping refers to the identification of:

- ▶ Landscape character types
- ▶ Landscape character areas



Landscape plan

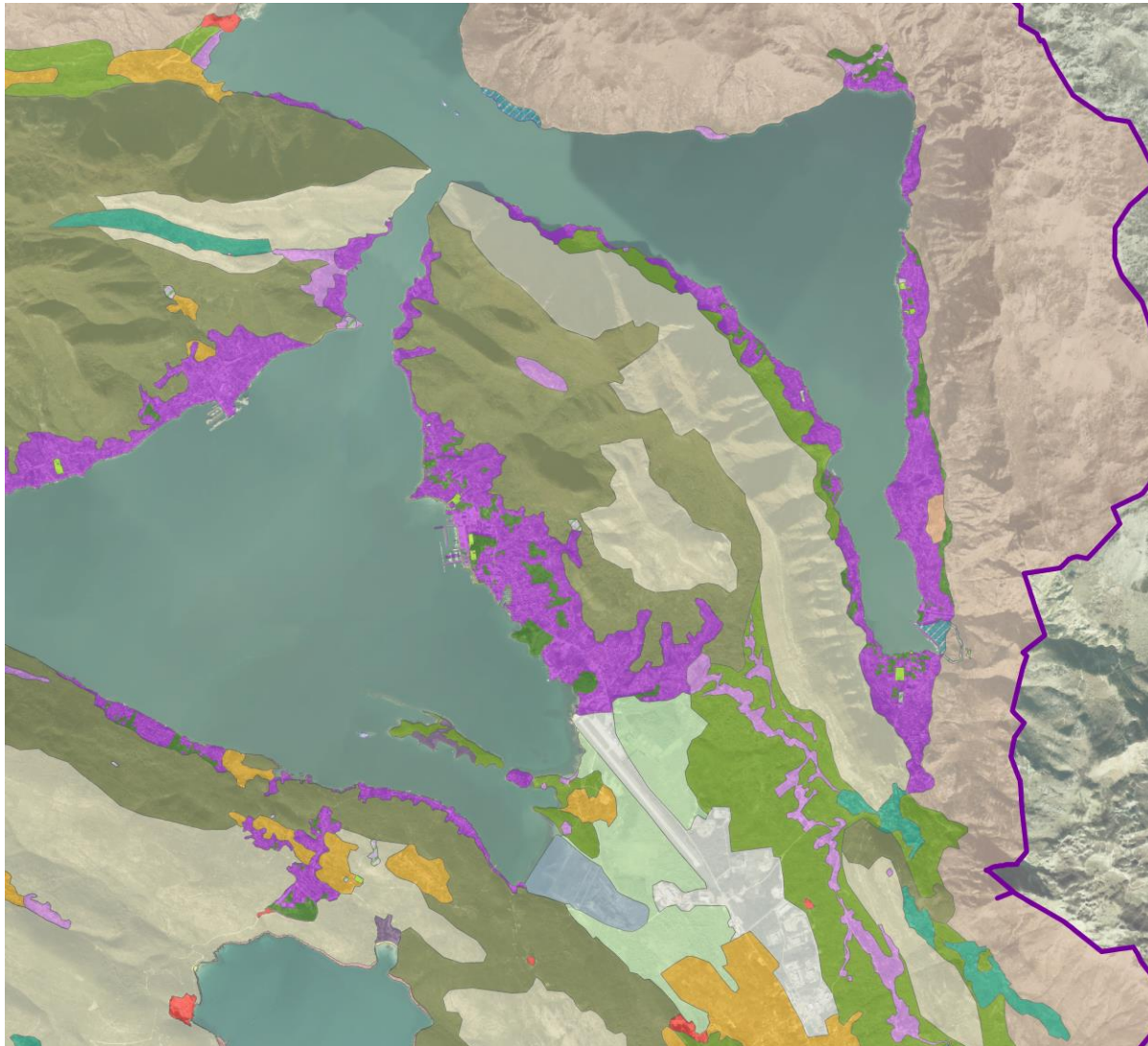
- ▶ Evaluation of landscape
- ▶ Vulnerability analysis
- ▶ Suitability and attractiveness of landscape for different activities (tourism, recreation, agriculture, industry)
- ▶ The concept of landscape development
- ▶ Landscape Protection - principles and measures for the protection and development of natural and cultural landscape
- ▶ Planning and management of landscape and integral nature protection and landscape development for existing and intended land use



Overlapping maps methodology

Coastal area of Montenegro

Landscape character assessment-landscape character types



- Densely developed settlements
- Partially developed settlements
- Airport
- Historical settlements
- Cultural heritage
- Settlement with the traditional fields of moraines
- Settlement with the traditional agricultural field
- Traditional terraces with olive trees
- Settlement with traditional agricultural terraces
- Sports and recreational area
- Green and open areas in settlements
- Resorts
- Lungomare
- Beaches
- Coastal cliffs and rocky shores
- Islands
- Limestone hilly terrain with sparse vegetation
- Mountainous hinterland of the massive limestones
- Forested slopes on flisch and deluvium
- Forested hilly hinterland on limestones
- Fluvioglacial plains
- Coastal and alluvial flood plains
- Lake
- Rivers
- Wetlands
- Devastated landscapes

Application of GIS software



Broj lista

4

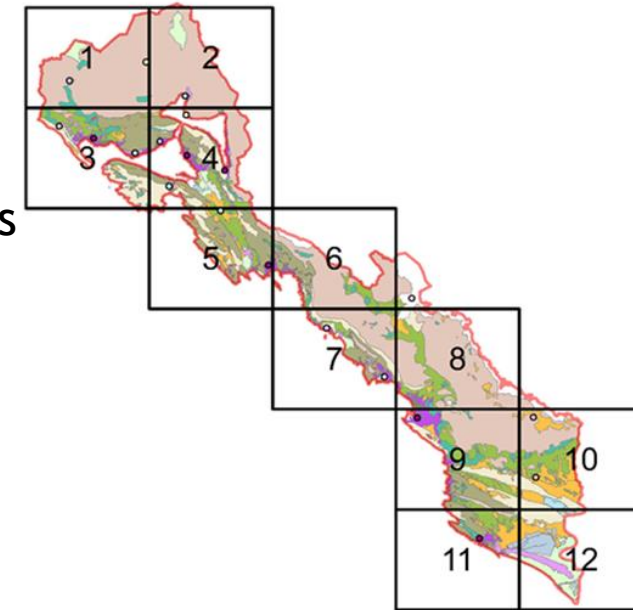
Coastal area of Montenegro

Landscape character assessment- Landscape Character areas



Landscape Character areas are individual and unique geographic areas - landscape units

Landscape character areas have their own individual character and identity

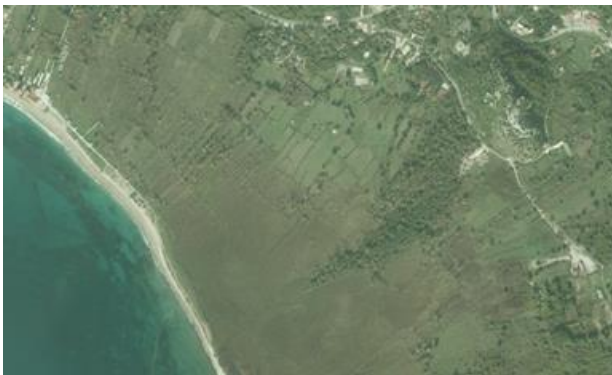


Broj lista

4

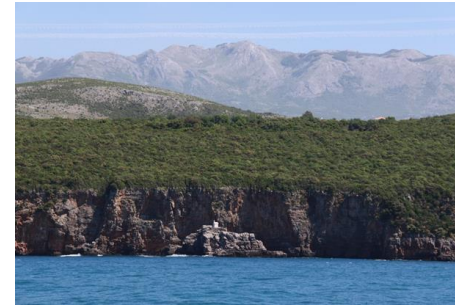
Coastal area of Montenegro

Landscape character assessment- Landscape character types



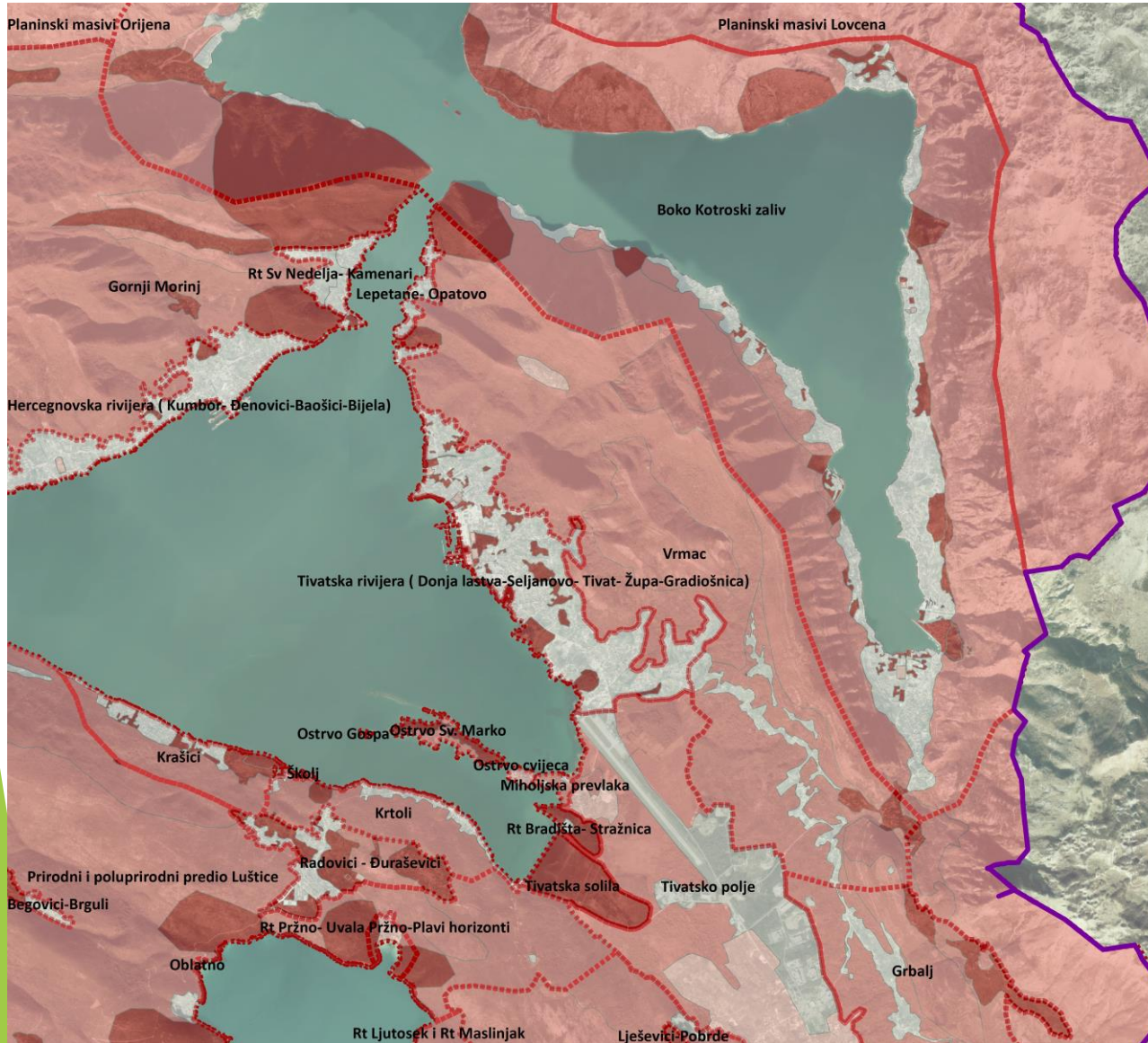
Coastal area of Montenegro

Landscape character assessment- Landscape character types



Coastal area of Montenegro

Landscape study - vulnerability analysis



Vulnerability analysis of visual, cultural and environmental values of landscape

Areas of **high landscape recognizability** and a great landscape diversity, with special forms of relief, vegetation and traditional agricultural patterns have greater vulnerability.

Unconstructed **open spaces** (natural areas) - **caesurae** and corridors between settlements along the coast are **very high valuable and vulnerable** areas that should be preserved because it preserves identity and spirit of the area.

