



pennineprospects

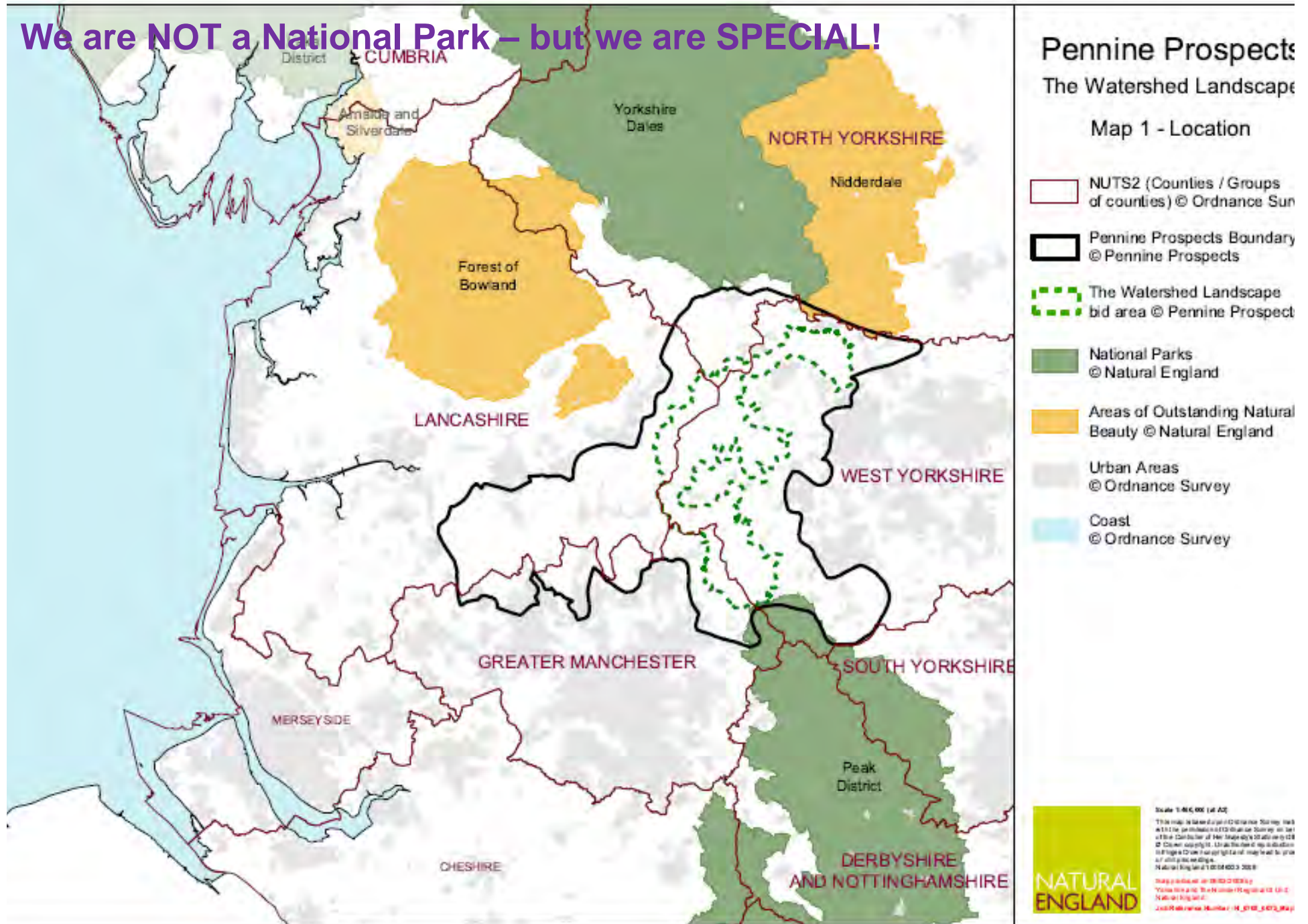
Robin Gray, Project Manager, Watershed Landscape Project



Where are the South Pennines ?



We are NOT a National Park – but we are SPECIAL!







...coming your way...



get involved in the

Tour de France
2014



The Tour de France
The world's greatest
This is Yorkshire
Click



The European Landscape Convention in the UK

The Watershed Landscape Project

- Where is it ?
- What is it ?

In the context of :-

- Policy : The European Landscape Convention
- Principles: Ecosystem Services
- Funding : The Heritage Lottery Fund Landscape Partnership Programme

.....Why does this matter NOW



The Watershed Landscape Project, wins UK Landscape Award 2012



UK
LANDSCAPE
AWARD
2012
DISCOVERING
GREAT
PLACES



The European Landscape Convention in the UK

European Landscape Convention ratified in 2006

Landscape quality objectives = Statements of Environmental Opportunity

This informed the Natural England White Paper, with commitments for diverse and living landscapes.

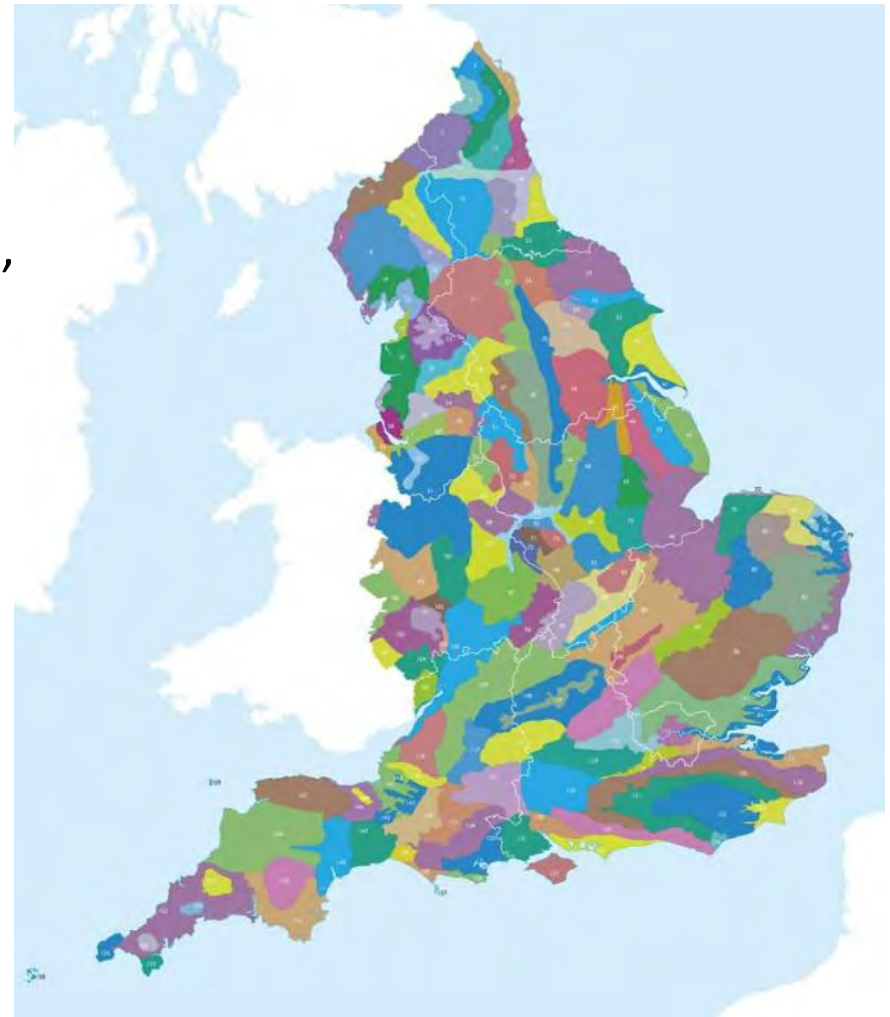
23 We will work with **local communities** in a number of areas throughout England to **support local engagement in landscape planning**.

24 We will work with civil society to **update and improve the consistency of the national landscape character area profiles** and integrate information on the **ecosystem goods and services** that they provide.....

National Character Area profiles

- follow existing boundaries that are familiar and follow natural lines in the landscape
- are defined by assessing geology, land form, soil types, land use, land cover, farm types, patterns of woodland cover, field density and patterns, boundaries, settlement patterns, visible archaeology, parkland, etc
- are broad brush and strategic
- are based on landscape character

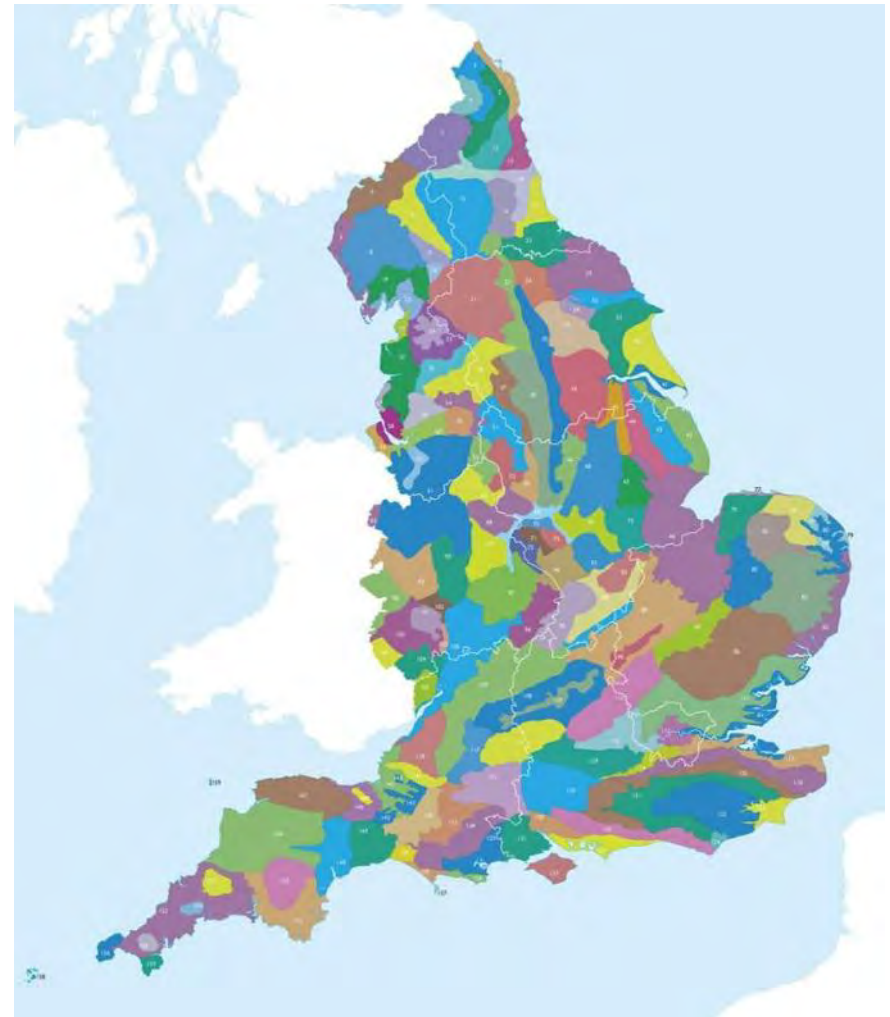
159 National Character Areas



National Character Area profiles

- are about the places people relate to
- provide the context for a wide range of partnerships and community groups
- and a baseline so that changes can be monitored
- achieve integration of biodiversity, geodiversity, landscape character, historic environment, access & engagement, climate change, ecosystem services.....
- Incorporate the ecosystem approach, looking at how landscapes function

159 National Character Areas



Woodland - existing



Woodland - increased woodland 1



Woodland - increased woodland 2



Woodland - increased woodland 3

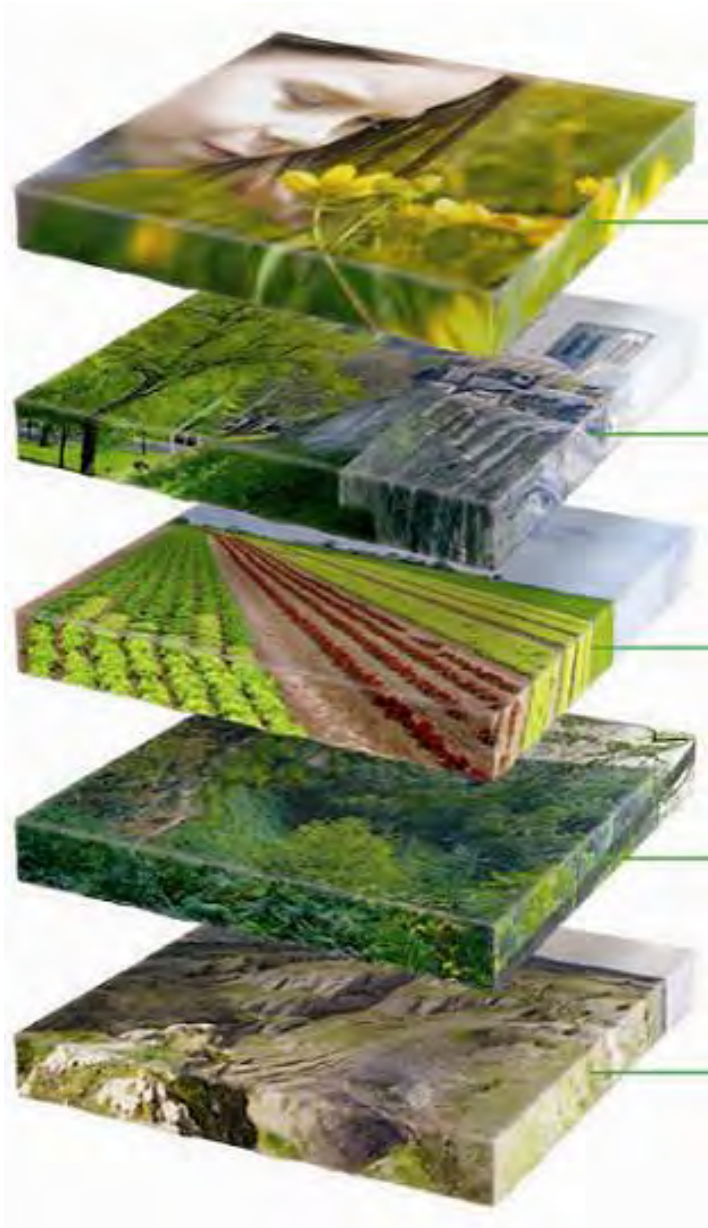




What makes this special ?

- Of international importance for ground nesting bird populations
- [Probably] the greatest concentration of reservoirs in the world [35 plus]
- [Probably] the best place in the world to study mesolithic remains.
- They have inspired artists and writers of international reputation [Brontes, Ted Hughes].
- The most southerly extent of peatland blanket bog in Europe.





Experience

History

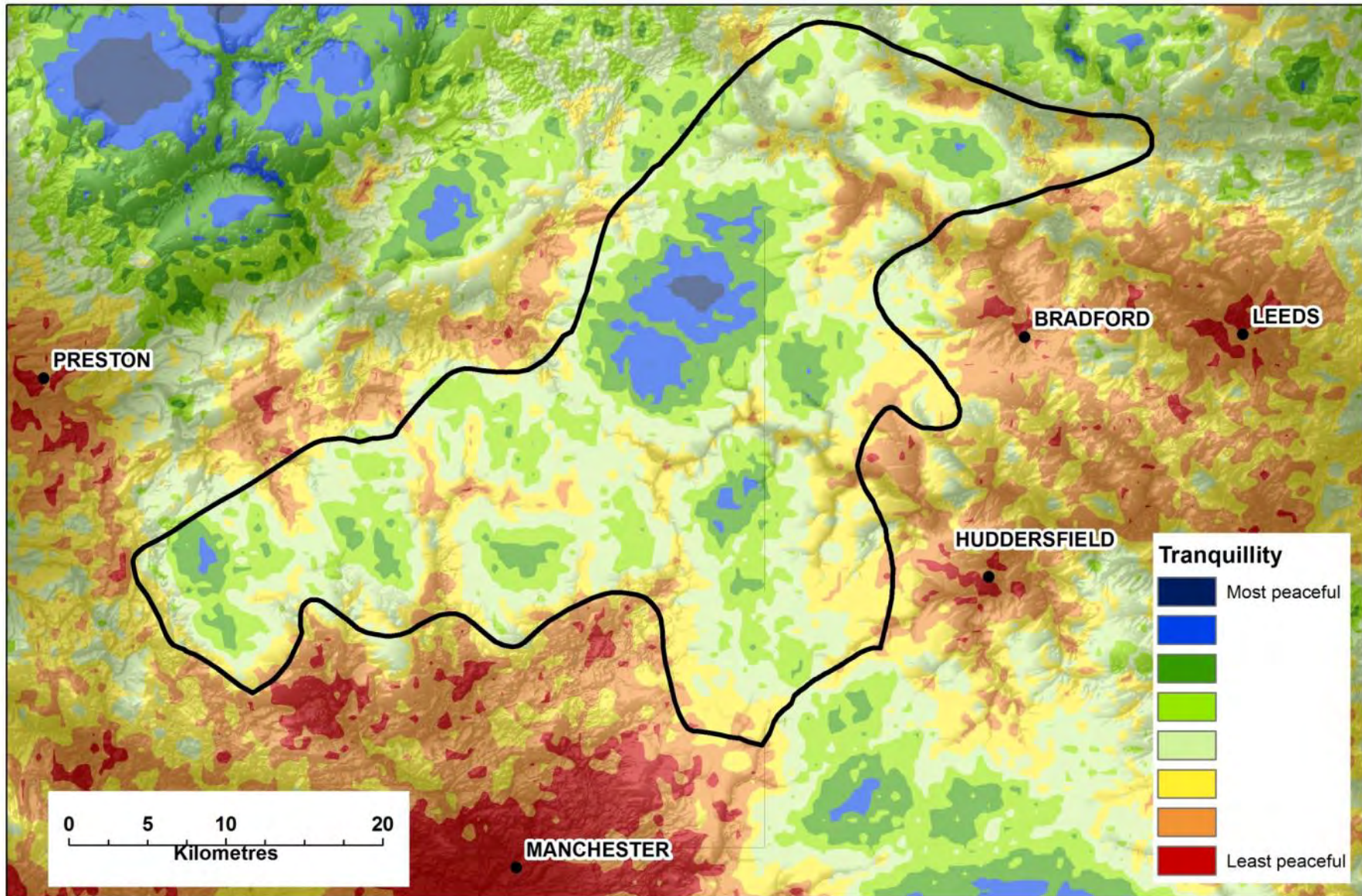
Land use

Biodiversity

Physical features



South Pennines Ecosystems Services Pilot - Perceived Tranquillity



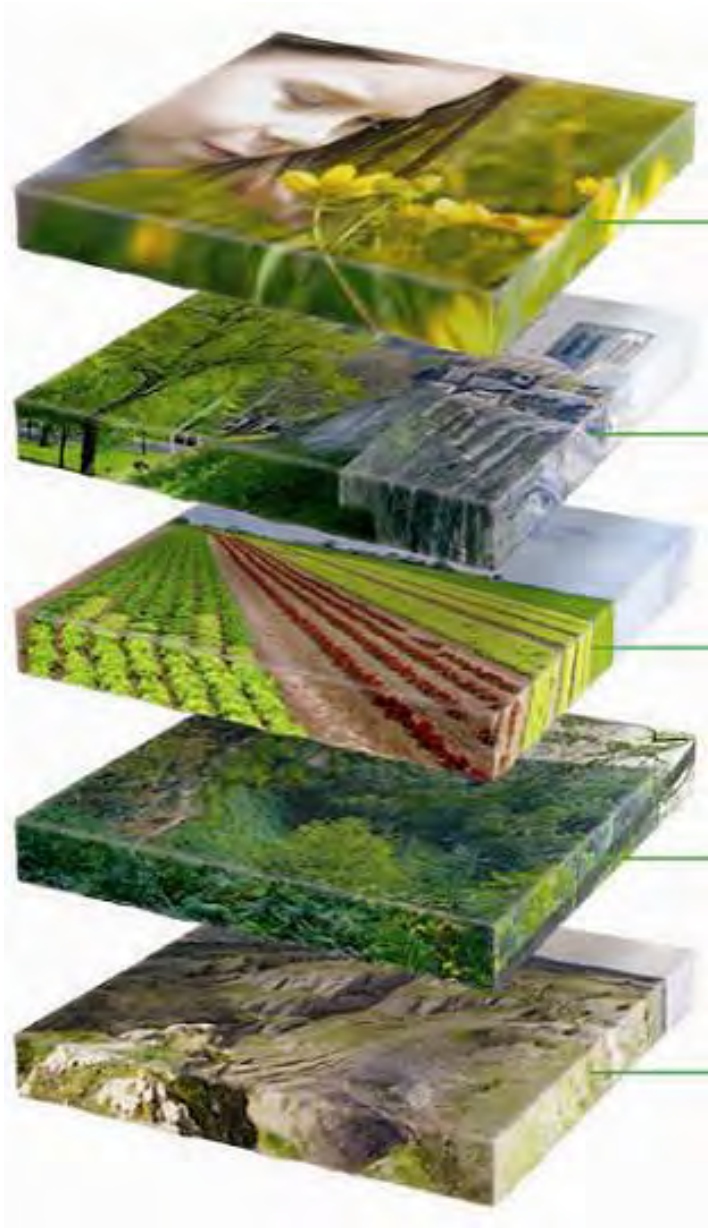












Experience

History

Land use

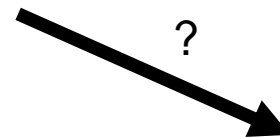
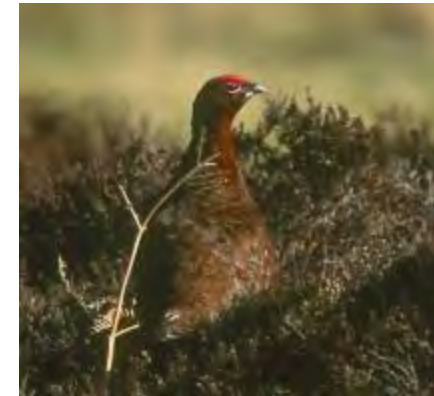
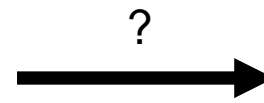
Biodiversity

Physical features

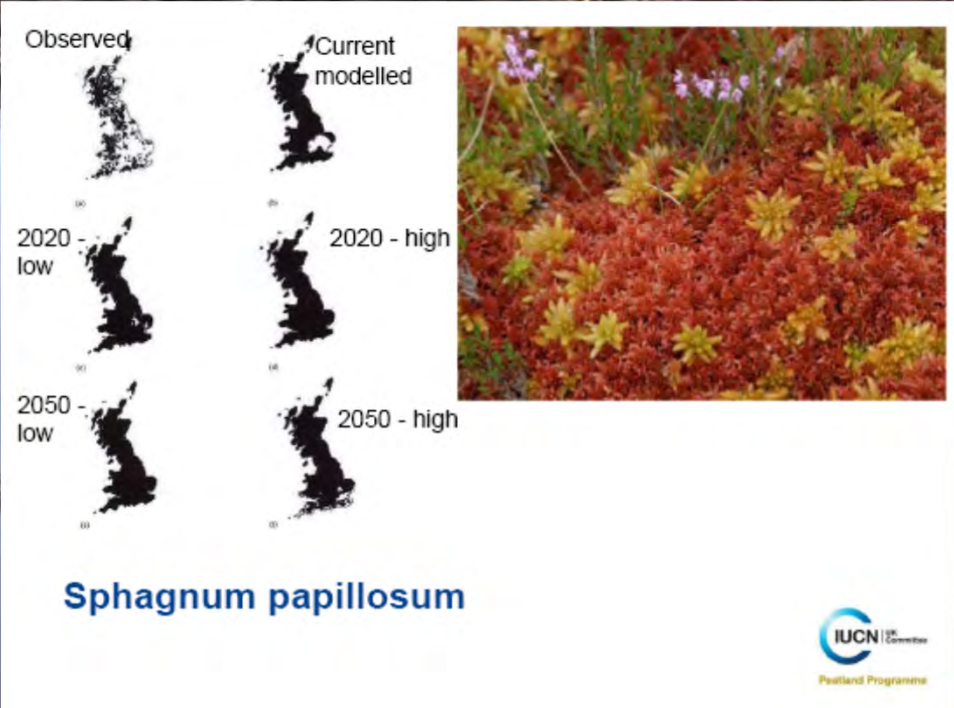




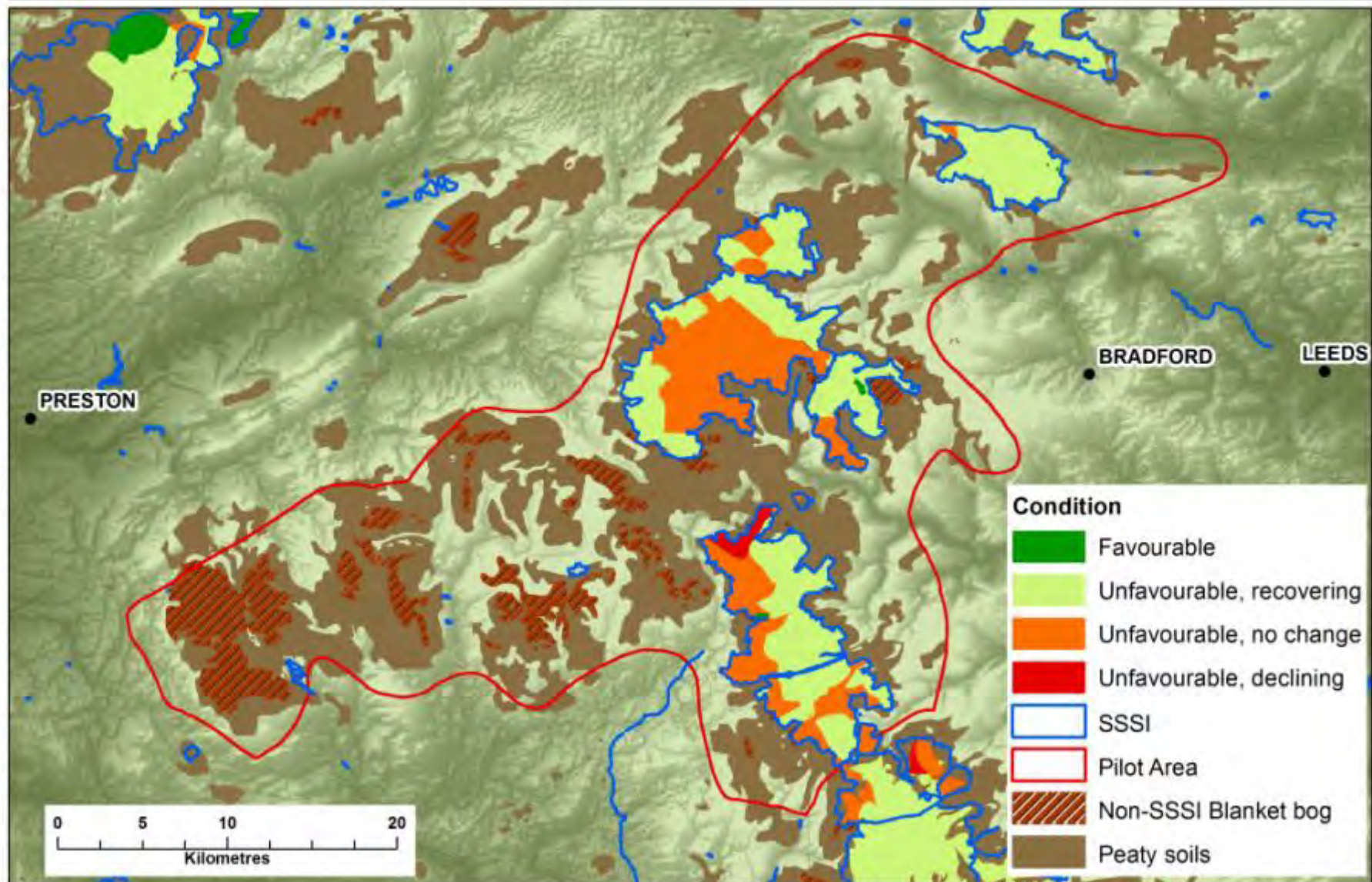
The Ecosystem Approach in practice



©Countryside Agency/Charlie Hedley 03-4516



South Pennines Ecosystems Services Pilot - Condition of Blanket Bog on SSSIs







2003





June 2008



Preamble

The member States of the Council of Europe signatory hereto,

Considering that the aim of the Council of Europe is to achieve a greater unity between its members for the purpose of safeguarding and realising the ideals and principles which are their common heritage, and that this aim is pursued in particular through agreements in the economic and social fields;

Concerned to achieve sustainable development based on a balanced and harmonious relationship between social needs, economic activity and the environment;

Noting that the landscape has an important public interest role in the cultural, ecological, environmental and social fields, and constitutes a resource favourable to economic activity and whose protection, management and planning can contribute to job creation;

Aware that the landscape contributes to the formation of local cultures and that it is a basic component of the European natural and cultural heritage, contributing to human well-being and consolidation of the European identity;

Acknowledging that the landscape is an important part of the **quality of life for people everywhere: in urban areas and in the countryside, in degraded areas as well as in areas of high quality, in areas recognised as being of outstanding beauty as well as everyday areas;**

Noting that developments in agriculture, forestry, industrial and mineral production techniques and in regional planning, town planning, transport, infrastructure, tourism and recreation and, at a more general level, changes in the world economy are in many cases accelerating the transformation of landscapes;

Wishing to respond to the public's wish to enjoy high quality landscapes and to play an active part in the development of landscapes;

Believing that the landscape is a key element of individual and social well-being and that its protection, management and planning entail rights and responsibilities for everyone;

Having regard to the legal texts existing at international level in the field of protection and management of the natural and cultural heritage, regional and spatial planning, local self-government and transfrontier co-operation, in particular the [Convention on the Conservation of European Wildlife and Natural Habitats](#) (Bern, 19 September 1979), the [Convention for the Protection of the Architectural Heritage of Europe](#) (Granada, 3 October 1985), the [European Convention on the Protection of the Archaeological Heritage \(revised\)](#) (Valletta, 16 January 1992), the [European Outline Convention on Transfrontier Co-operation between Territorial Communities or Authorities](#) (Madrid, 21 May 1980) and its additional protocols, the [European Charter of Local Self-government](#) (Strasbourg, 15 October 1985), the Convention on Biological Diversity (Rio, 5 June 1992), the Convention concerning the Protection of the World Cultural and Natural Heritage (Paris, 16 November 1972), and the Convention on Access to Information, Public Participation in Decision-making and Access to Justice on Environmental Matters (Aarhus, 25 June 1998);

Acknowledging that the quality and diversity of European landscapes constitute a common resource, and that it is important to co-operate towards its protection, management and planning;

Wishing to provide a new instrument devoted exclusively to the protection, management and planning of all landscapes in Europe,

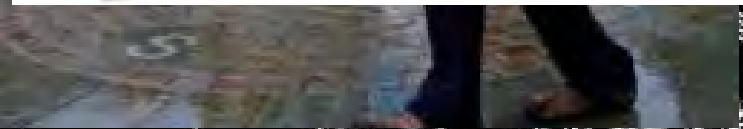
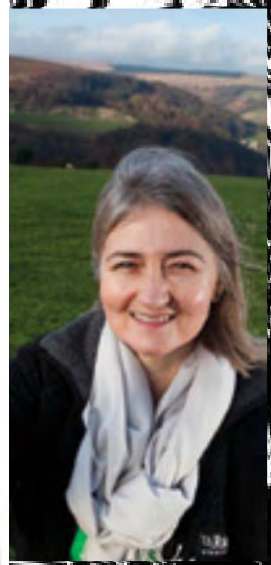
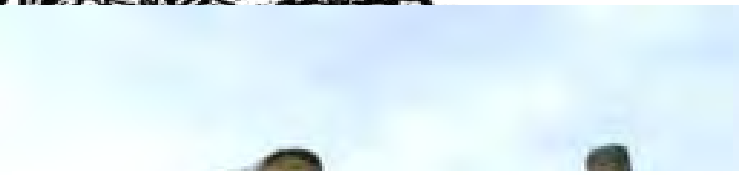
CONFERENCE
SATURDAY 16 MARCH 2012
VENUE: 17:00-18:00
SUNDAY 17 MARCH 2012
VENUE: 10:00-11:00
MIDLAND SOUTH-WEST
UNIVERSITY OF BRISTOL





RSPB Twite Recovery Project








watershedlandscapes
the south pennines





A landscape photograph showing a dirt path that curves through a field of dry, golden-brown grass. The path leads towards a distant, low hill under a sky filled with large, grey, overcast clouds. In the distance, two small figures can be seen walking on the path. The overall mood is quiet and somewhat somber.

"When I am sat there nothing can get to me, no-one can bother me but anywhere else it can. When I am sat there I hardly get anyone walking past. It is just de-stressing."

"I come here for the solitude. Occasionally you don't want to see anyone else. It is escapism, time to think. It is like freedom somehow."

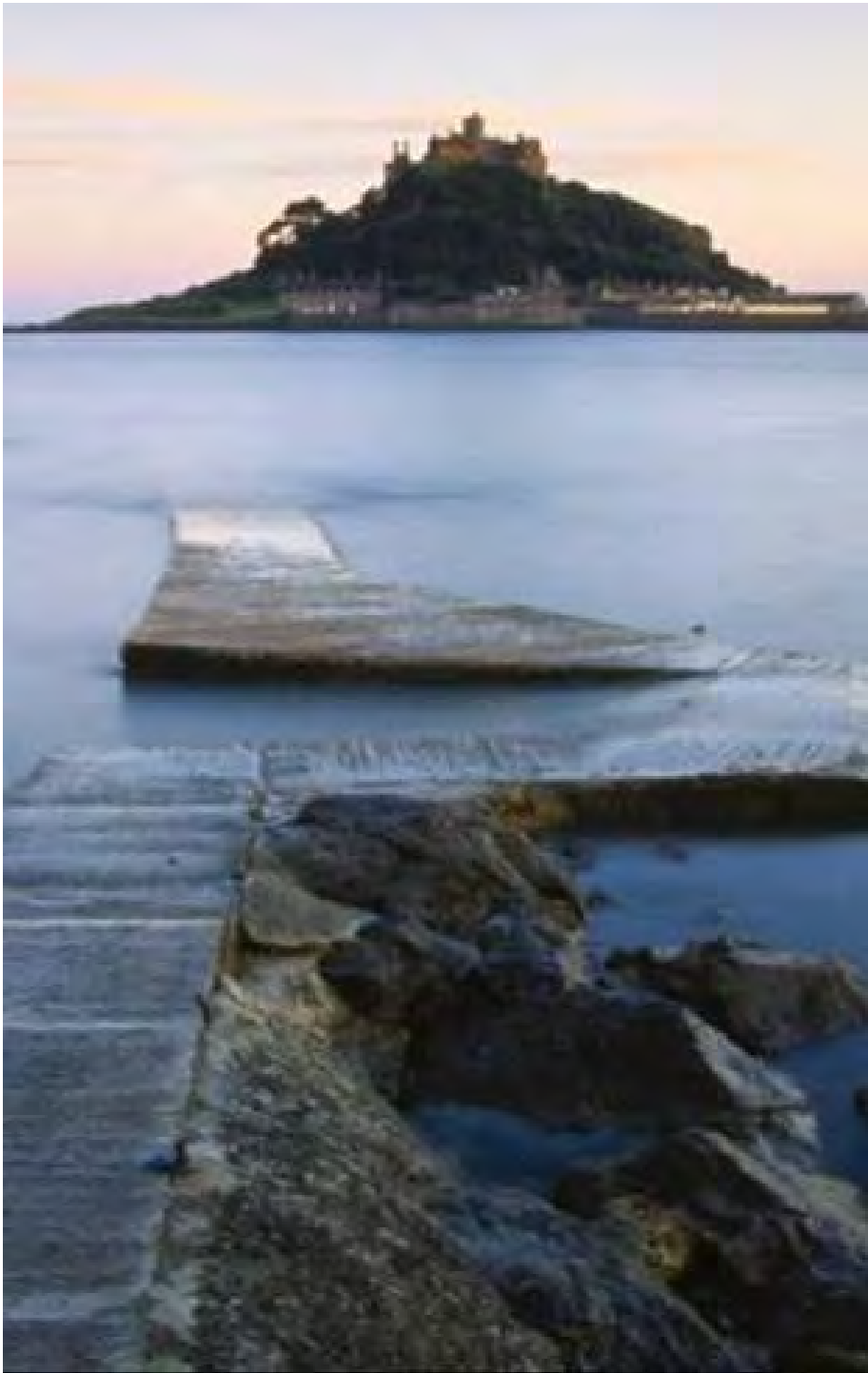
"My wife asks me, 'What do you think about when you are up there?' and I say 'nothing', that's the point!"

Where does funding come from ?

Supported in partnership by:



The European Agricultural
Fund for Regional Development:
Europe Investing in Rural Areas

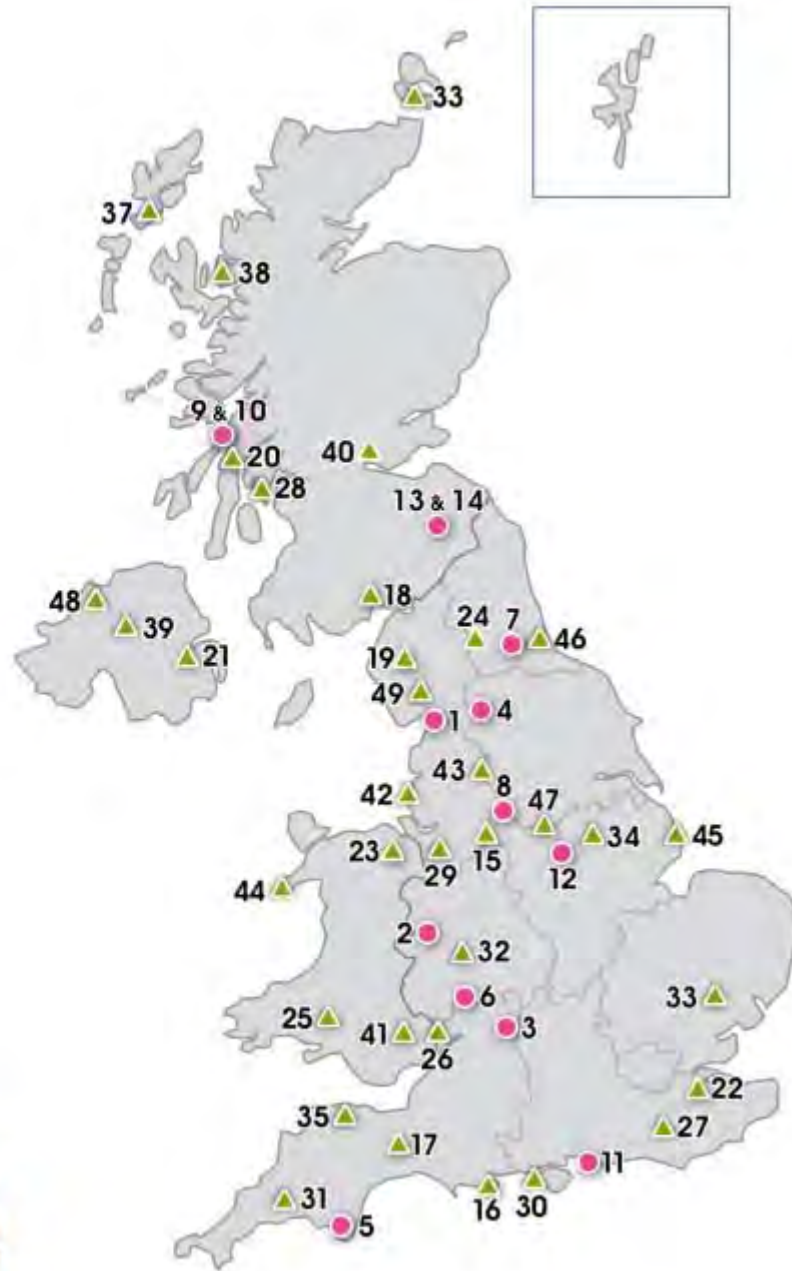


1. **Focused on an area of distinctive landscape character**
2. **Schemes covering 20-200km²**
3. **Partnerships of national, regional and local stakeholders**

Heritage Lottery Fund Landscape Partnership and Area Schemes

April 2009

- Area Scheme
- ▲ Landscape Partnership



Why does this matter # NOW





www.defra.gov.uk

Securing a healthy natural environment:

An action plan for embedding an ecosystems approach

UK National Ecosystem





pennineprospects

Robin Gray, Project Manager, Watershed Landscape Project

Robin.gray@pennineprospects.co.uk

www.watershedlandscape.co.uk

www.pennineprospects.co.uk

