



BERE ISLAND CONSERVATION PLAN



What is a Conservation Plan

- The idea started in Australia in 1980s
- Promoted by Heritage Council in Ireland
- Examples include
 - Clonfert Cathedral, Rothe House, Russborough House, Portlaoigh Village, Leamonaghan, Kilkenny city walls
- Used by local authority heritage officers




2

What is a Conservation Plan

A DOCUMENT WHICH SETS OUT:

- Why the asset is significant
- How the significance is vulnerable
- Policies for retaining the significance
- Less uncertainty about conservation issues
- Conservation becomes a partnership rather than an adversarial process



3


Stage 1 and 2

1. UNDERSTANDING THE PLACE:

- Documentary and physical evidence
- Co-ordinating and analysing evidence
- Assessing and stating significance

2. CONSERVATION POLICY AND IMPLEMENTATION

- Developing a conservation policy
- Stating policy
- Evolving strategies and



4

The Process

- Partnership
- Public meetings
- Consultants hired
- Questionnaire
- Working groups
- Launch
- Recruit development worker
- 5 priorities



5

The Heritage Council

- Statutory body est. by Heritage Act, 1995,
- Identification of policies and priorities for heritage – landscape a priority since 1999
- Promotion and co-ordination of activities relating to heritage
- 11 Members + working groups, – staff of 13



6

BERE ISLAND CONSERVATION PLAN

- Partnership between the Bere Island community, The Heritage Council & Cork County Council
- Conserve Bere Island's heritage.
- Planning a sustainable future for Bere Island.
- Create work opportunities for islanders.
- Build on traditional skills.
- Protect Bere Island's environment.
- Deliver the islanders vision of the island's future.



7

ARTEFACTS & HERITAGE

- Artefact collection.
- Shipwreck database & maritime heritage.
- Genealogy database.
- Heritage Centre – exhibitions.
- Built Heritage
- Rubicon Heritage Study.
- Heritage Week.



8

LONEHORT BATTERY

- Construction started in 1897.
- Played a key role in defending Fort Berehaven.
- Potential to be a major tourist attraction for Island.
- Part of a Cork military trail



9

ARCHIVE PHOTOS

- Over 700 old photos were collected as part of Culture 2000 project.
- In process of being displayed electronically at Heritage Centre.
- Plans to publish a photographic book.
- Ed White film of island life in 1950s & 1960s.



10

SMALL FOOD PRODUCTION

- Cookery lessons.
- Food production courses – bread making, brewing, fish filleting.
- Working with a US based micro-brewery with Bere Island links.
- Distinct Bere Island brand.



11

AQUACULTURE

- 3 licences granted in 2011 to cultivate oysters, seaweed & scallops.
- Juvenile oysters purchased in 2012, & 2013.
- Partnership with commercial seaweed enterprise.



12

AGRICULTURE

- Cattle & Sheep
- Beekeeping.
- Pig rearing.
- CAP
- EU submission for Island brand
- Commercial food production unit.



13

ENERGY

In 2011 Bere Island's 95 households & 19 businesses.

- 110,000 litres of heating oil.
- 65,000kg of coal
- 290,000 litres of fuel for vehicles & ferries.
- IRDA Project:
 - Short term (1-5 yrs.):
 - Medium Term (5-10yrs)
 - Long Term (10-20yrs)
- Smilegov
 - Identify bankable projects



14

WASTE MANAGEMENT

- Recycling Centre.
- Waste collection.
- Awareness campaign.
- Island school – Green Flags
- Island has won the Tidy Island Award for 7 consecutive years.
- Renewable energy.



15

INVASIVE SPECIES

- Eradication of Gunnera & Japanese knotweed.
- Public awareness campaign.
- Funding.
- Other potential invasive species.



16

WORKING WITH YOUTH

- In 2013 over 150 attended summer camps over a 3 week period.
- Nature walk to beach.
- Talk by Rubicon Heritage to island school.
- Cycle day at school.
- Parent & Toddler group
- After school events



17

TOURISM

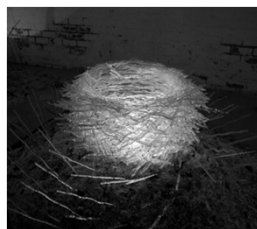
- Tourism & environmental Group.
- Festivals.
- Guidebooks
- New website.
- Promoting island.
- Gathering Event.
- Packages: cultural, historical package breaks.



18

CRAFT

- Artists in Residency project.
- Classes run in traditional crafts: knitting, crochet, basketry, lace making.
- Craft shop.
- Islands' craft network.
- Encourage others to travel to island for classes.



19

CULTURAL

- Cultural exchange with Islands
- Bere Island Theatre Troupe formed in 2003.
- Forged links with Newfoundland.
- Involved islanders from all ages in plays.
- Hosts other touring companies
- Student Internships



20

GOING FORWARD

- Marine opportunities
- Agriculture/CAP
- Build on our military and maritime heritage.
- Encourage families to move to the island.
- Ensure the future role of Bere Island as a viable and vibrant island community.



21

Thank You

