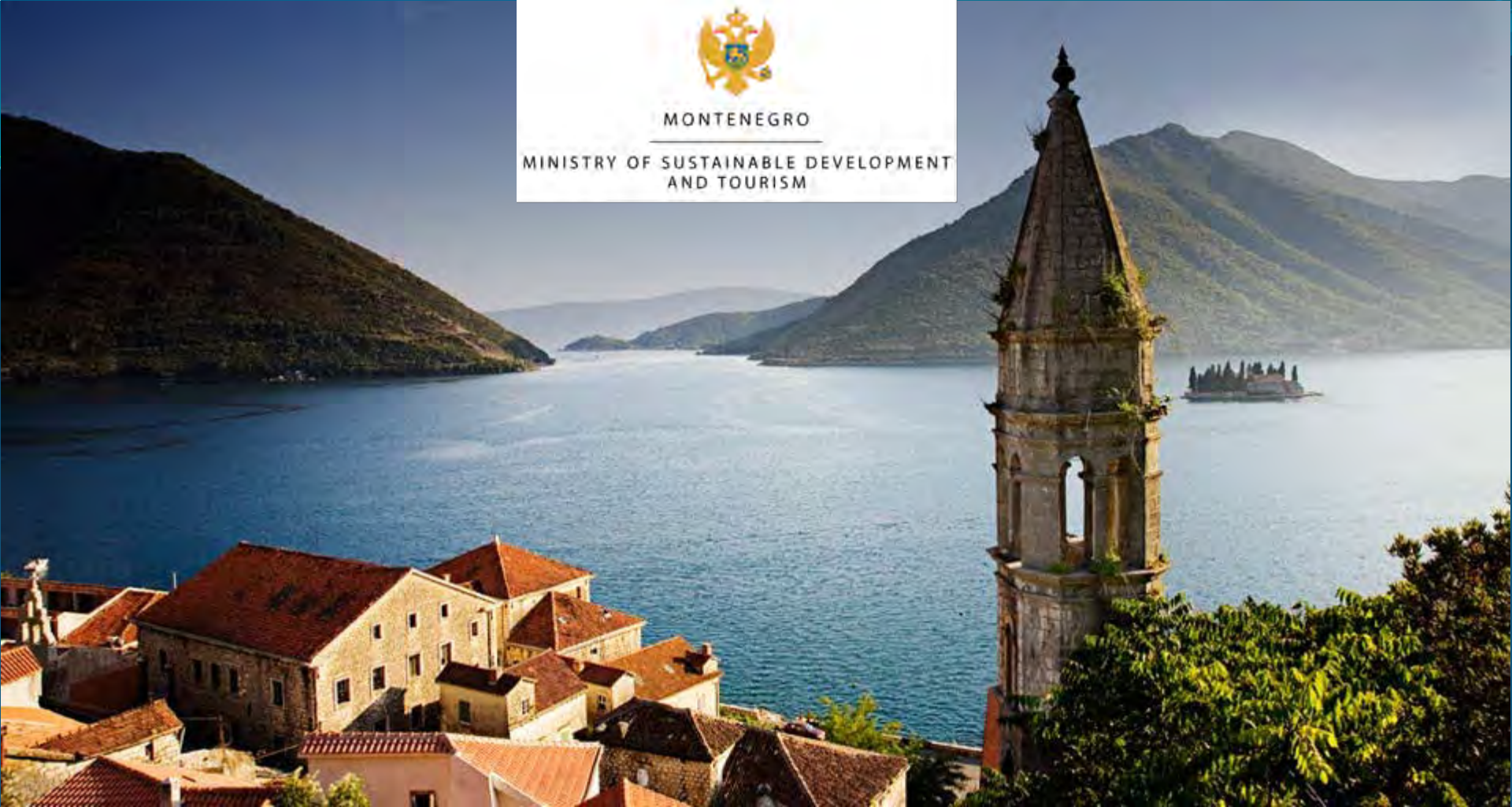




MONTENEGRO

MINISTRY OF SUSTAINABLE DEVELOPMENT
AND TOURISM



Identification and assessment of Landscape

Sanja Ljeskovic Mitrovic, Wroclaw , June 2014



MONTENEGRO ID



- area: 13,812 km²
- population: 620,145
- capital: Podgorica
- national currency: Euro
- number of sunny days in a year: 180
- climate: Mediterranean and continental



Montenegro has 21 municipalities

- arable land - 37%
- forests - 45%
- urban and rural settlements, roads and waters - 18%

regions

- coastal region – 1,591 km²
- central region – 4,917 km²
- northern region – 7,304 km²

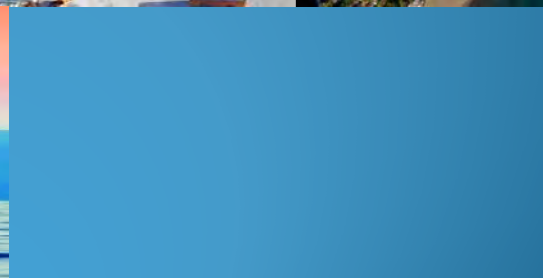
population

- coastal region – 23.78 %
- central region – 45.85 %
- northern region – 30.37 %



Montenegrin coast

- Total length – 336.62 km
- Length of beaches – 73 km
- Cities - Herceg Novi, Kotor, Tivat, Budva, Bar, Ulcinj
- Ports - Zelenika, Kotor, Bar





**13th COUNCIL OF EUROPE MEETING OF THE WORKSHOPS
FOR THE IMPLEMENTATION OF THE EUROPEAN LANDSCAPE CONVENTION**

*“Territories of the future, landscape identification and assessment: an exercise in democracy”
organised by the Council of Europe and the Ministry of Sustainable Development and Tourism of
Montenegro within the framework of the working programme of the European Landscape
Convention*

Cetinje, Montenegro, 2-3 October 2013





13th Council of Europe Meeting of the Workshops for the implementation of the European Landscape Convention on *“The future of the territories, landscape identification and assessment: an exercise in democracy”* has been organized by Ministry of Sustainable Development and Tourism of Montenegro in co-operation with the Council of Europe – Spatial Planning, Landscape and Cultural Heritage Division, Democratic Governance, Culture and Diversity Directorate.

A study visit was organized on 1st October 2013, for the official delegates of the Member States of the Council of Europe and speakers in the program. They visited Old Royal Capital Cetinje, village Njeguši, Kotor – Old town, Tivat – Porto Montenegro, by boat from Kotor.



IDENTIFY, ANALYSE, CHARACTERISE THE LANDSCAPE *TO ACT, IMPROVE THE KNOWLEDGE (LC COE)*

With the active participation of the interested parties, as stipulated in Article 5.c, and with a view to improving knowledge of its landscapes, each Party undertakes:

- a
 - i to identify its own landscapes throughout its territory;
 - ii to analyse their characteristics and the forces and pressures transforming them;
 - iii to take note of changes;
- b to assess the landscapes thus identified, taking into account the particular values assigned to them by the interested parties and the population concerned.

2 These identification and assessment procedures shall be guided by the exchanges of experience and methodology, organised between the Parties at European level pursuant to Article 8.





MANUAL FOR LANDSCAPING PLANNING IN MONTENEGRO

Implementation within Spatial plan
of special purpose of COASTAL AREA

PROTECTED AND PROMOTED MONTENEGRIN LANDSCAPES, CREATED THROUGH A UNIQUE COMBINATION OF NATURAL AND CULTURAL CONDITIONS, WHICH RETAINS ITS ATTRACTIVENESS, UNIQUENESS AND CULTURAL IDENTITY, IS ONE OF THE VISIONS OF THE LANDSCAPE AND SPATIAL PLANNING IN MONTENEGRO.

The purpose of the Manual

- Implementation of the provisions of the European Landscape Convention
- A description of the methodology of the Study and the Landscape Plan
- Definition of clear objectives in landscape planning.
- Definition of the level of preparation of the Study and the Landscape Plan for different planning documents
- Uniformity of planning documents.

For whom is the Manual intended

Planning companies, local governments and legislative authorities and citizens who are interested in planning issues. Landscape planning provides information base for spatial planning and environmental protection

Harmonization with the law (Law on Spatial Planning and Construction of Buildings, Law on Environmental Protection, Law on Protection of Cultural heritage, Law on Strategic Environmental Impact Assessment, Forest Law, Law on Agricultural Land etc.)

Landscape planning tools

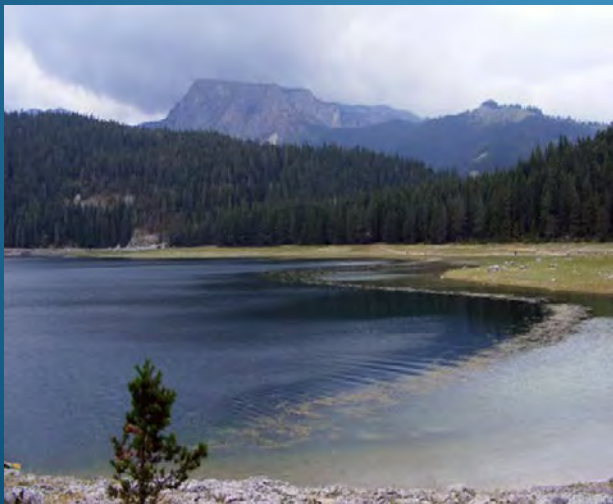
Landscape study

Landscape Character assessment

- define the scope of the work at the office, fieldwork, classification and description

Landscape identification and mapping refers to the identification of:

- **Landscape character types**
- **Landscape character areas**



Landscape plan

- **Evaluation** of landscape
- **Vulnerability** analysis
- **Suitability and attractiveness** of landscape for different activities (tourism, recreation, agriculture, industry)
- **The concept** of landscape development
- **Landscape Protection** - principles and measures for the protection and development of natural and cultural landscape
- **Planning and management of landscape** and integral nature protection and landscape development for existing and intended land use

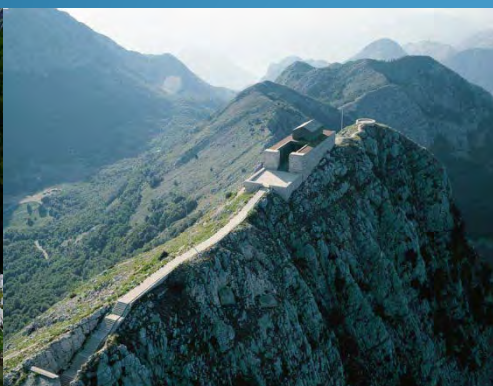


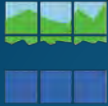
Overlapping maps methodology

IDENTIFYING AND MAPPING OF LANDSCAPE MONTENEGRO



COASTAL AREA SPATIAL PLAN





SECTORAL CHARACTERISATION

PROBLEMS

RESPONSE

THEMES

DESCRIPTION

SYNTHESIS

ENVIRONMENT

ENV. & HEALTH

BIODIVERSITY

SOIL/EROSION

SEISMICS (HAZARD)

SURFACE WATERS

GROUND WATERS

SEA

LANDSCAPE

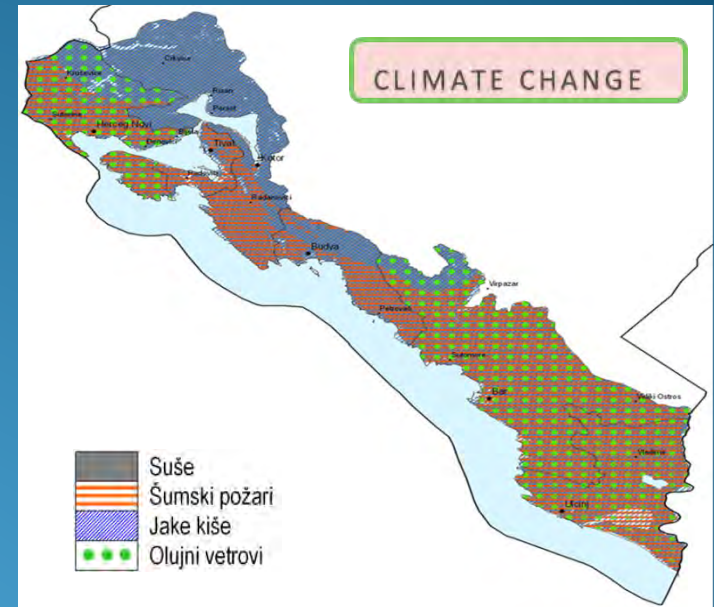
CLIMATE CHANGE

LAND USE

SOCIO-ECONOMICS

GOVERNANCE

CLIMATE CHANGE





SECTORAL CHARACTERISATION

THEMES

ENVIRONMENT

LAND USE

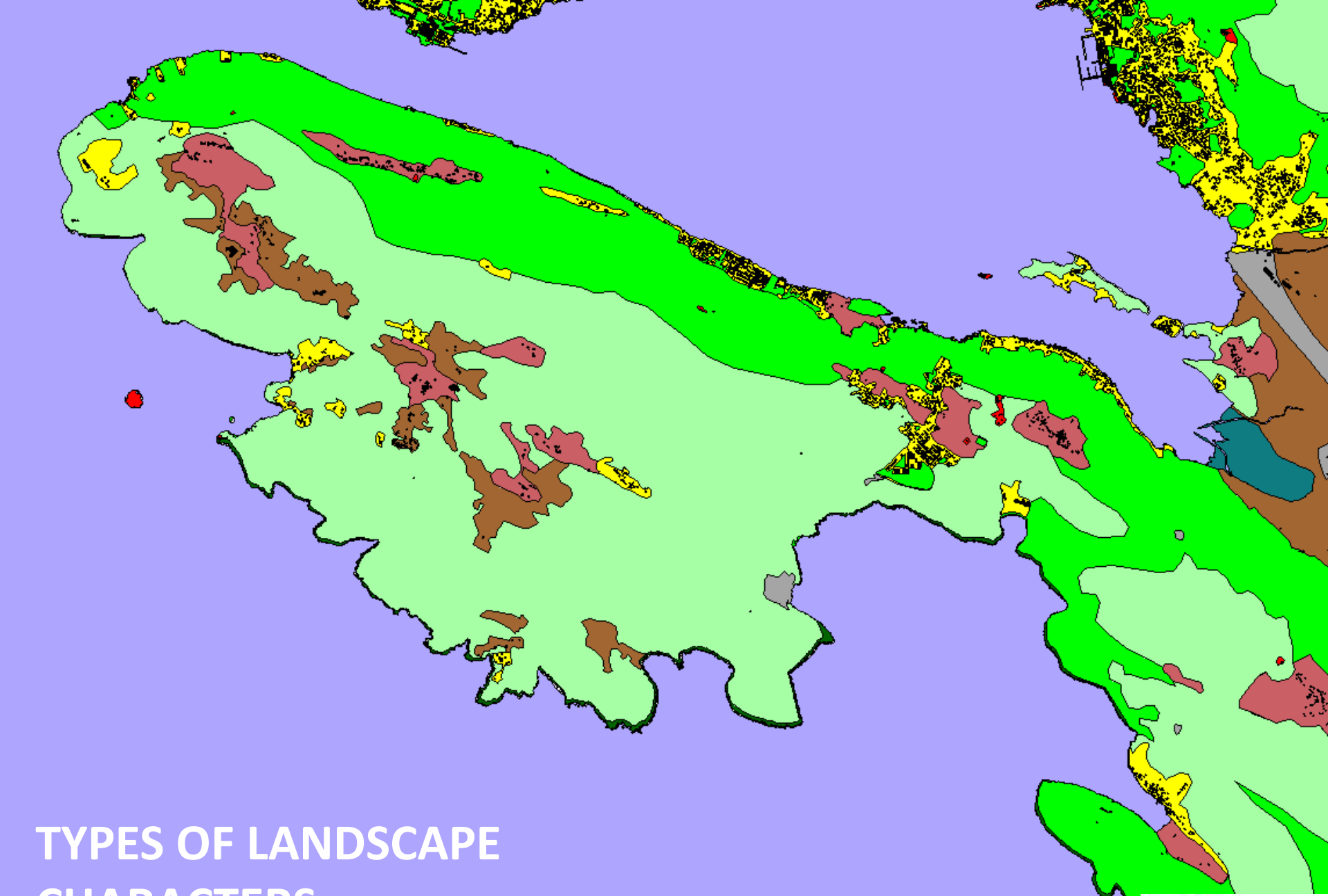
SOCIO-ECONOMICS

GOVERNANCE

DESCRIPTION

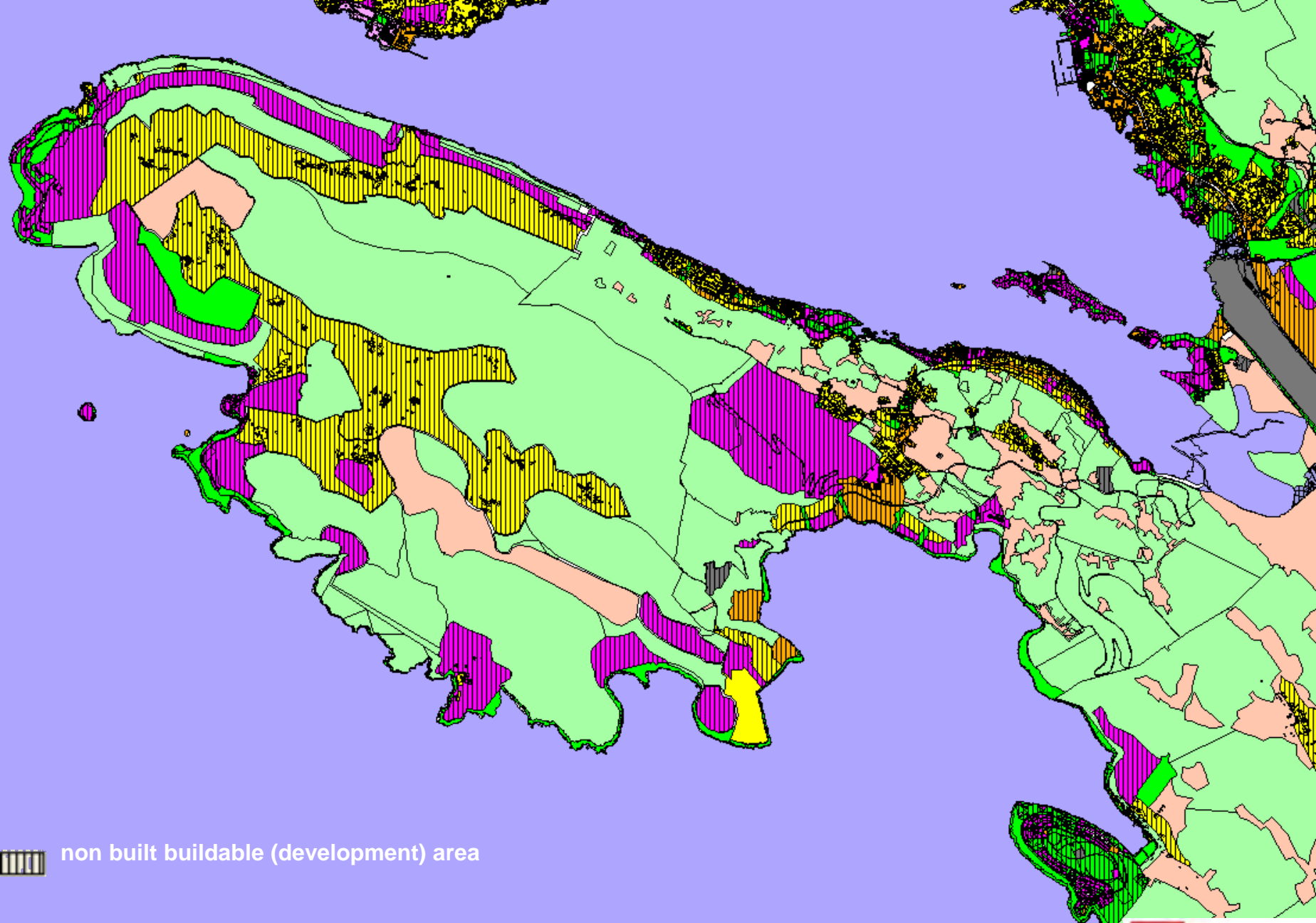
GENERAL VULNERABILITY
ASSESSMENT (WITH
POLLUTION)

DETAILED VULNERABILITY
ASSESSMENT (NARROW
COASTAL ZONE)



TYPES OF LANDSCAPE CHARACTERS

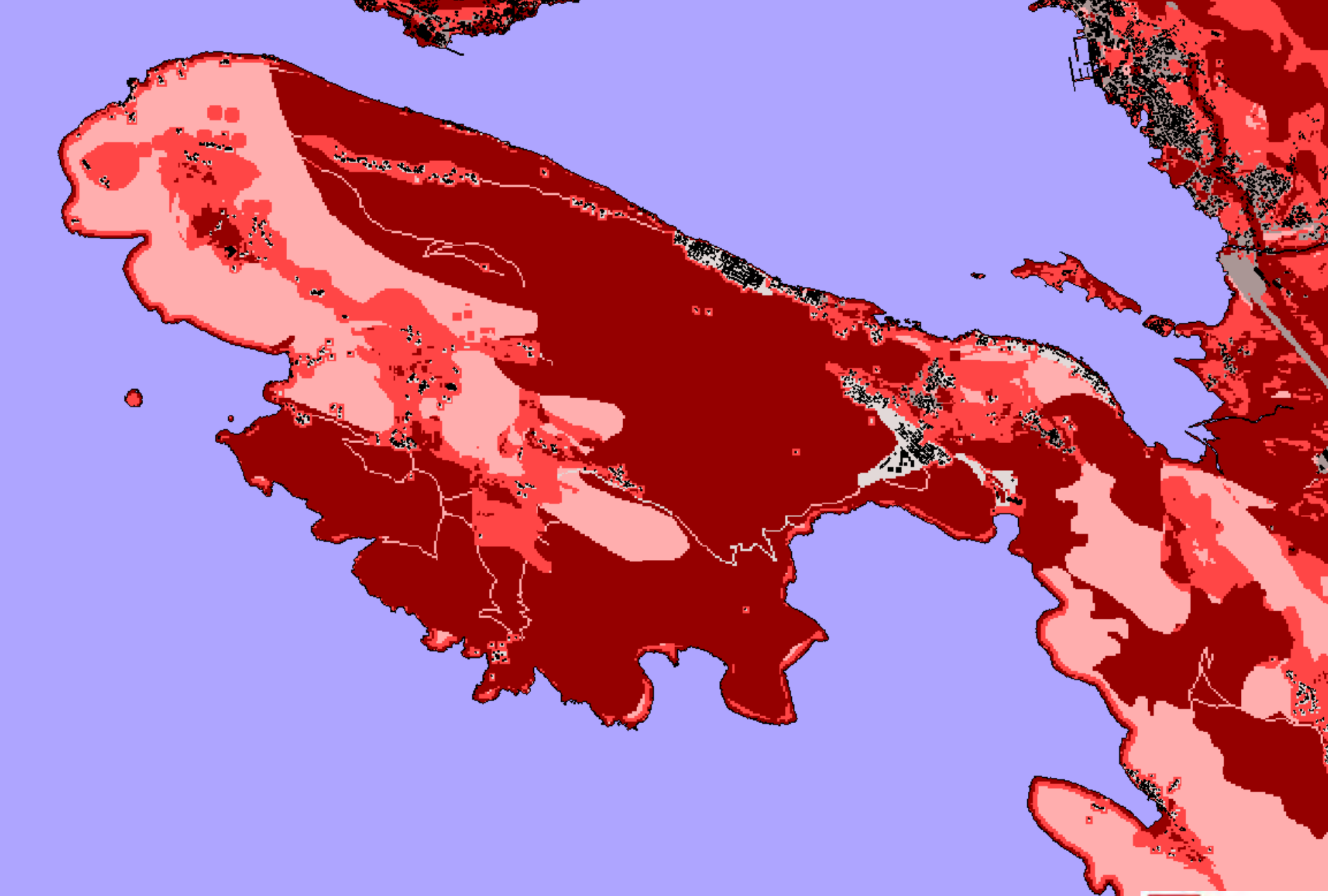




 non built buildable (development) area

(NON) BUILT ASSESSMENT





VULNERABILITY ASSESSMENT



1. PROTECTED AREAS

2. OPEN SPACES

a) natural areas

b) rural areas

3. SETTLEMENTS

4. OTHER AREAS =

a) buildable (development) areas

out of settlements + b) open areas

OPEN SPACE CONCEPT



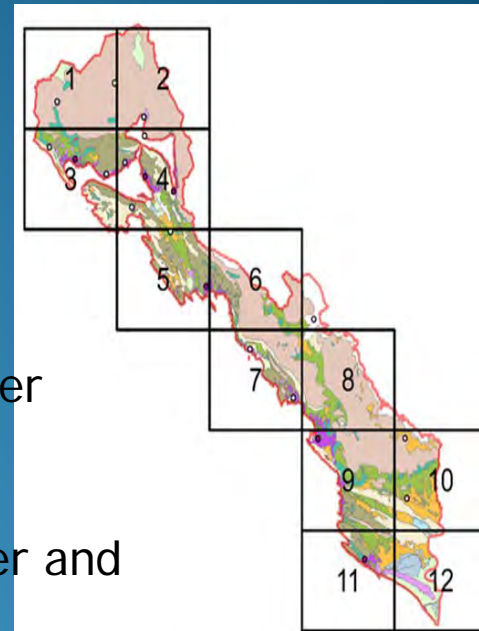
Coastal area of Montenegro

Landscape character assessment- Landscape Character areas



Landscape Character areas are individual and unique geographic areas - landscape units

Landscape character areas have their own individual character and identity

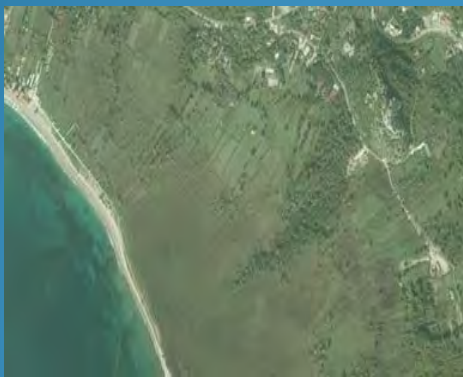
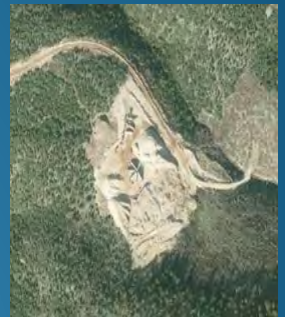
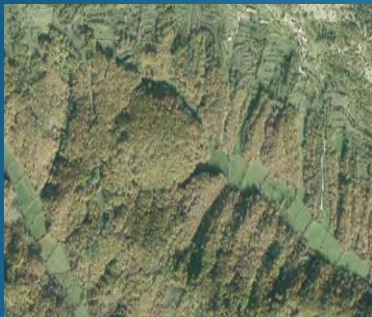
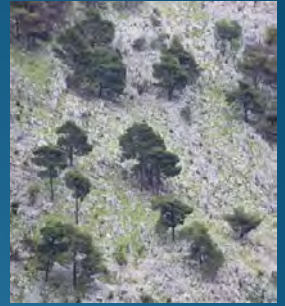
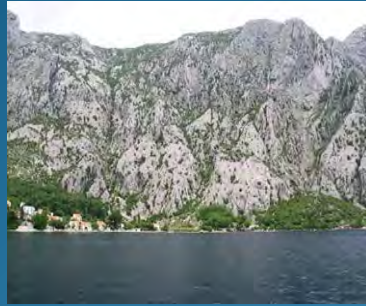


Sector number

4

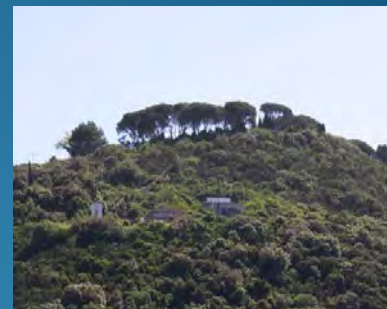
Coastal area of Montenegro

Landscape character assessment – Landscape character types



Coastal area of Montenegro

Landscape character assessment – Landscape character types





Thank you for your attention!

