



LAND-USE PLAN OF A REGION

TRNAVA SELF-GOVERNING REGION

Implementation of European Landscape convention
in Land-use plan of Trnava self-governing region



TRNAVSKÝ
SAMOSPRÁVNÝ
KRAJ



March 2013

TRNAVA SELF-GOVERNING REGION / TSR



location



Trnava self-governing region is from year 2011 preparing new land-use plan of region

Trnava self-governing region is the first member of REPEC-ENELC (European Network of Local and Regional Authorities for the Implementation of the European Landscape Convention) from Slovakia



TRNAVA SELF-GOVERNING REGION – BASIC CHARACTERISTICS

- Number of inhabitants** – 555 509 (31.12.2011) (10,36 % of whole Slovakia)
Area – 4 146 km² (8,5 % of Slovakia)
Residential density – 134 inhabitants/km² (31.12.2011)
- Altitude** – the lowest point – 108,7 m n. m. (cadastral area Okoč, locality Veľký Sek)
Altitude – the highest point – 768,0 m n. m. (cadastral area Buková, Záruby, Malé Karpaty)
- Share of agricultural land** (from gross area of Trnava region – **69,84 %**)
Share arable land from gross area of Trnava region – **62,61 %**
Share forest land from gross area of Trnava region – **15,74 %**
- Protected water utilization area Žitný ostrov** – 10 bilions m³ high-quality drinking water
– underground area of 1 400 km²





SPATIAL/LAND-USE PLANNING IN SLOVAKIA

Act on Land-use Planning and Building Order (the Building Act)

BASIC TOOLS IN SPATIAL/LAND-USE PLANNING

LAND-USE PLANNING MATERIALS

- verify the intentions in the territory, non-binding character

LAND-USE DOCUMENTATION

- Defining the principles and regulations of spatial arrangement and functional use of land
- approved documentation has binding character

LAND-USE DECISIONS

- Decision on the sitting of a building, on the use of land, on protected part of land, on building enclosure
- issued decisions have binding character

Overall plan for development of the Slovakia
Land-use plan of region
Land-use plan of commune
Land-use plan of zone

CONTENT OF THE LAND-USE DOCUMENTATION



- guiding part
- binding part

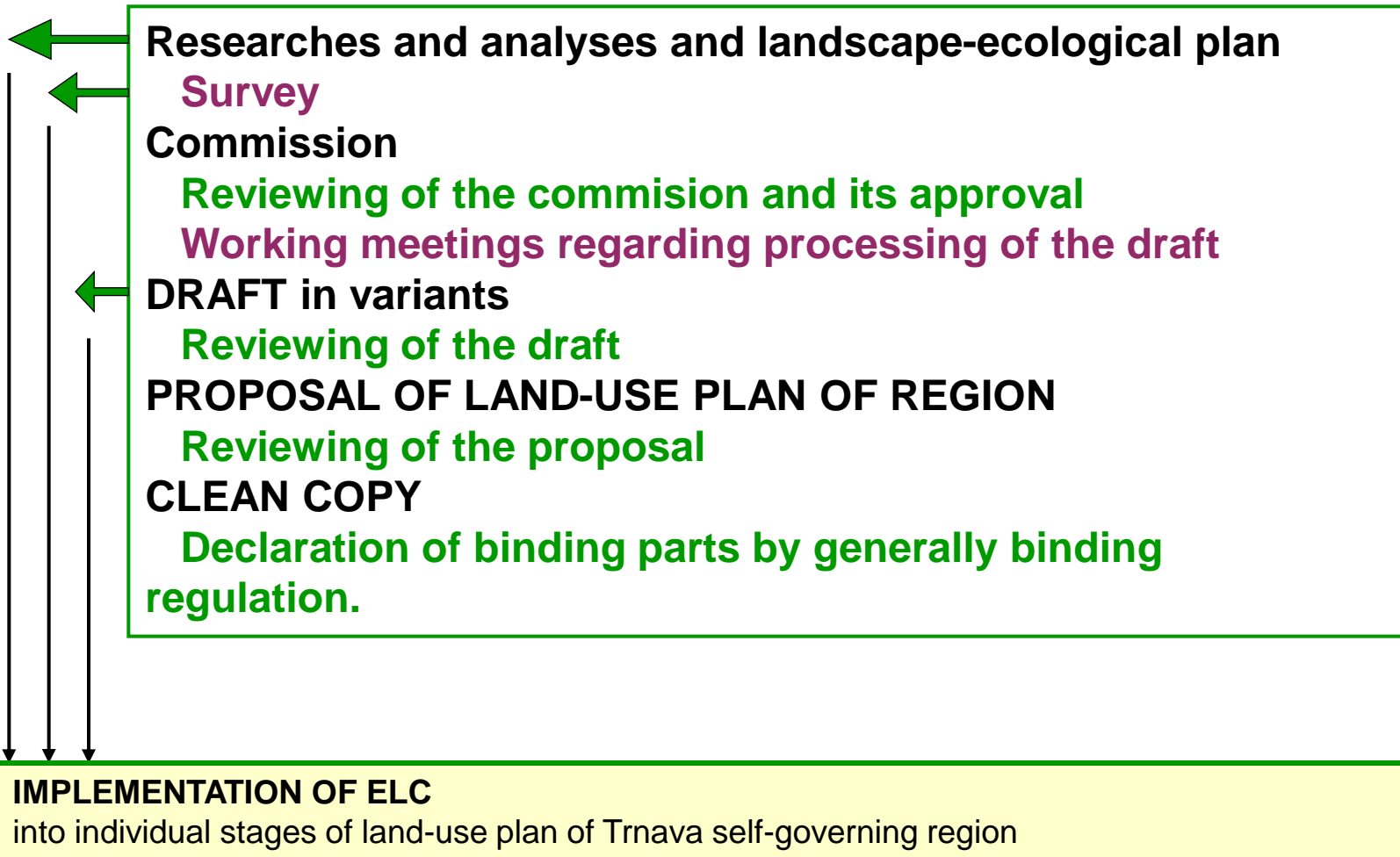
UPDATING OF THE LAND-USE DOCUMENTATION



- supplements or amendments to the land-use planning documentation
- survey of recency at least once in four years time



STAGES OF PROCESSING THE LAND-USE PLAN OF REGION



TERRITORIAL DEVELOPMENT AND LANDSCAPE

EUROPEAN LANDSCAPE CONVENTION

- ❖ The European Landscape Convention (ELC) opened for signature in Florence on 20 October 2000, entered into force in the Slovak Republic on 1 December 2005
- ❖ Implementation of ELC into the Land-use plan of Trnava self-governing is on demand of planning authority - Trnava self-governing region, Trnava, Slovakia)
- ❖ ELC provides specific legislative area for the formation of the territory in the Trnava region on aesthetic principles of landscape composition and principles of active protection of values.

RECEP-ENELC – Trnava self-governing region is the first member of REPEC-ENELC (European Network of Local and Regional Authorities for the Implementation of the European Landscape Convention) from Slovakia



„Landscape has an important public interest role in the cultural, ecological, environmental and social fields, and constitutes a resource favourable to economic activity and whose protection, management and planning can contribute to job creation“

Preamble of European landscape convention, 20.10.2000





EUROPEAN LANDSCAPE CONVENTION

PRINCIPLES OF CONVENTION IN LANDSCAPE ASSESSMENT

- ❖ landscape is seen as an area „*as perceived by people*,“ literally:
„no people - no landscape“

ASSETS OF LANDSCAPE – Trnava self-governing region

❖ Cultural-historical heritage

❖ Natural heritage

- valuable nature areas protected and unprotected
- nature resources – underground sources of drinking water (cca 10 mld m³)
- geothermal, mineral and healing water resources
- the most productive and highly productive arable land, vineyards

❖ sport and recreation and residential potential of area

❖ Unique panoramic nature sceneries -mountain landscape of Malé Karpaty mountains

Areas of interventions of ELC

- Territorial protection of underground drinking water resources
- Territorial protection of protection of the most valuable agricultural land in Majority of towns and municipalities in Trnava self-governing region



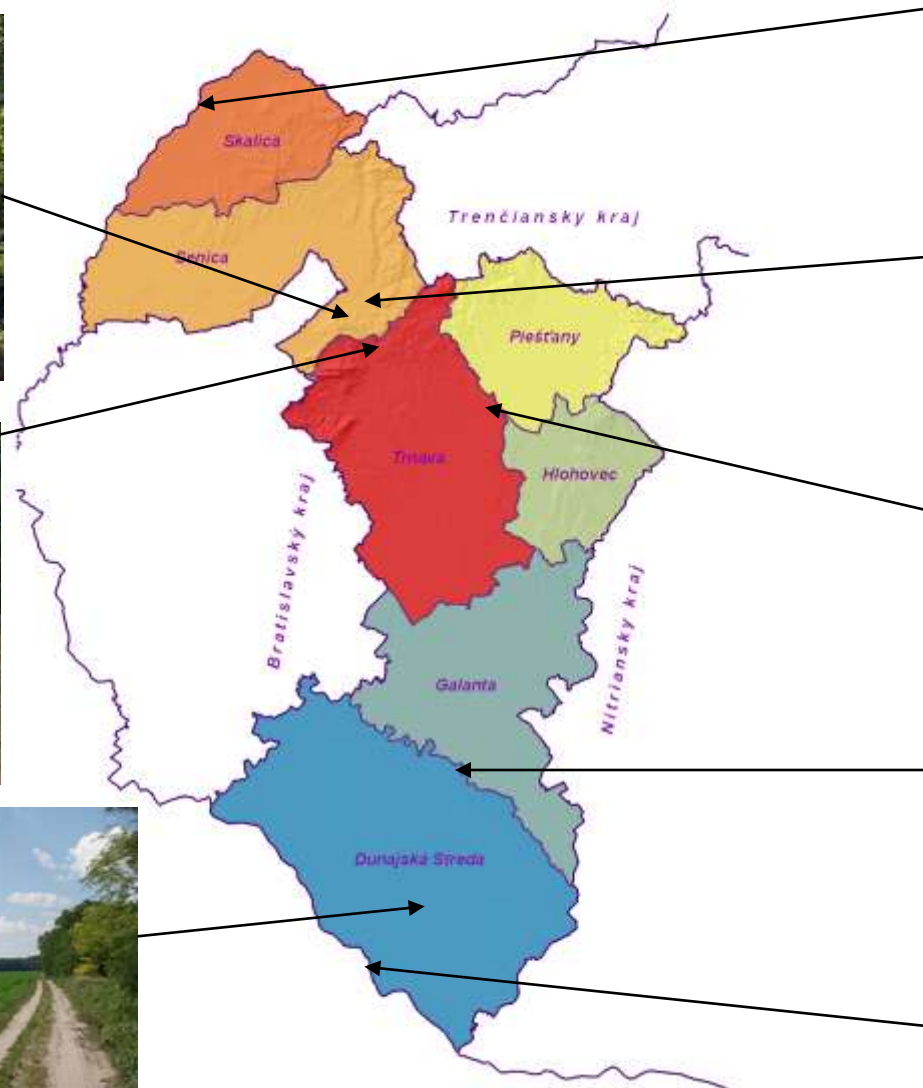
EUROPEAN LANDSCAPE CONVENTION



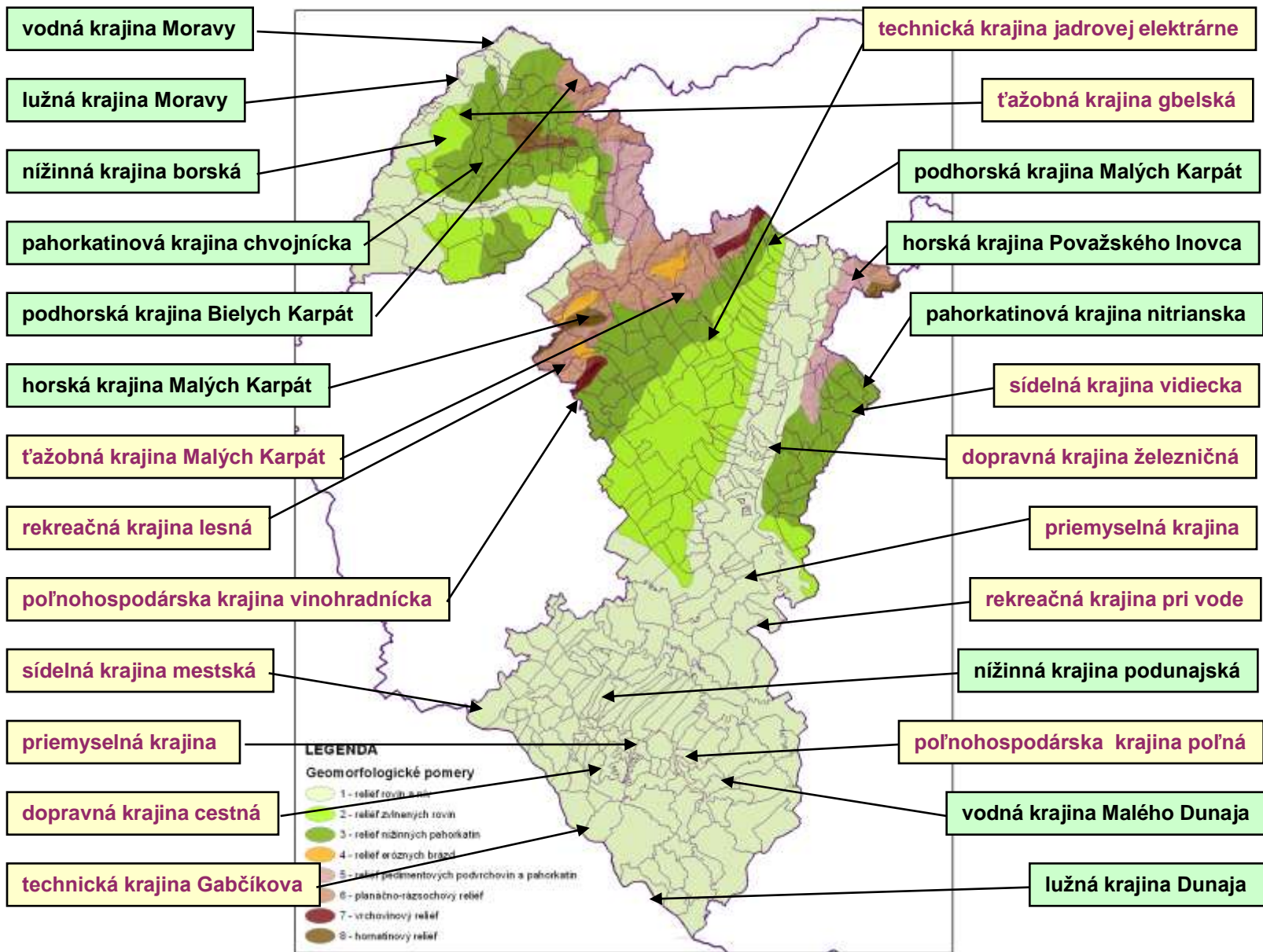
WAY OF IMPLEMENTATION OF ELC

- ❖ DETERMINATION OF BASIS AND OBJECTIVES OF IMPLEMENTATION
- ❖ CHOICE OF BASIC NATURAL CHARACTERISTICS OF LANDSCAPE
- ❖ DRAFT OF LANDSCAPE POTENTIALS AND LAND USE LIMITS
- ❖ CHOOSING A MAJOR CHARACTERISTICS VALUES OF LANDSCAPE
 - Valuable historical and current landscapes – natural and urbanized
- ❖ DRAFT OF BASIC TYPOLOGY OF LANDSCAPE
 - primary, secondary, tertiary and recreational landscapes
- ❖ DRAFT OF PRINCIPLES AND REGULATIVES FOR DIFFERENT TYPES OF LANDSCAPES
 - in binding part of land-use plan of region
- ❖ DRAFT FINAL QUALITY OF LANDSCAPE
 - in the spatial projection of the regional scale
- ❖ PROJECTION INTO MUNICIPALITIES/TOWNS OF TRNAVA SELF-GOVERNING REGION
 - in proposed landscape structures
- ❖ DEFINITION OF STARTING POINTS FOR FUTHER DEVELOPMENT OF MUNICIPALITIES/TOWNS BY
 - positions of the different types of landscape structures
 - positions in settlement structure
 - In accordance with the limits and potential of the area of land use

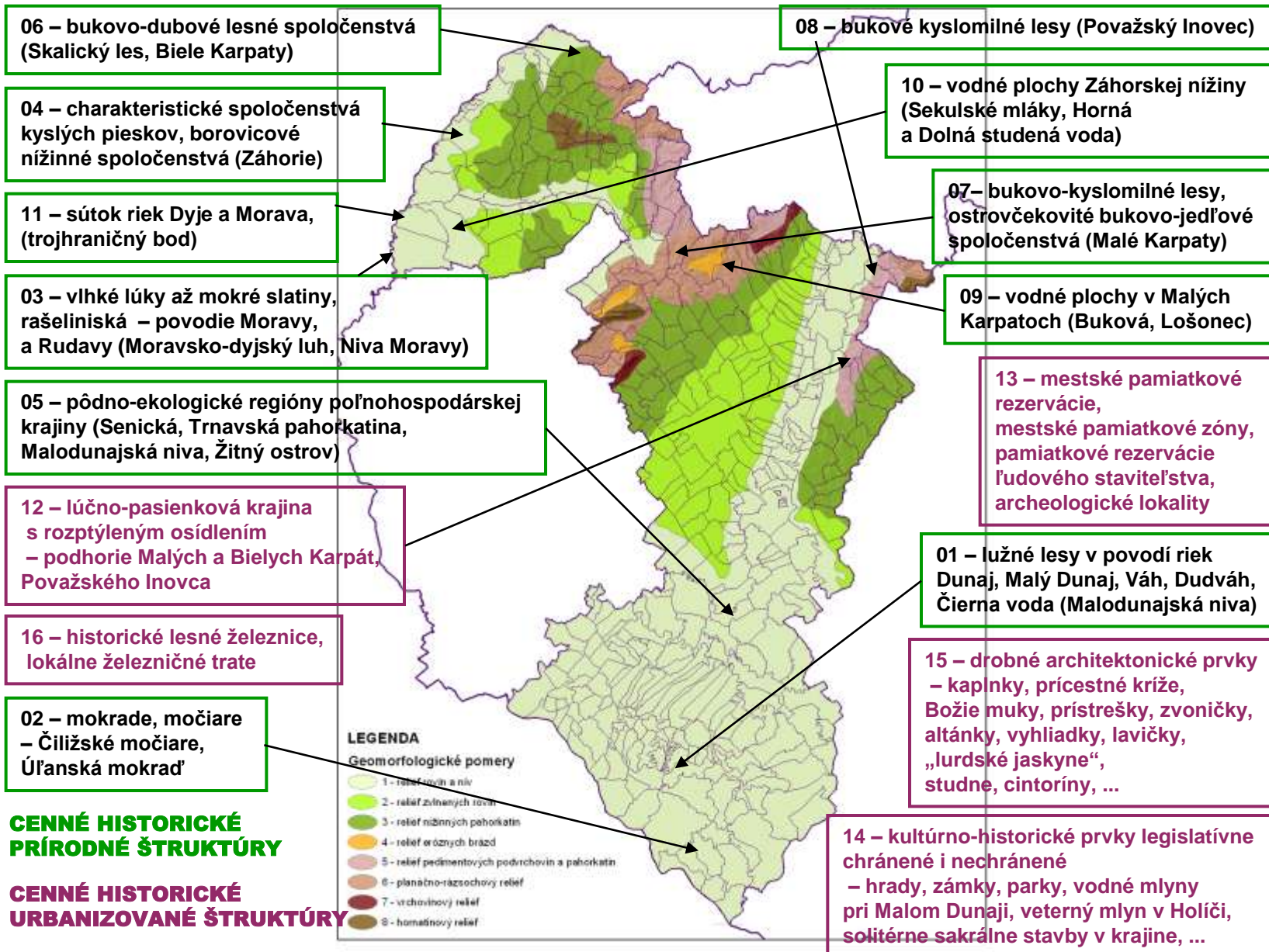
AREA OF TRNAVA SELF-GOVERNING REGION



CHARACTERISTIC LANDSCAPE STRUCTURES



HISTORICAL LANDSCAPE STRUCTURES



**CENNÉ HISTORICKÉ
PRÍRODNÉ ŠTRUKTÚRY**

**CENNÉ HISTORICKÉ
URBANIZOVANÉ ŠTRUKTÚRY**

DETERMINATION OF LANDSCAPE STRUCTURES



PROPOSED TYPES OF LANDSCAPE STRUCTURES

→ **PRIMARY LANDSCAPE STRUCTURE**

- represents landscape subsoil
- is relatively the most stable

→ **SECONDARY LANDSCAPE STRUCTURE,**

- is on the primary layer of landscape structure – represents land-cover
- mosaic structure of various functional areas of natural and urban,
- interconnected with transport routes and waterways
- formation and the quality of urban land is determined in the fundamental way by
- characteristic elements of the primary landscape (biotic and abiotic)

→ **TERTIARY LANDSCAPE STRUCTURE,**

- contains limited elements created by the man
- creates protection of primary and secondary landscape structure,

→ including human protection

RECREATIONAL LANDSCAPE STRUCTURE

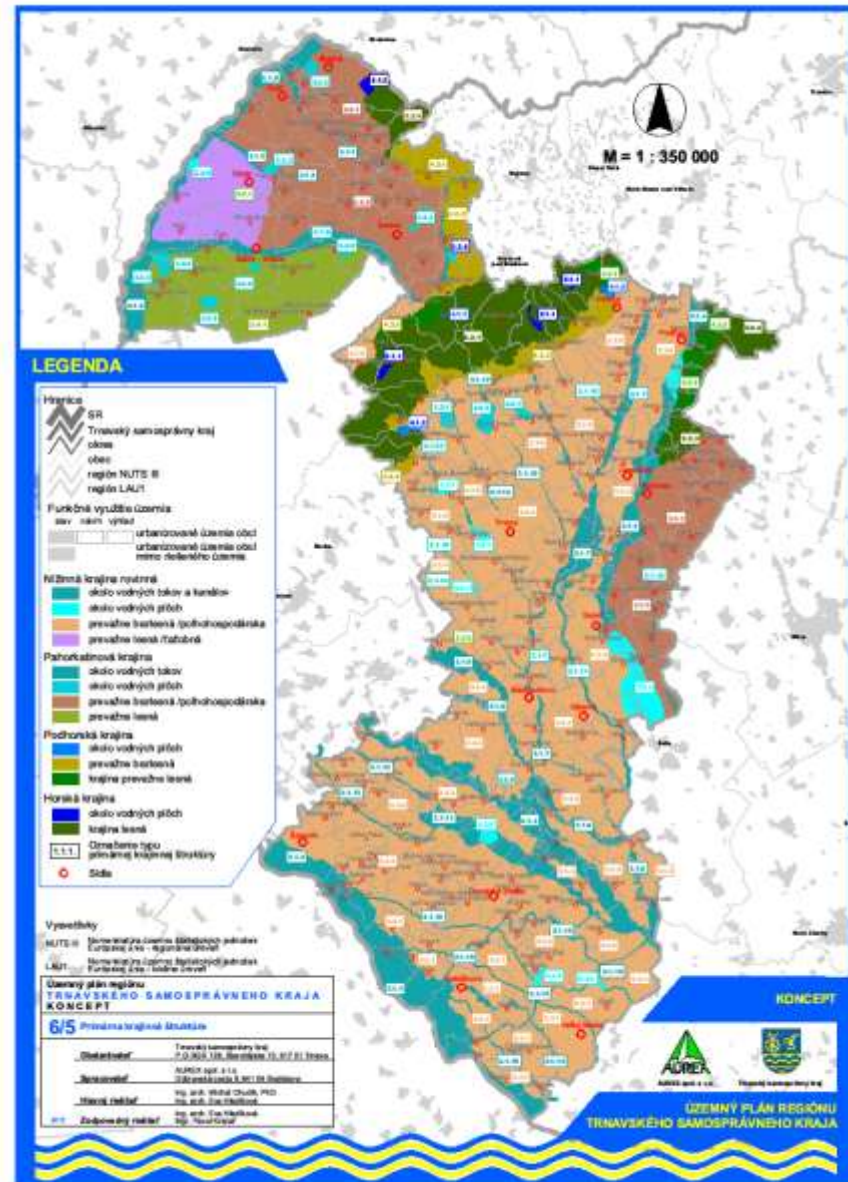
- is on the primary layer of landscape structure
- recreational landscape – tourist destination is practically the whole country
- there are defined therein the most attractive areas - recreational territorial units

→ - areas suitable for the promotion of tourism development / tourism, sport and recreation

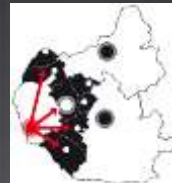
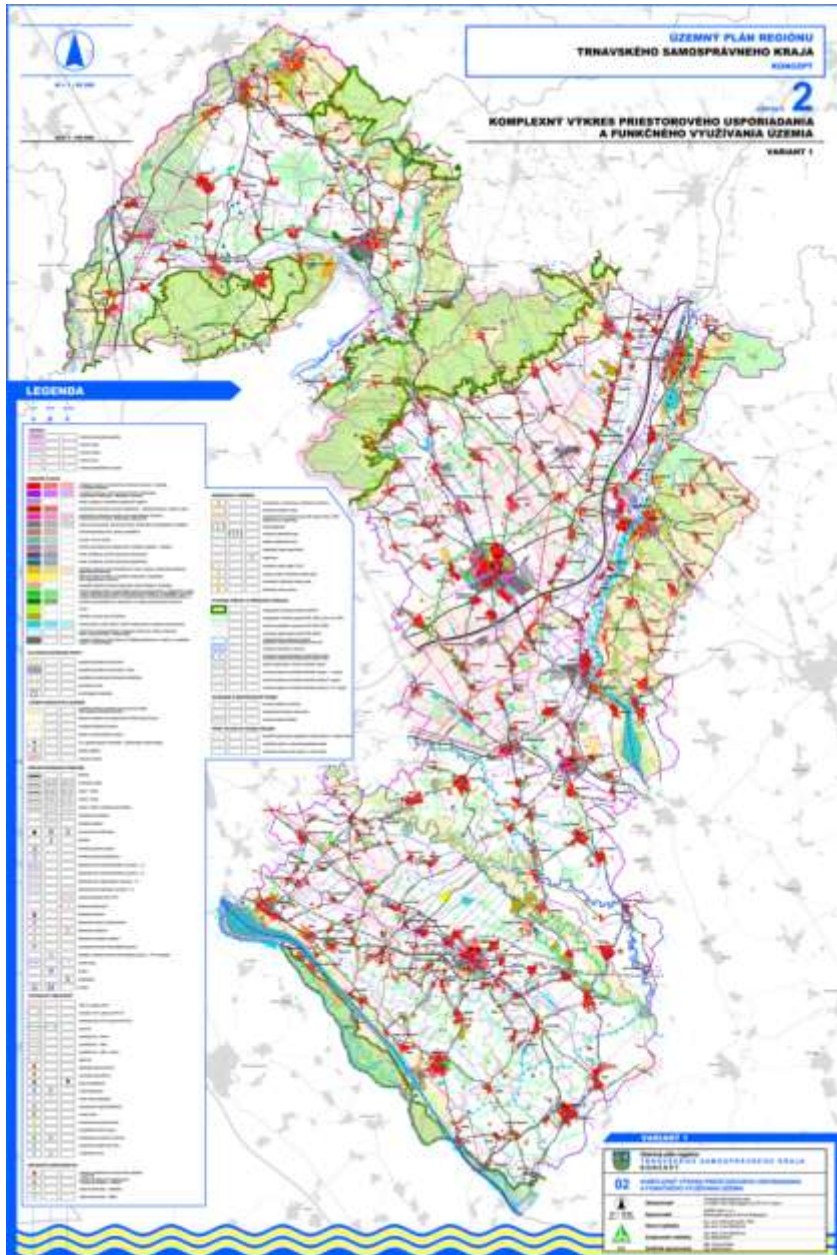
HISTORICAL LANDSCAPE STRUCTURES

- natural and urbanized
- part of the cultural heritage

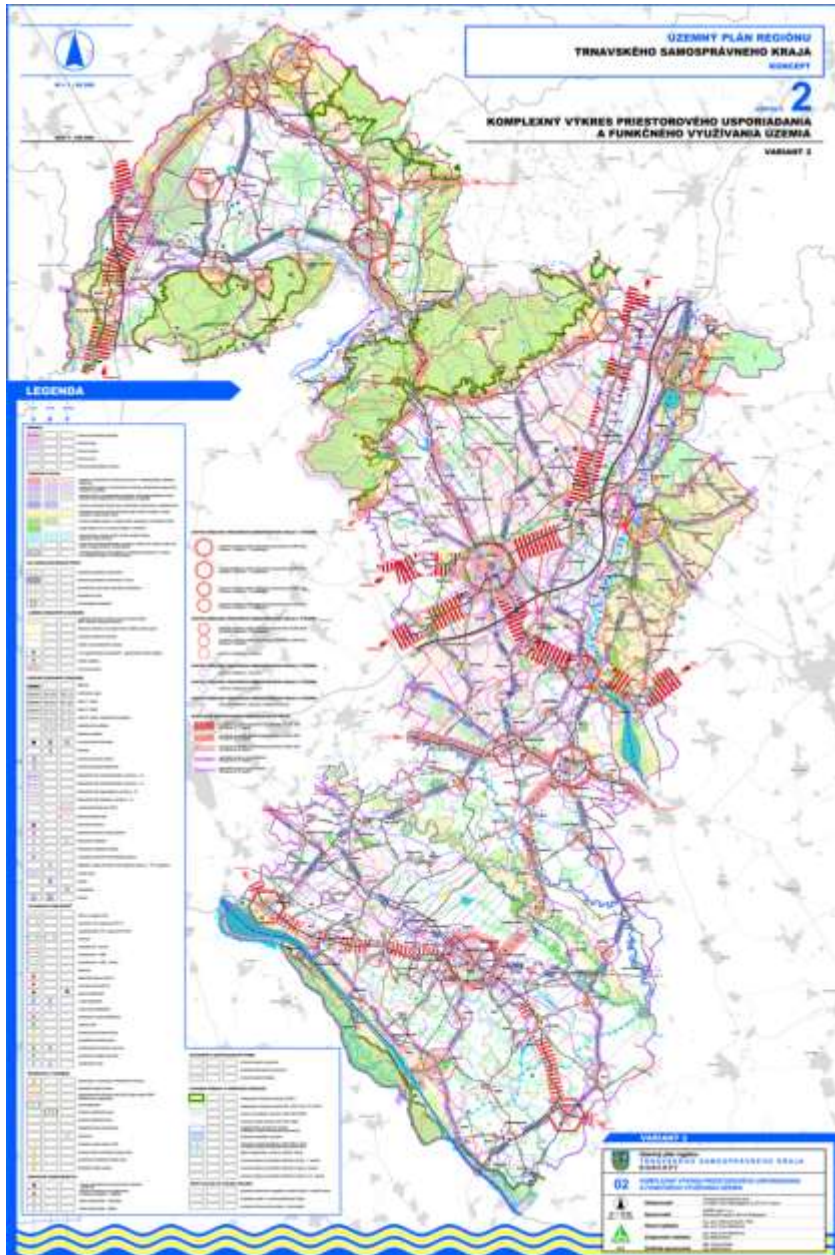
PRIMARY LANDSCAPE STRUCTURE



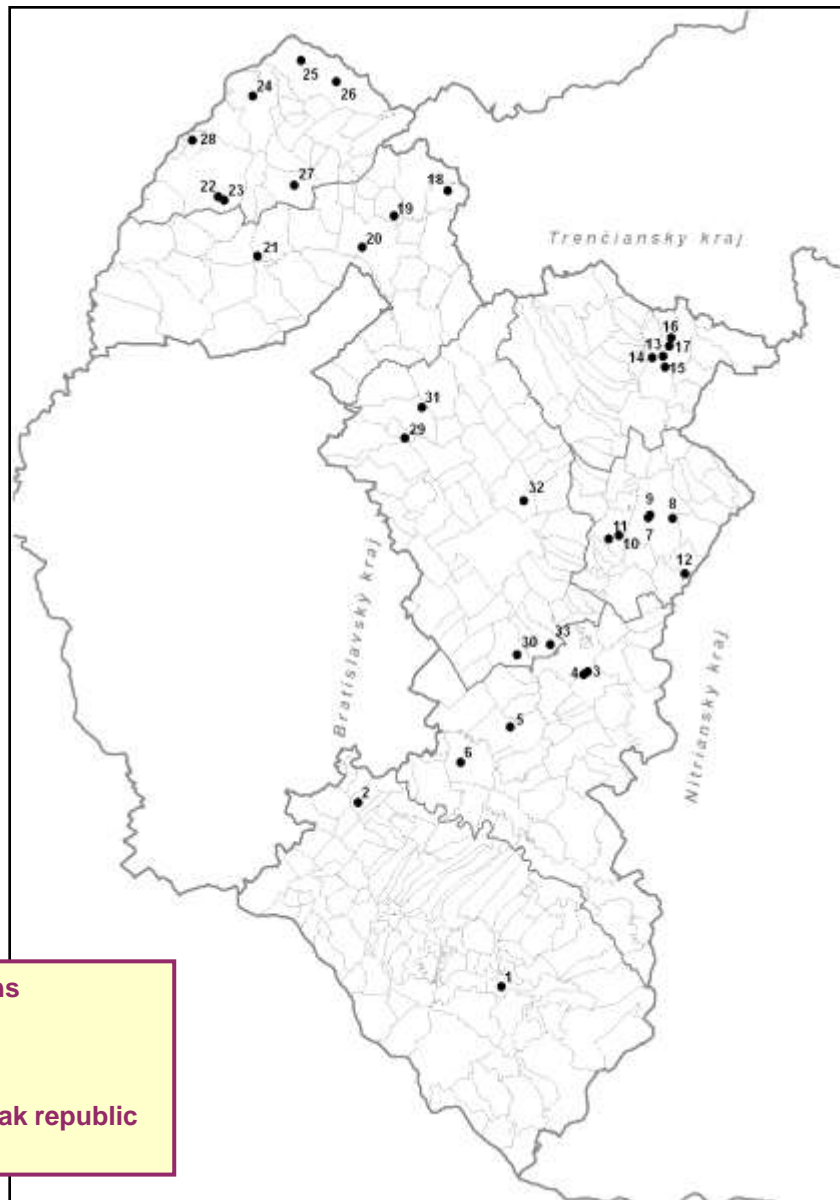
SECUNDARY LANDSCAPE STRUCTURE



SECONDARY LANDSCAPE STRUCTURE

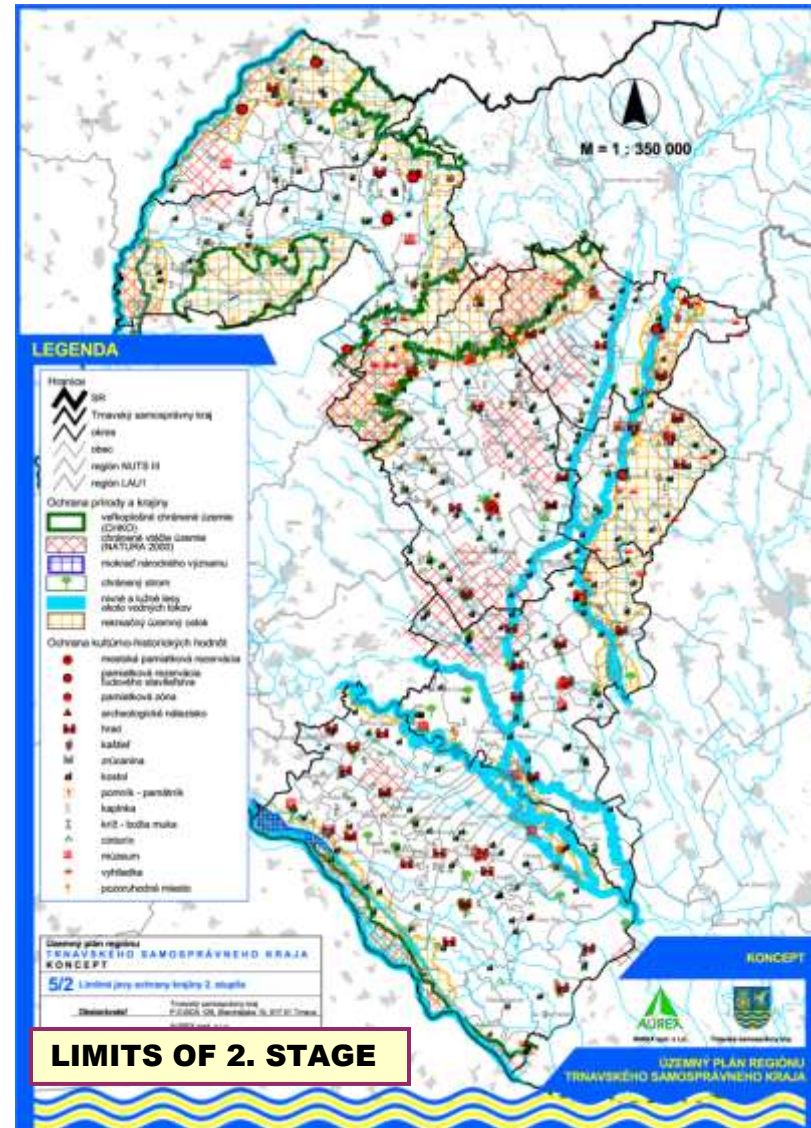
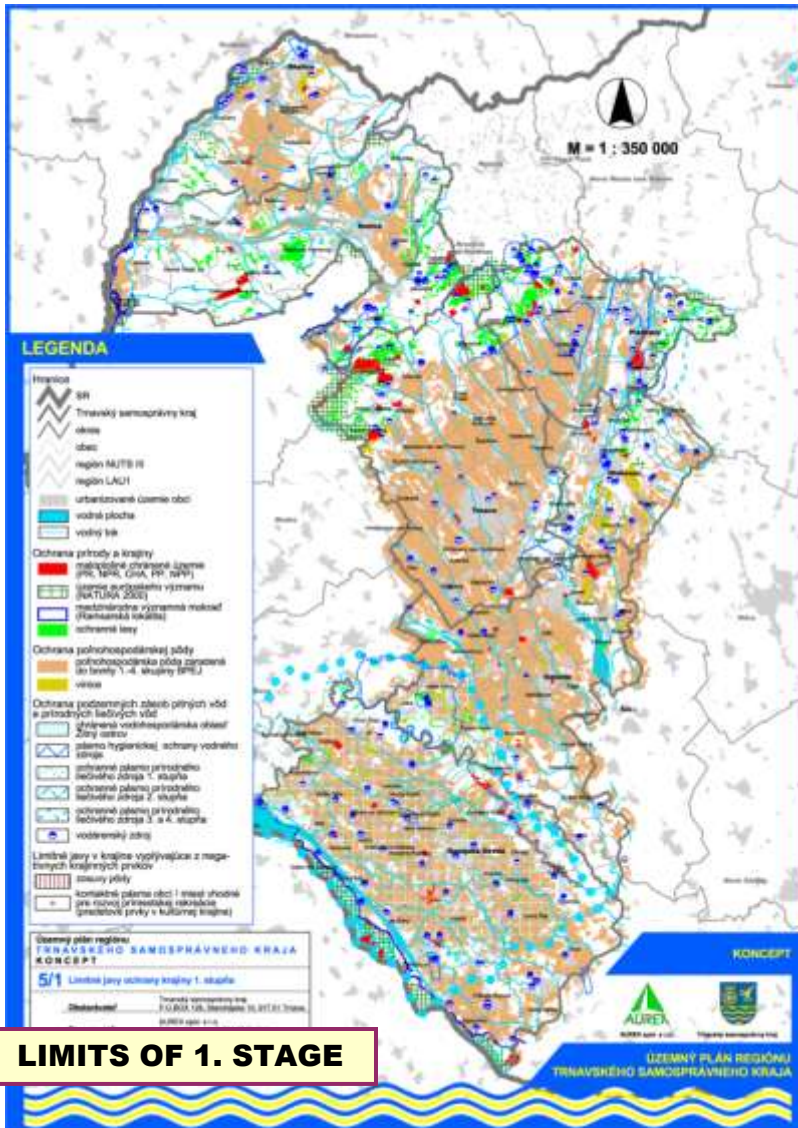


HUGE ENVIRONMENTAL BURDENS IN LANDSCAPE

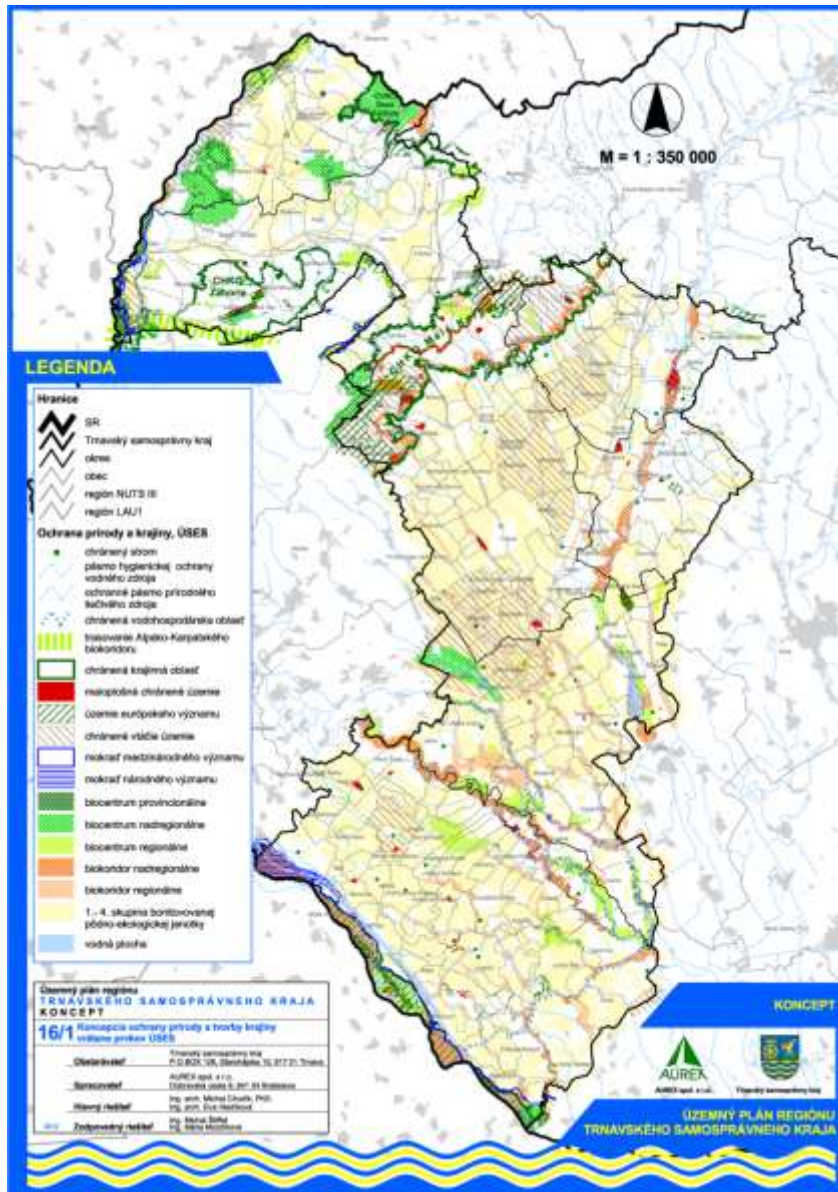


Regional impact assessment study of environmental burdens on the environment for selected regions – Trnava region (contractor: Water resources Slovakia, s.r.o., 2010). In Trnava region were in project Systematic identification of environmental loads of the Slovak republic identified 33 environmental burdens.

LIMITS BY LANDSCAPE DEVELOPMENT



PROTECTED NATURAL AREAS





PROJECTION OF LANDSCAPE STRUCTURES IN AREAS OF MUNICIPALITIES

- ❖ **Defined basic types of landscape structure**
 - **Primary, secondary, tertiary and recreational landscape structure**
- ❖ **Principles and regulations for different types of landscape structure**
 - **In binding land-use plan of region**
- ❖ **Landscape quality objectives**
 - **set in the spatial projection in the regional scale**
- ❖ **Projection of areas in municipalities/cities of Trnava Region**
 - **to the proposed landscape structures**
- ❖ **Defining starting point of further development of municipalities/cities by**
 - **positions of the different types of landscape structures**
 - **positions in settlement structure**
 - **In accordance with the limits and potential of the area of land use**
- ❖ **Determining the principles and regulations of municipalities/cities development on basis of their landscape structure**
 - **will be elaborated in the proposal stage of land-use plan of the region and further elaborated in the final fair copy land-use plan of the region**
 - **projection into tables**
- ❖ **Projection of the principles and regulations in the land-use plans of municipalities/cities in Trnava Region**
 - **into the proposed principles and regulations on residential levels**

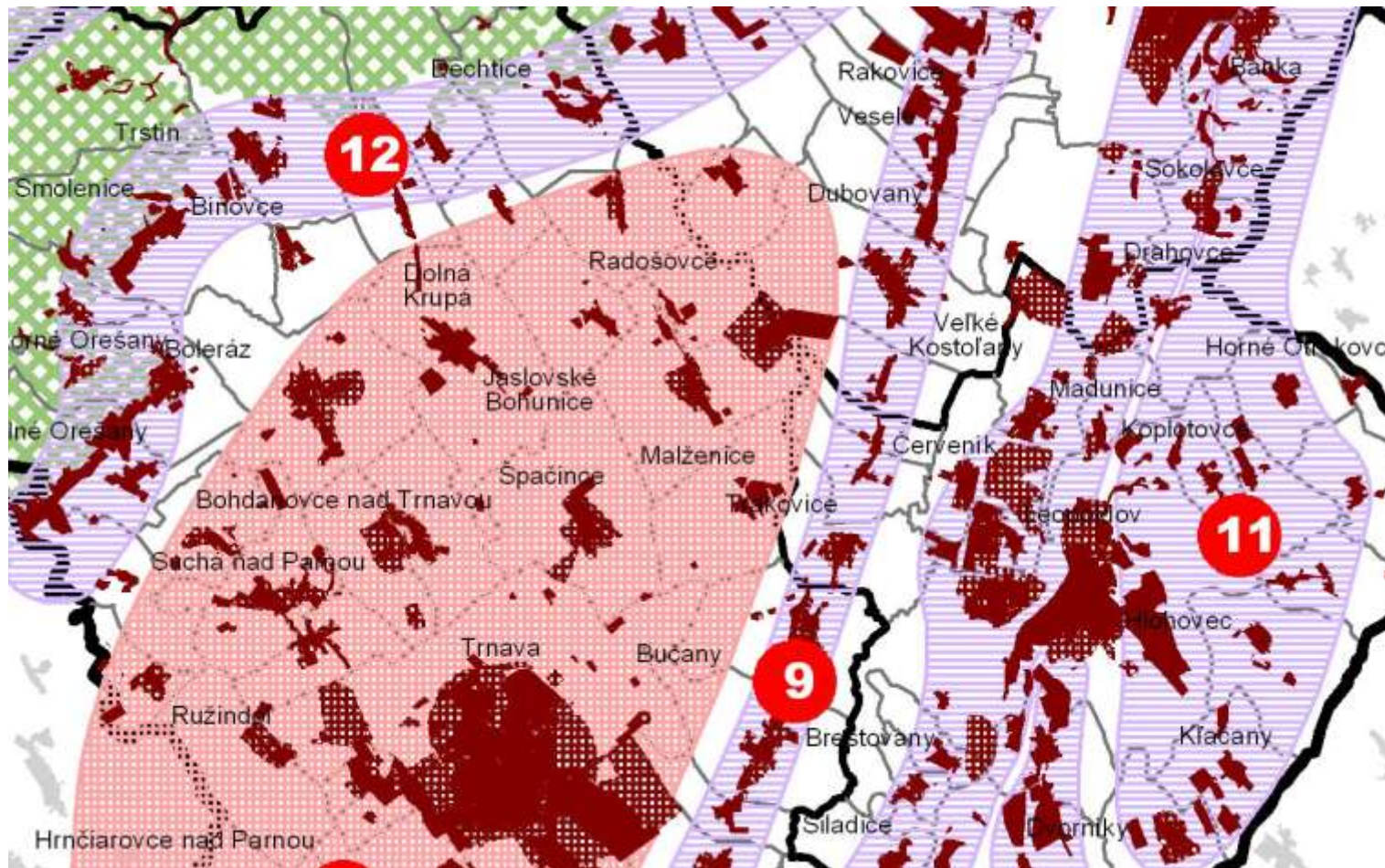
Stage of proposal will be elaborated during year 2013



PROJECTION OF LANDSCAPE STRUCTURES IN AREAS OF MUNICIPALITIES



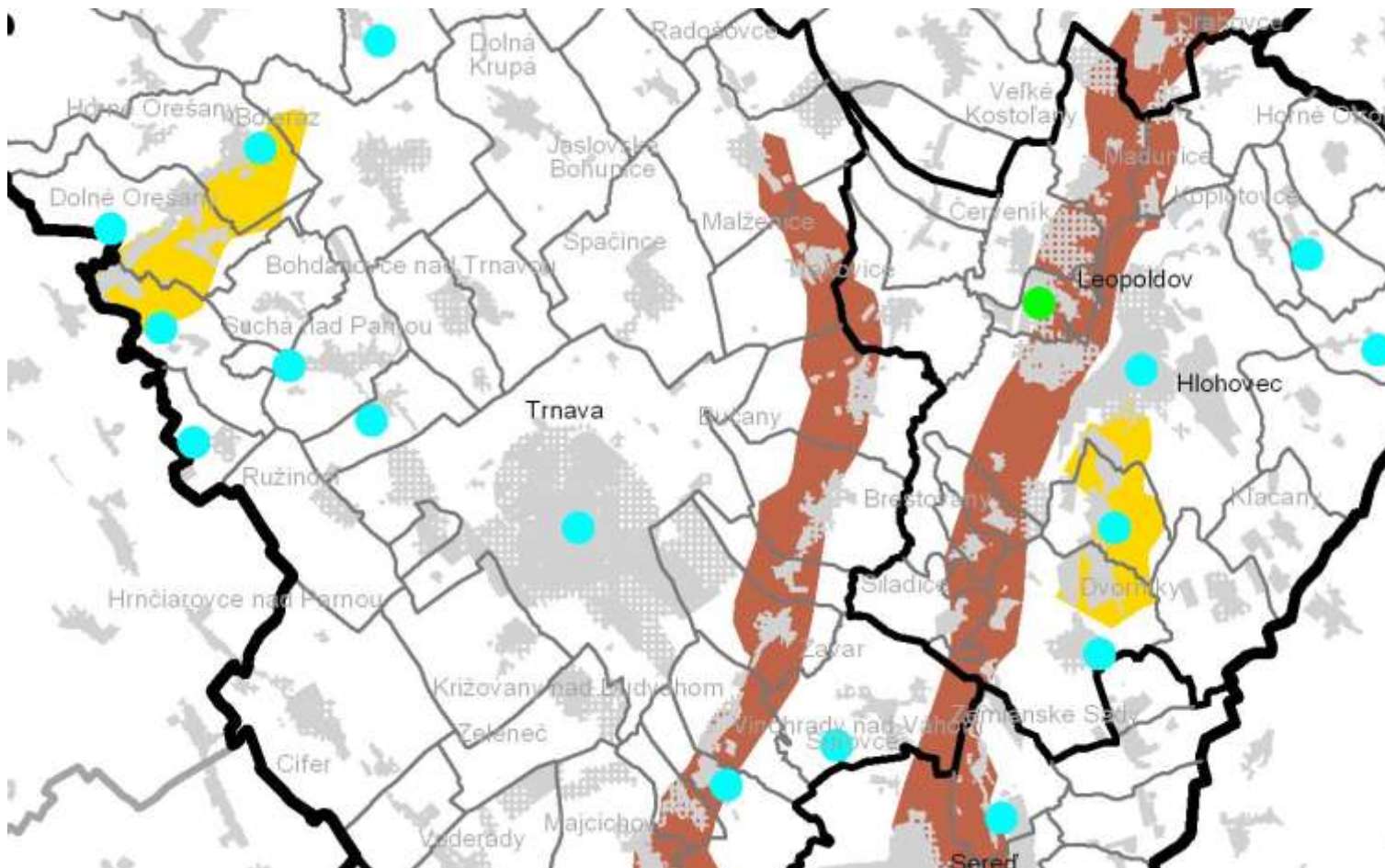
PROJECTION OF SETTLEMENT STRUCTURES INTO MUNICIPALITY AREAS



PROJECTION OF LANDSCAPE STRUCTURES IN AREAS OF MUNICIPALITIES



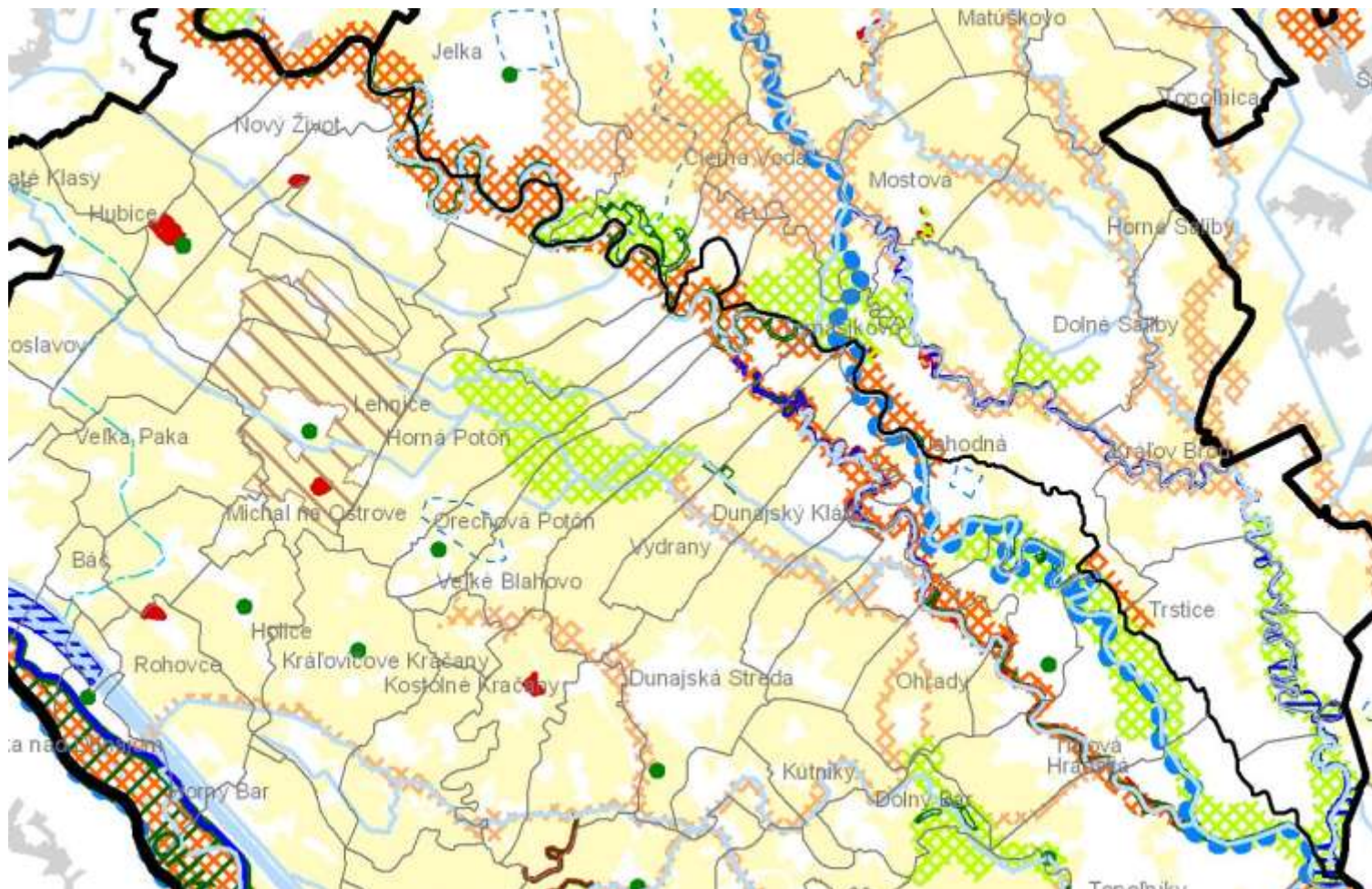
PROJECTION OF TRADITIONAL LANDSCAPE STRUCTURES INTO MUNICIPALITY AREAS



PROJECTION OF LANDSCAPE STRUCTURES IN AREAS OF MUNICIPALITIES



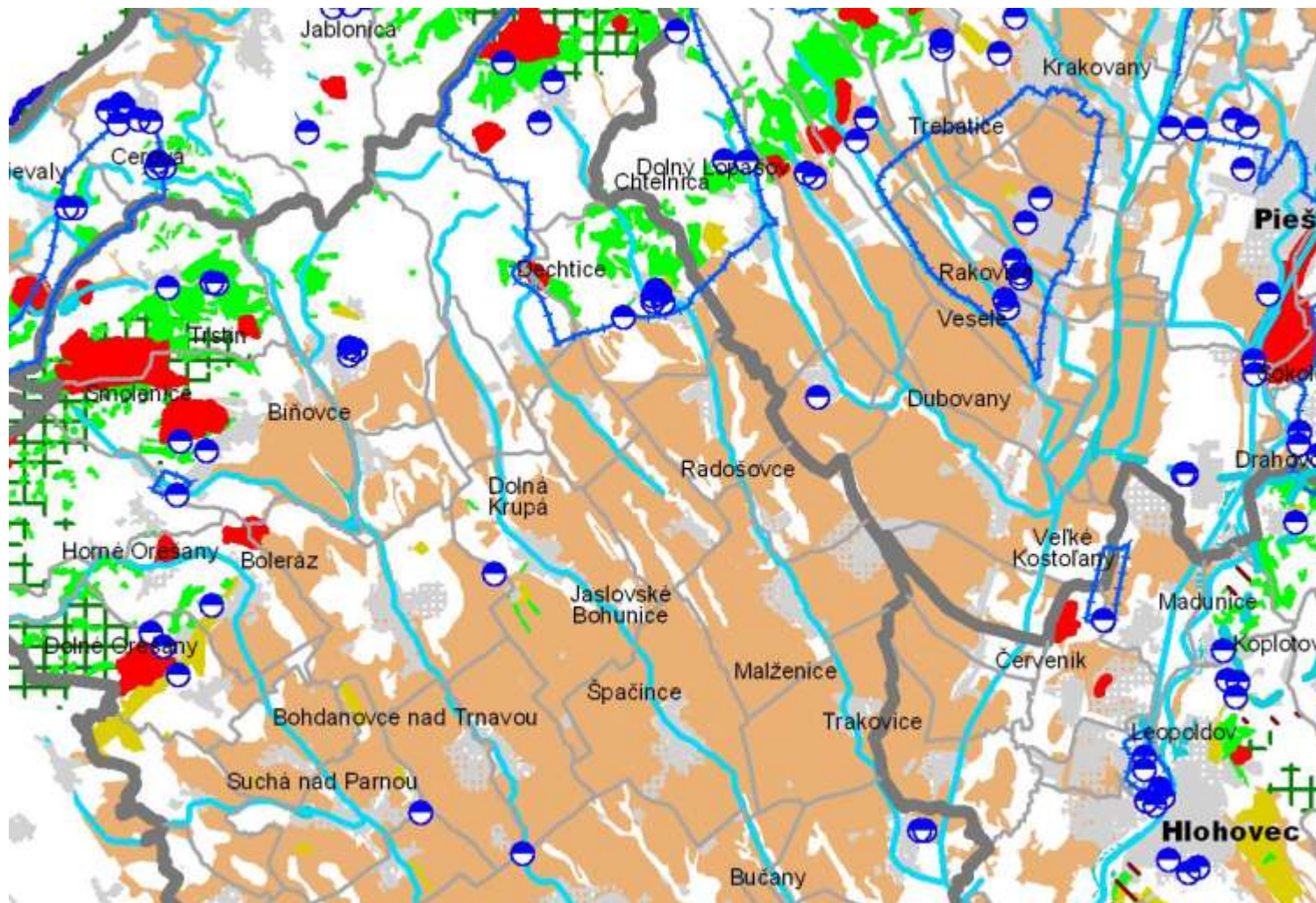
PROJECTION OF NATURAL PROTECTED AREAS IN AREAS OF MUNICIPALITIES



PROJECTION OF LANDSCAPE STRUCTURES IN AREAS OF MUNICIPALITIES



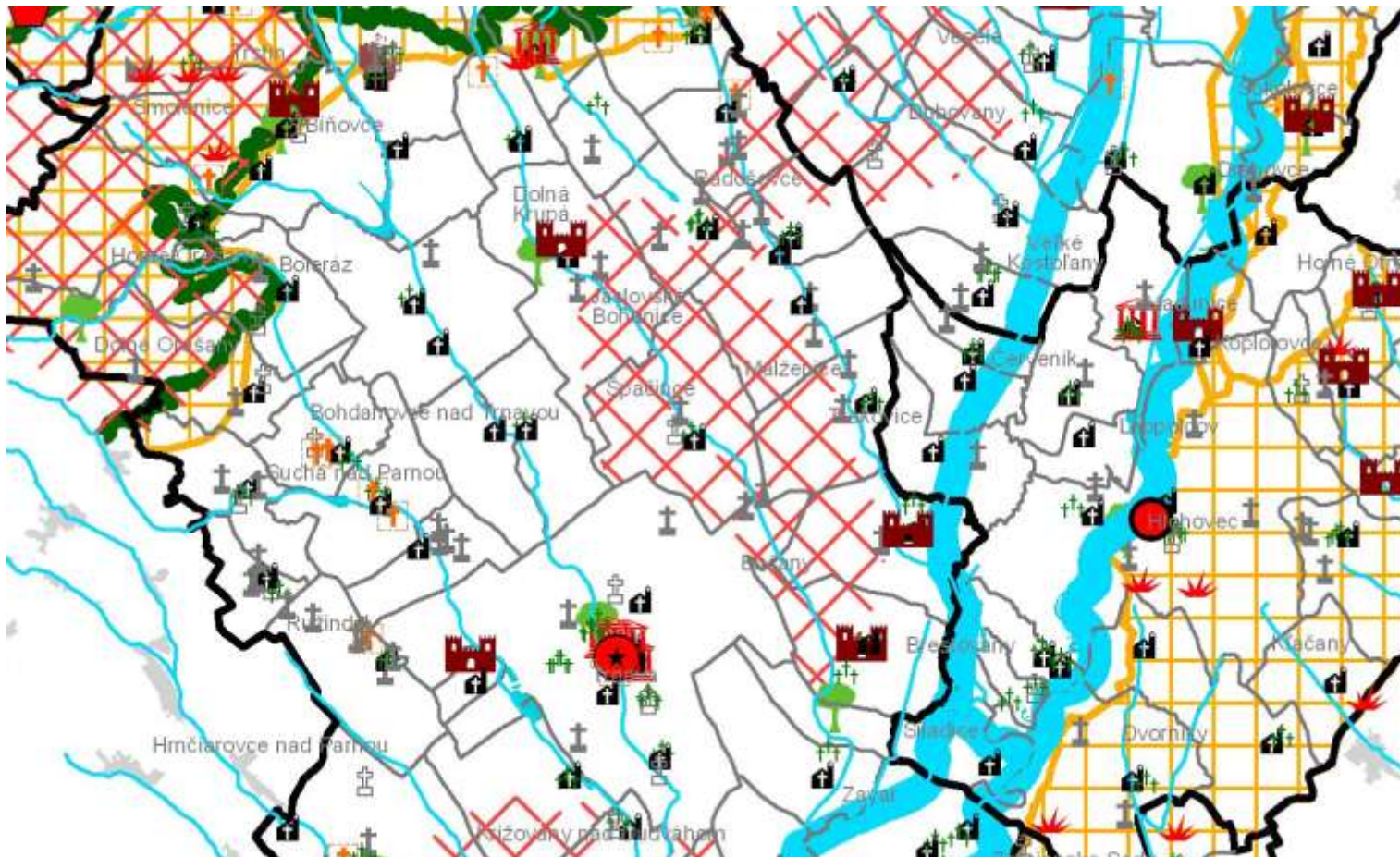
PROJECTION OF LIMITS OF 1. STAGE IN AREAS OF MUNICIPALITIES



PROJECTION OF LANDSCAPE STRUCTURES IN AREAS OF MUNICIPALITIES



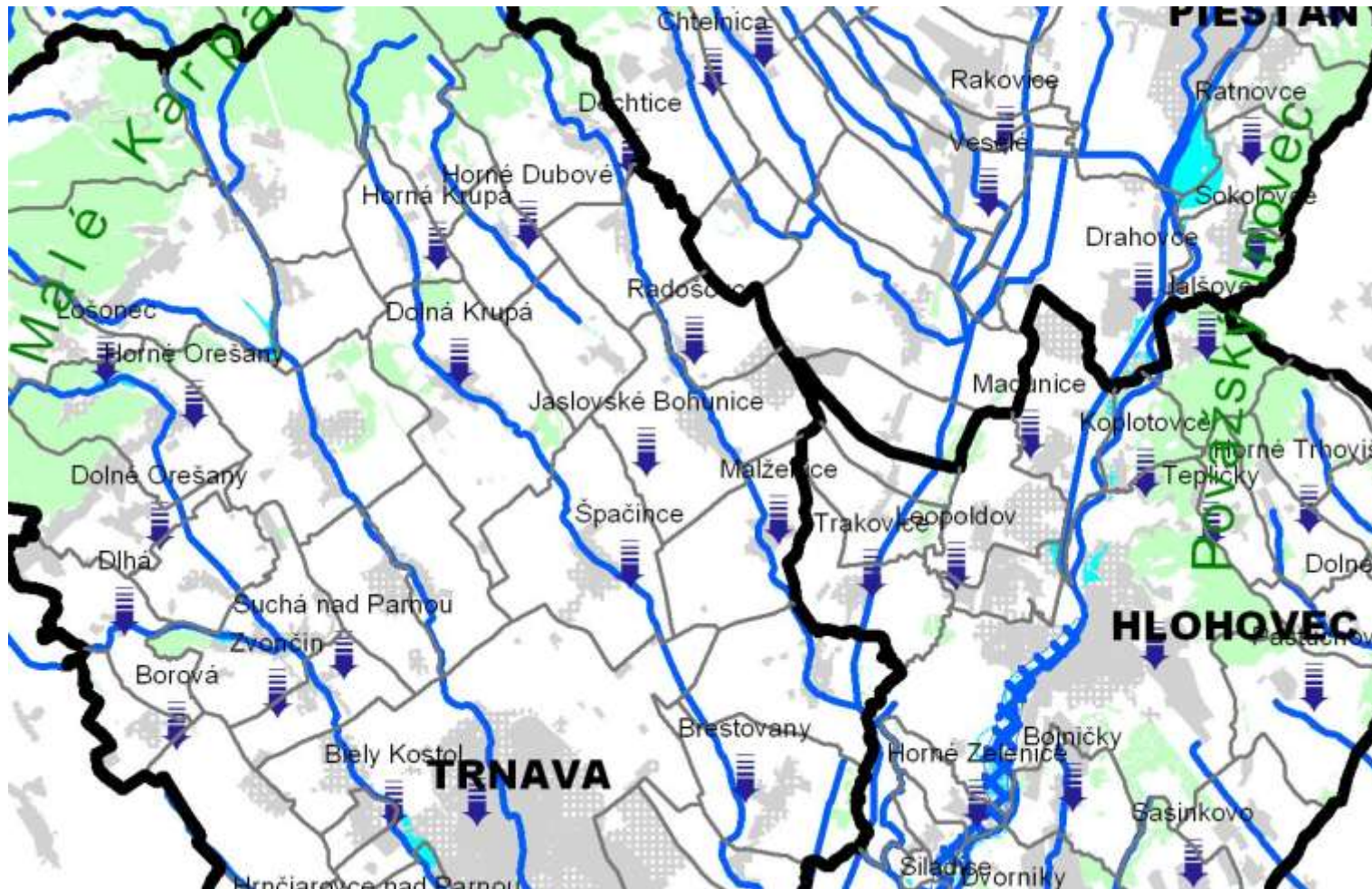
PROJECTION OF LIMITS OF 2. STAGE IN AREAS OF MUNICIPALITIES



PROJECTION OF LANDSCAPE STRUCTURES IN AREAS OF MUNICIPALITIES



PROJECTION OF WATERS, FLOODS AND STORMWATER IN AREAS OF MUNICIPALITIES



PROJECTION OF LANDSCAPE STRUCTURES IN AREAS OF MUNICIPALITIES



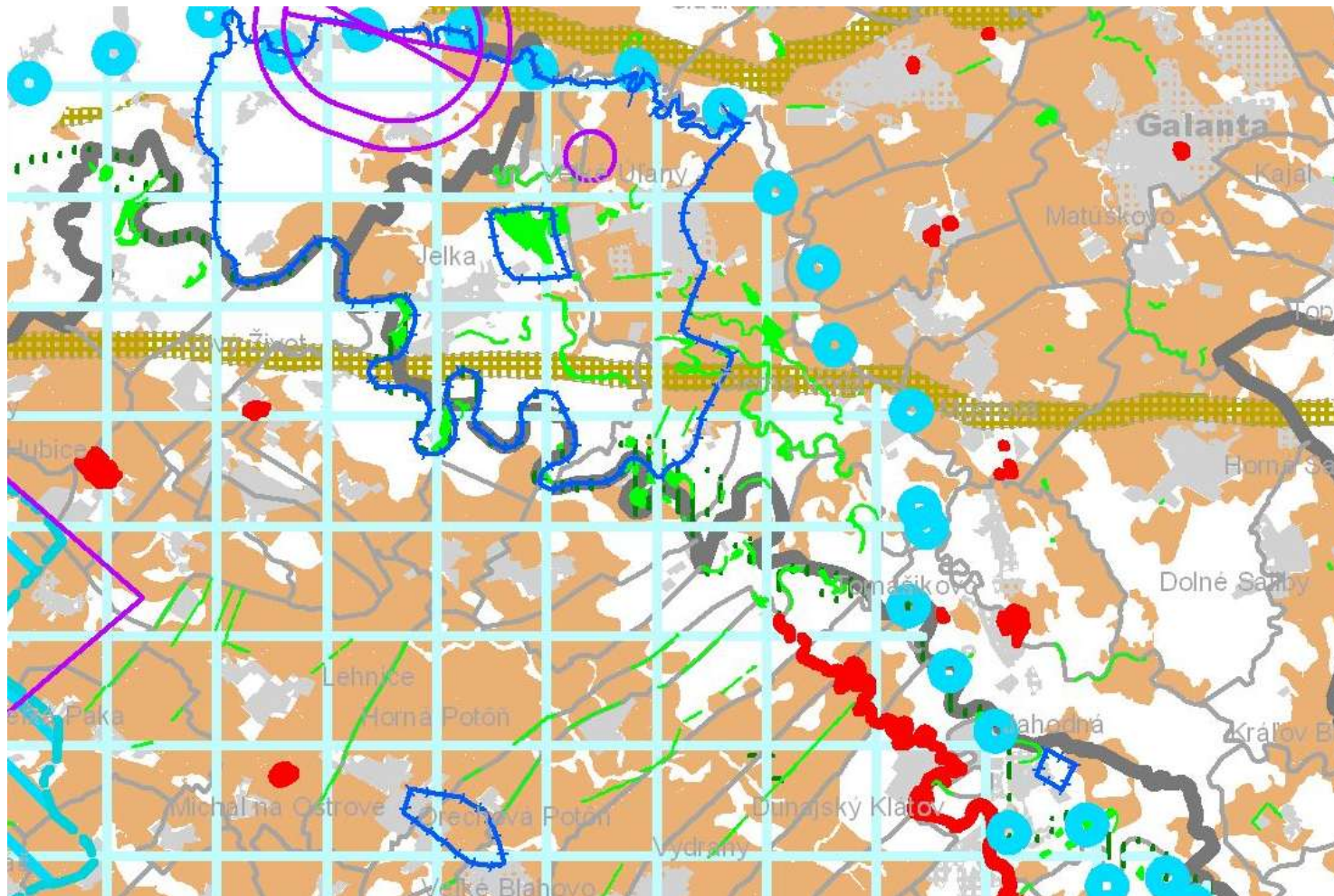
PROJECTION OF PRIMARY LANDSCAPE STRUCTURE IN AREAS OF MUNICIPALITIES



PROJECTION OF LANDSCAPE STRUCTURES IN AREAS OF MUNICIPALITIES



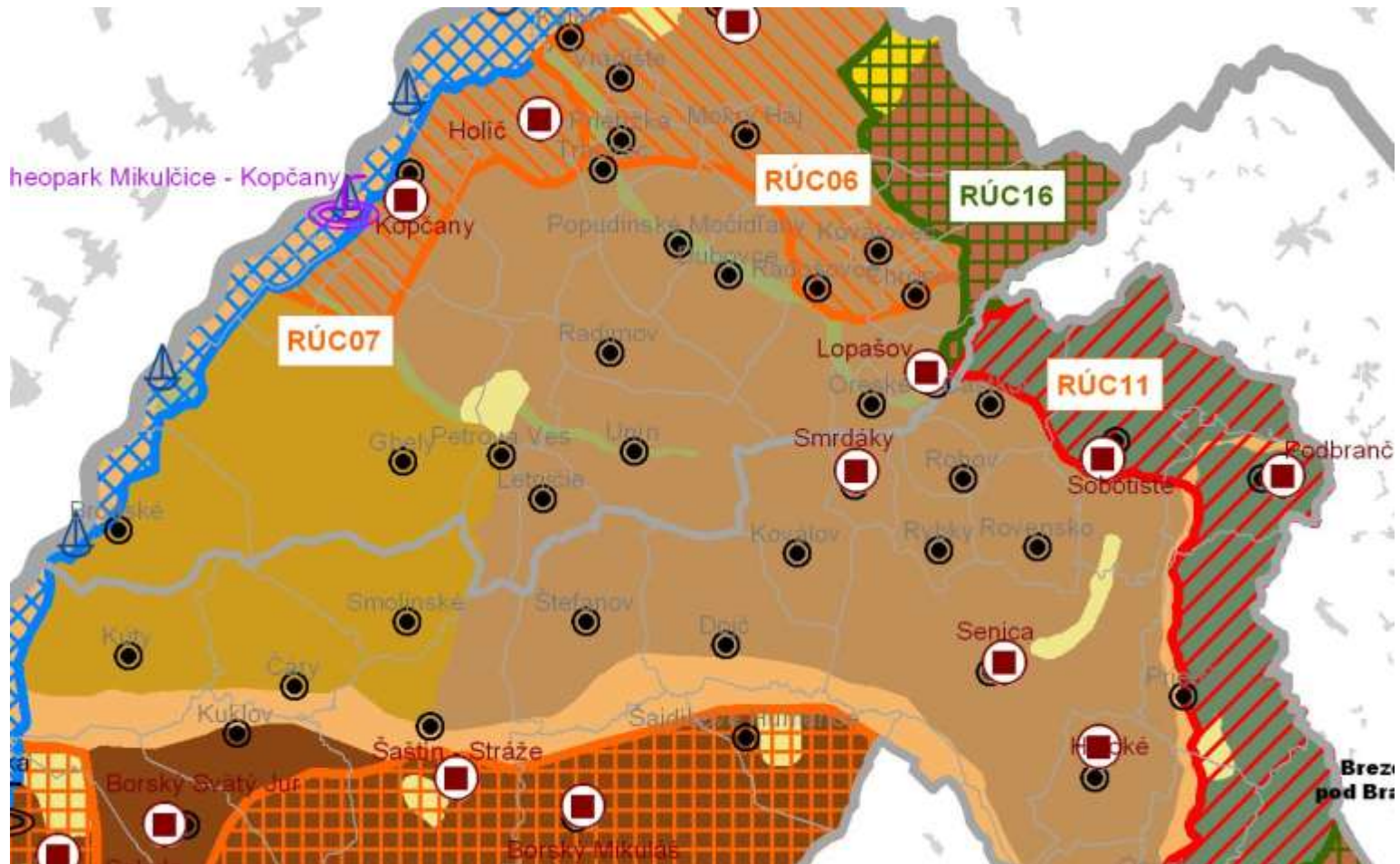
PROJECTION OF TERTIARY LANDSCAPE STRUCTURE IN AREAS OF MUNICIPALITIES



PROJECTION OF LANDSCAPE STRUCTURES IN AREAS OF MUNICIPALITIES



PROJECTION OF RECREATIONAL LANDSCAPE STRUCTURE IN AREAS OF MUNICIPALITIES





THANK YOU FOR YOUR ATTENTION



**TRNAVSKÝ
SAMOSPRÁVNÝ
KRAJ**

