



STÁTNÍ
POZEMKOVÝ
ÚŘAD



LIVING THROUGH THE LANDSCAPE

HEALTHY LANDSCAPE NEED COMMON SENSE

19TH COUNCIL OF EUROPE
MEETING OF THE WORKSHOPS
FOR THE IMPLEMENTATION
OF THE EUROPEAN LANDSCAPE
CONVENTION

Ing. Svatava Maradová, MBA

State Land Office, general director



PART 01

STATE LAND OFFICE

THE IMPLEMENTATION
OF THE EUROPEAN
LANDSCAPE CONVENTION
AT LOCAL LEVEL



STÁTNÍ POZEMKOVÝ ÚŘAD

WHO WE ARE...

- Nationwide jurisdiction State Office
- **A Conceptual creator of landscaping and rural development** by the Land Consolidation
- State agricultural property administrator
- **An expert on determining soil quality parameters** and updating of Bonited soil-ecological unit

Office structure

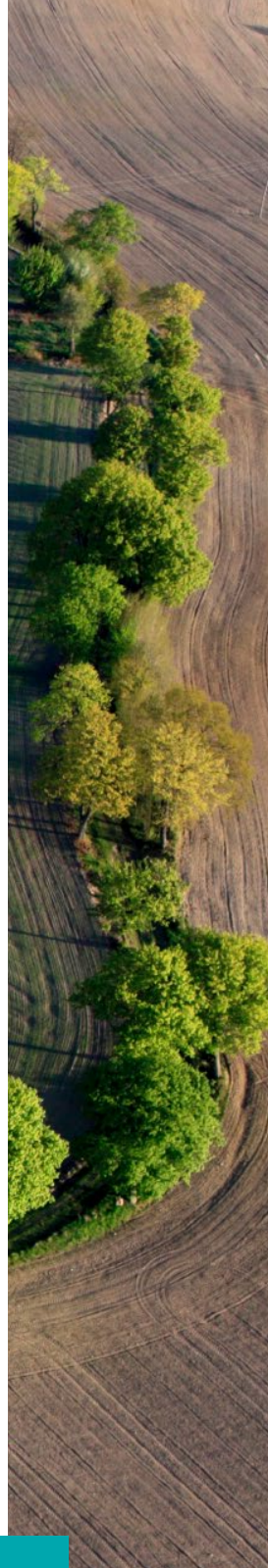
- Headquarters in Prague
- **13** Regional Offices,
- **64** District Offices,
- **1350** Employees





We prepare ground for the future

- **Before:** Restitution
Privatization
Property management
Land consolidation
- **Today:** Conceptual landscaping
Adaptation to climate changes
Revitalization of agricultural land
Sustainability farming

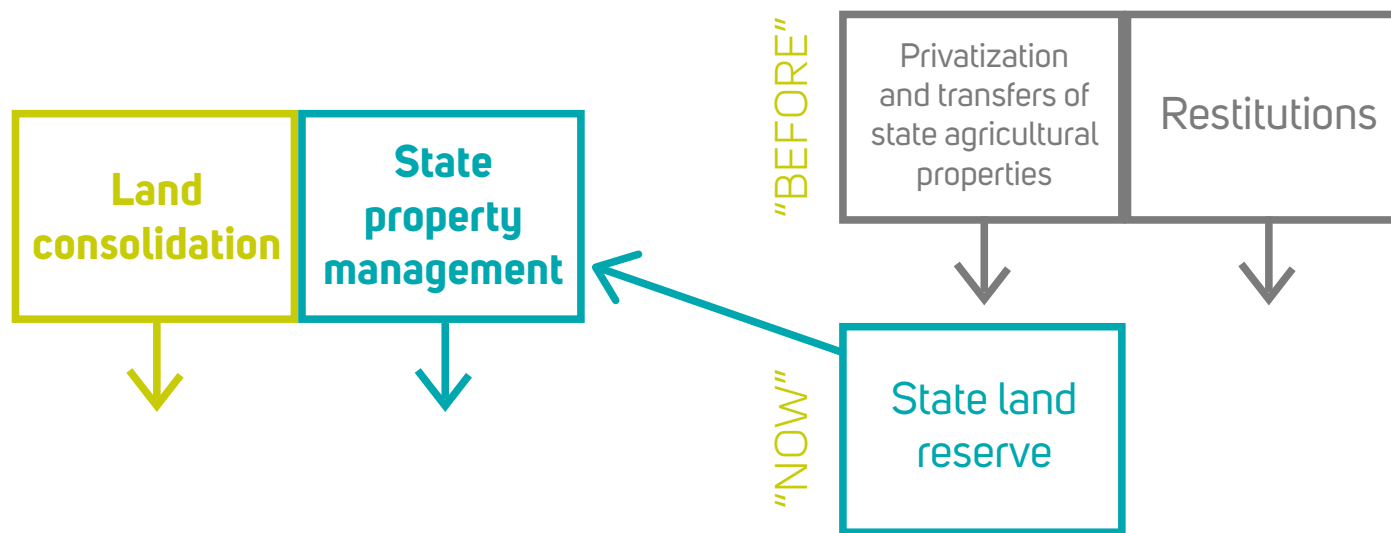




State Land Office

In society-wide context

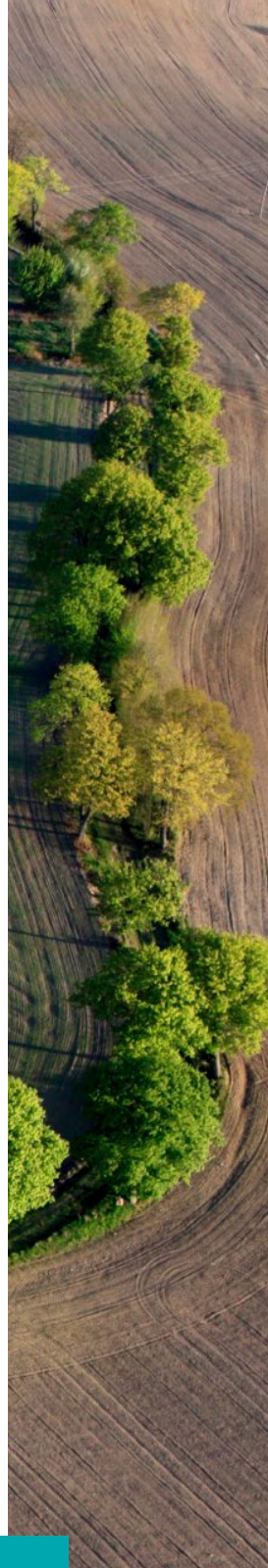
PRIORITY ACTIVITIES:





Common sense = landscape and soil sustainability

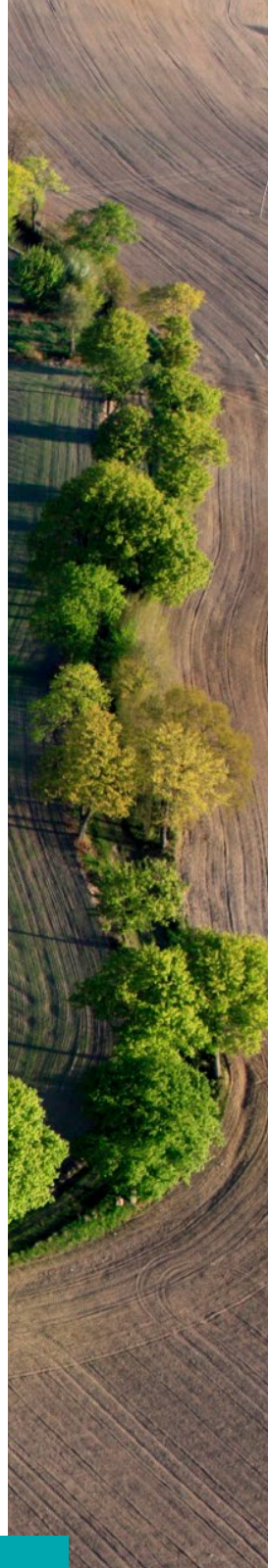
- Accent on public interest
- Long-term conceptual design activities
- Active participation of owners and farmers – citizens living in the rural area (the principle of local democracy)
- Mitigating of negative impacts of climate change
- Floods and Droughts prevention
- Conditions for protection of the environment and natural resources



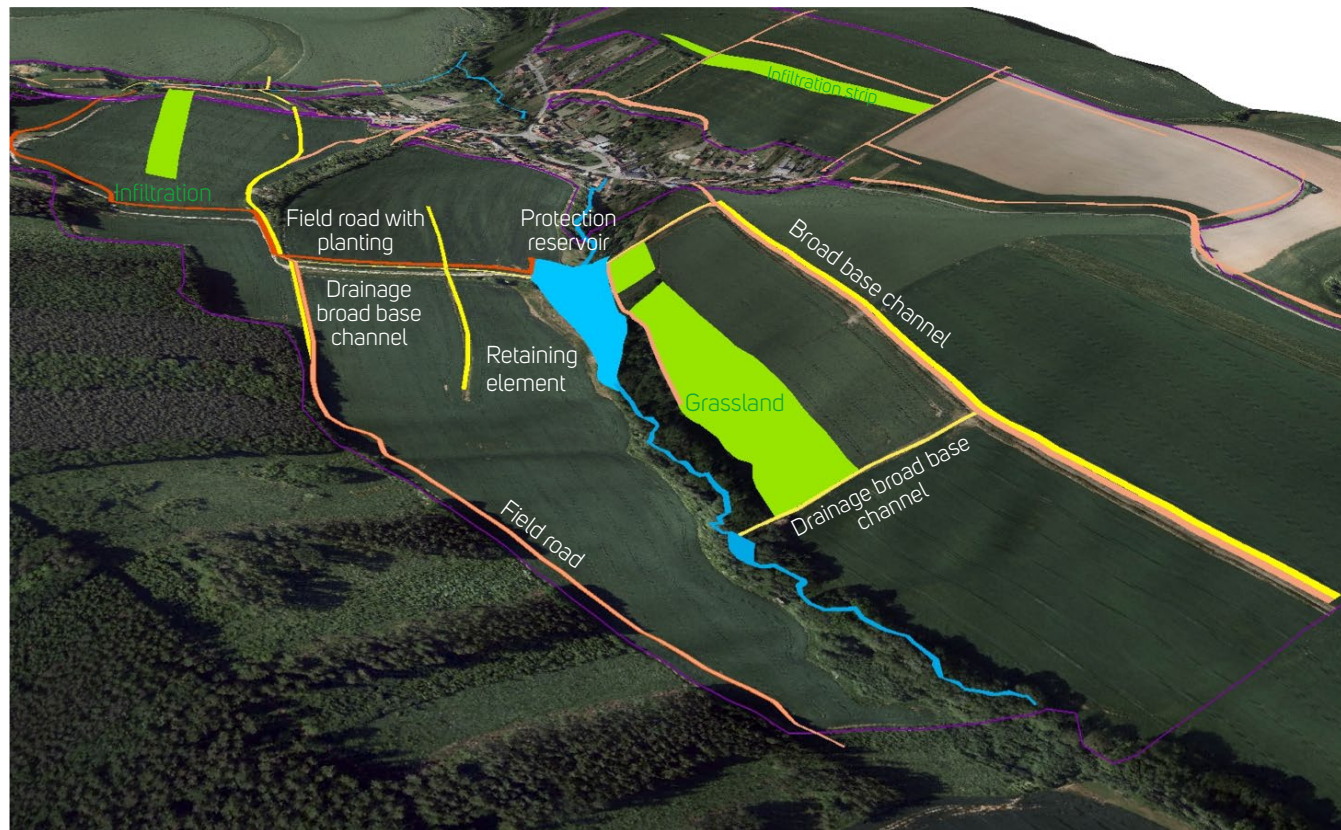


Main purpose of complex land consolidation

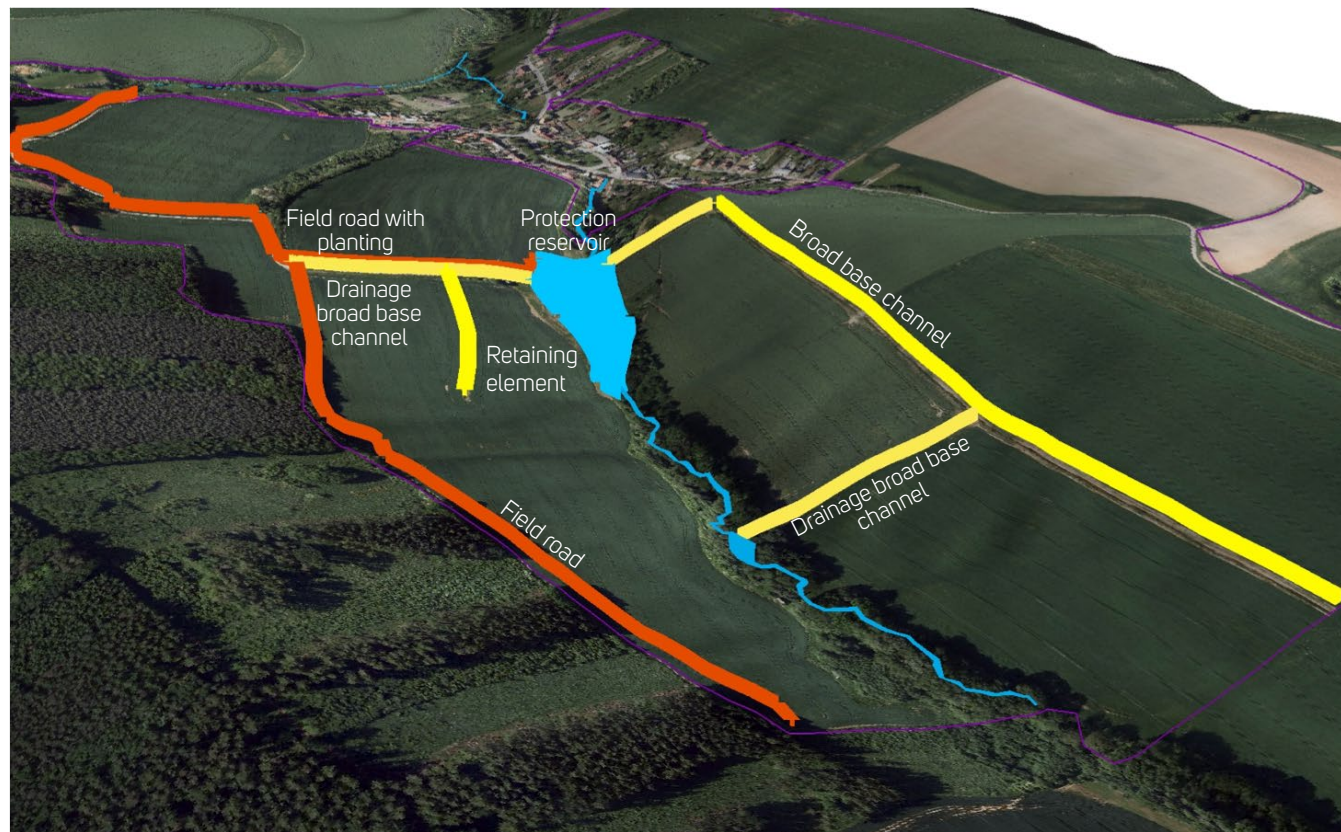
- Implement optimal functioning of each plot or plots system
- Transfer of state strategy for landscaping into local, polyfunctional and interlinked measures
- Effectively retain water in landscape and soil, prevent flooding and soil erosion
- Finalize green infrastructure (biocentres etc)



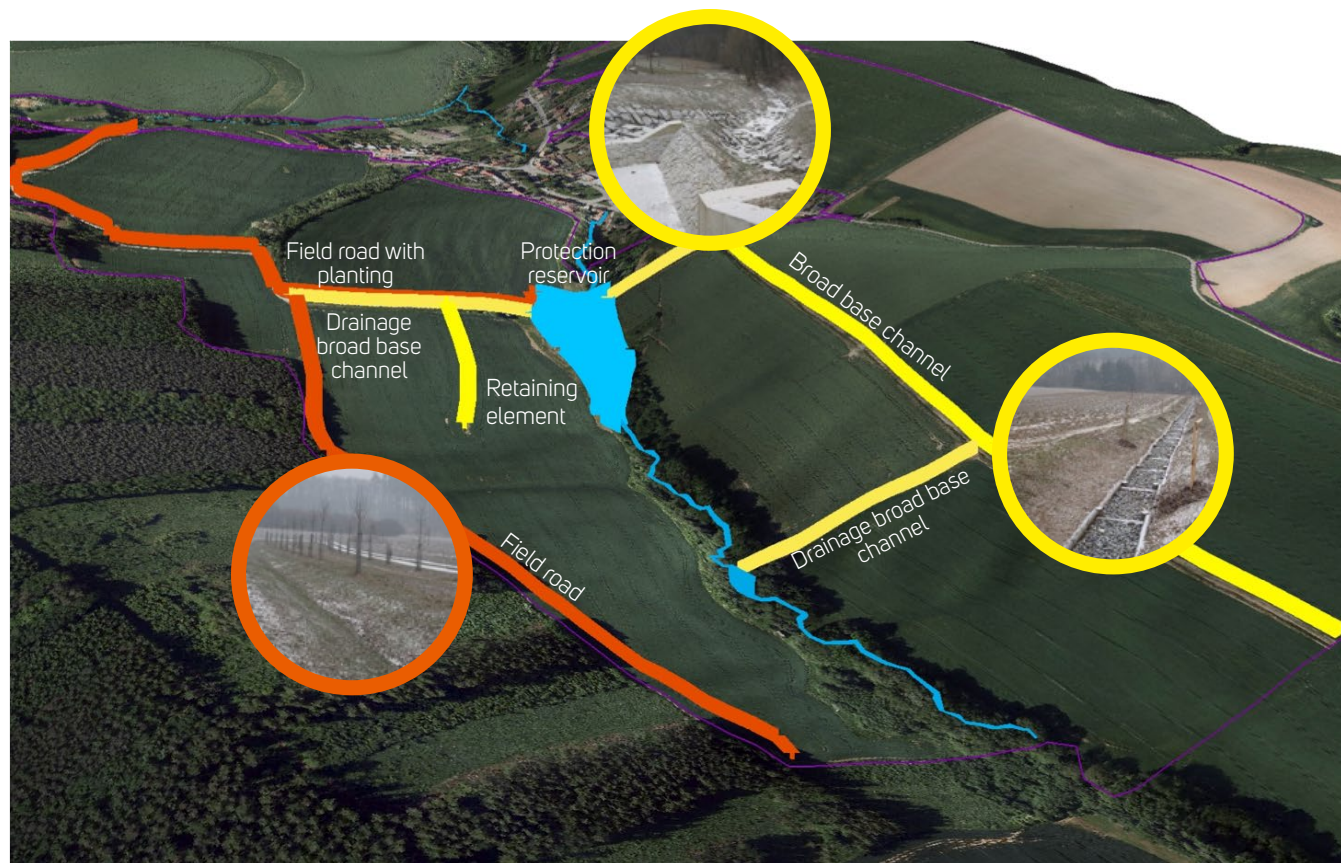
Design and realization of complex land consolidation



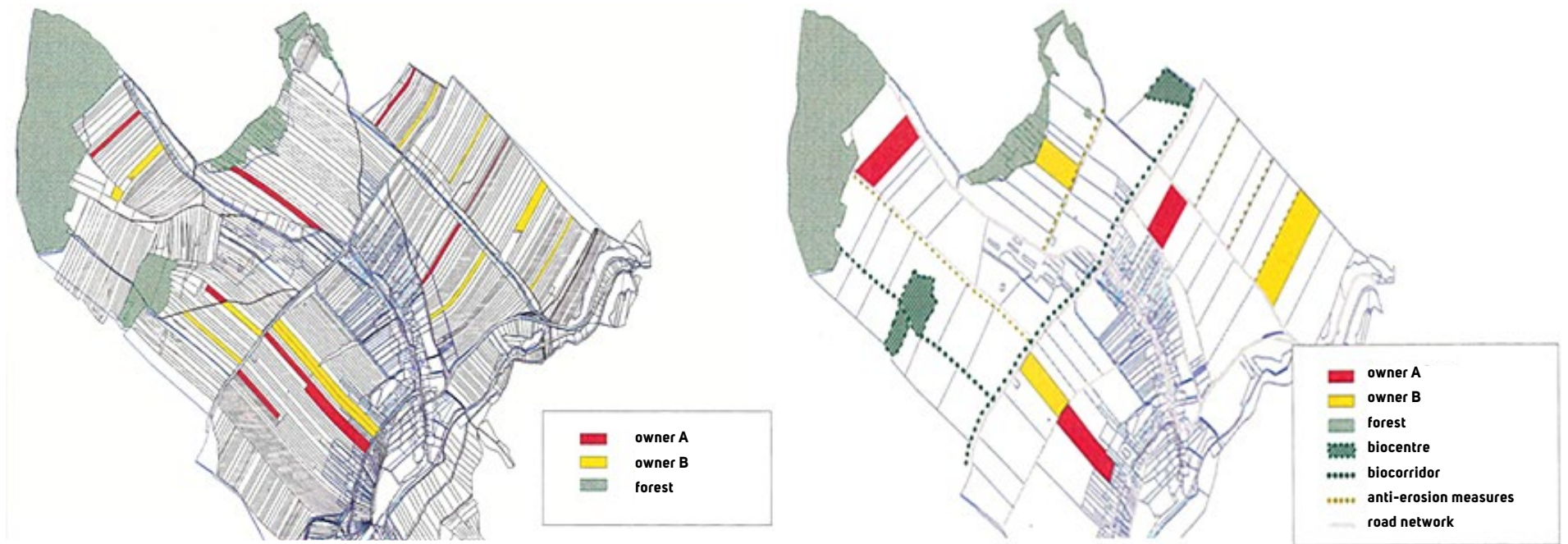
Design and realization of complex land consolidation



Design and realization of complex land consolidation



Design and realization of complex land consolidation



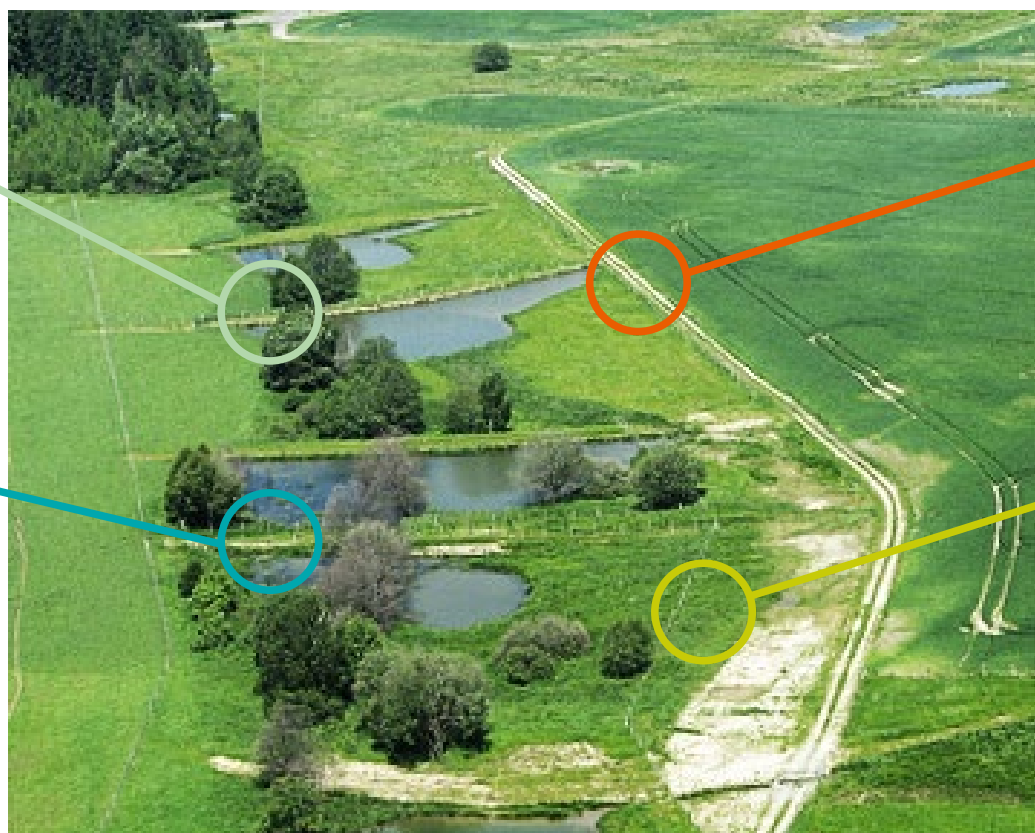
Landscaping and soil-water management examples

Parcelling plots with new terraces and hedgerowes

New biocoridors for retaining water and protecting flora and fauna

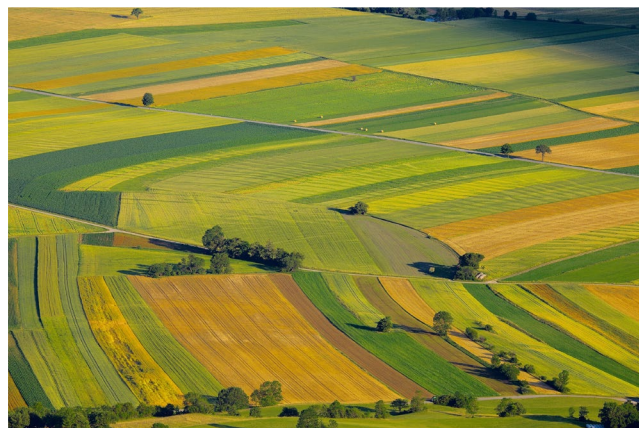
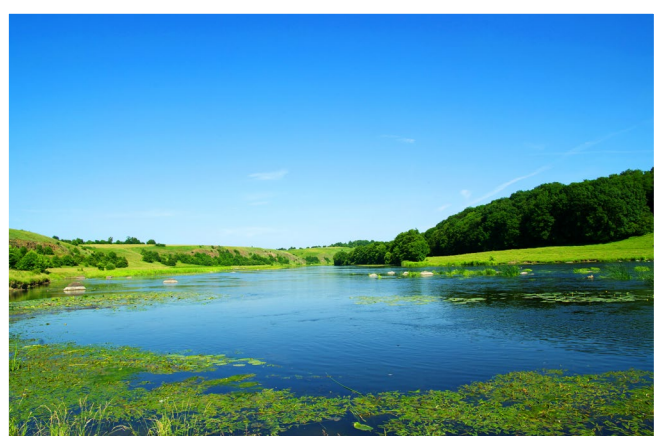
Track field road with drainage

Draining of water into polders, water reservoirs and wetlands





Ideal resulting "appearance" of landscape

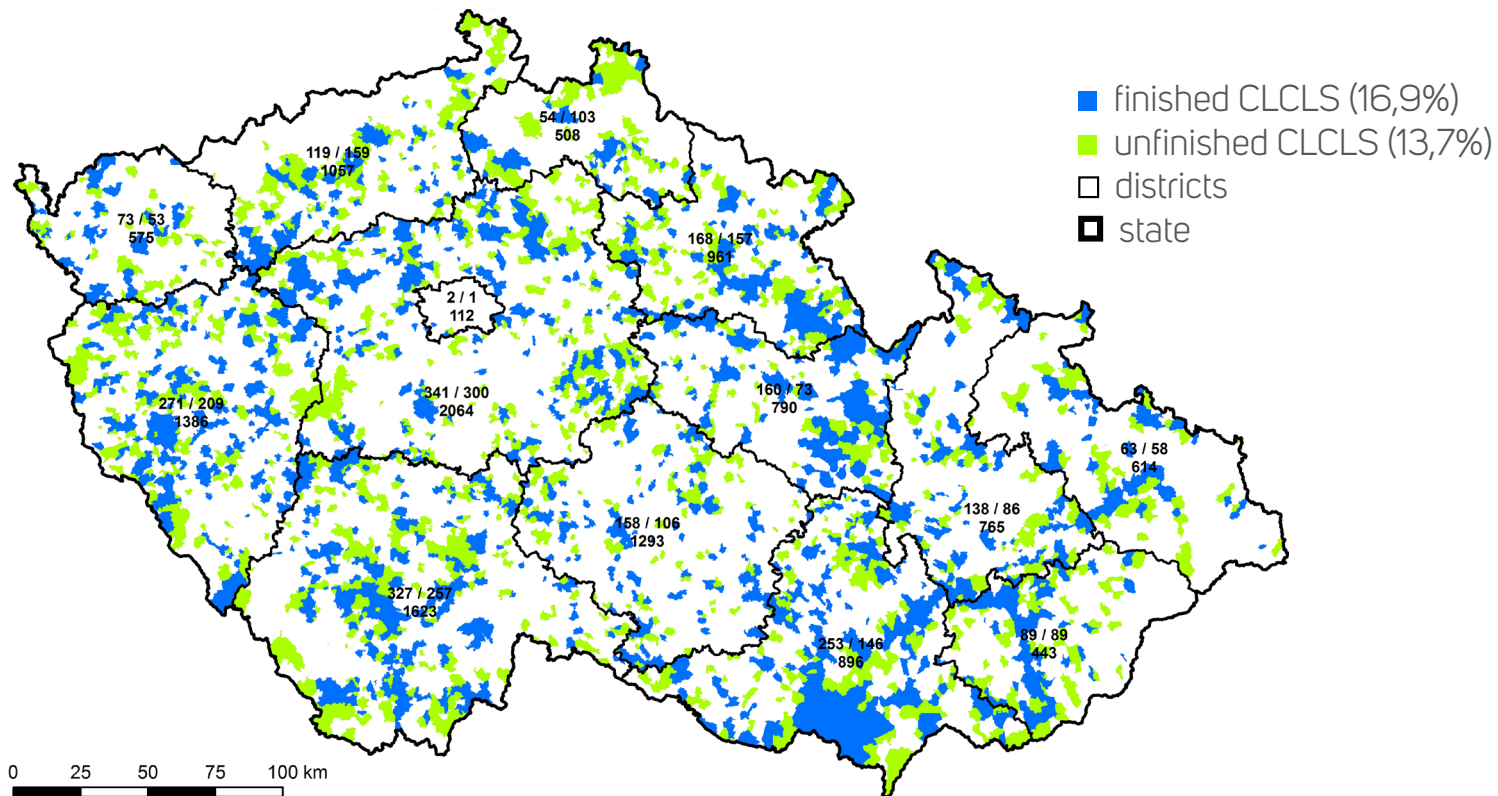


Complex land consolidation state (CLCLS)

■ august 2017

■ **73/53** number of k. ú. with unfinished/finished CLCLS in the district

■ **575** total number of k. ú. in district





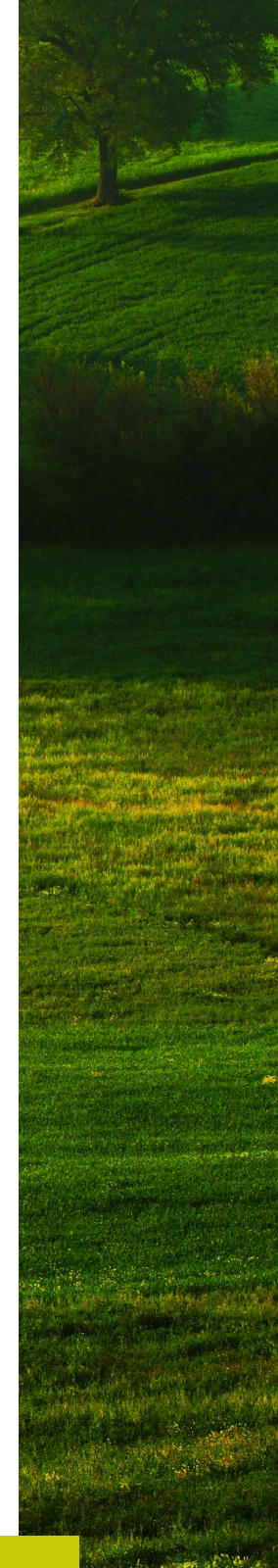
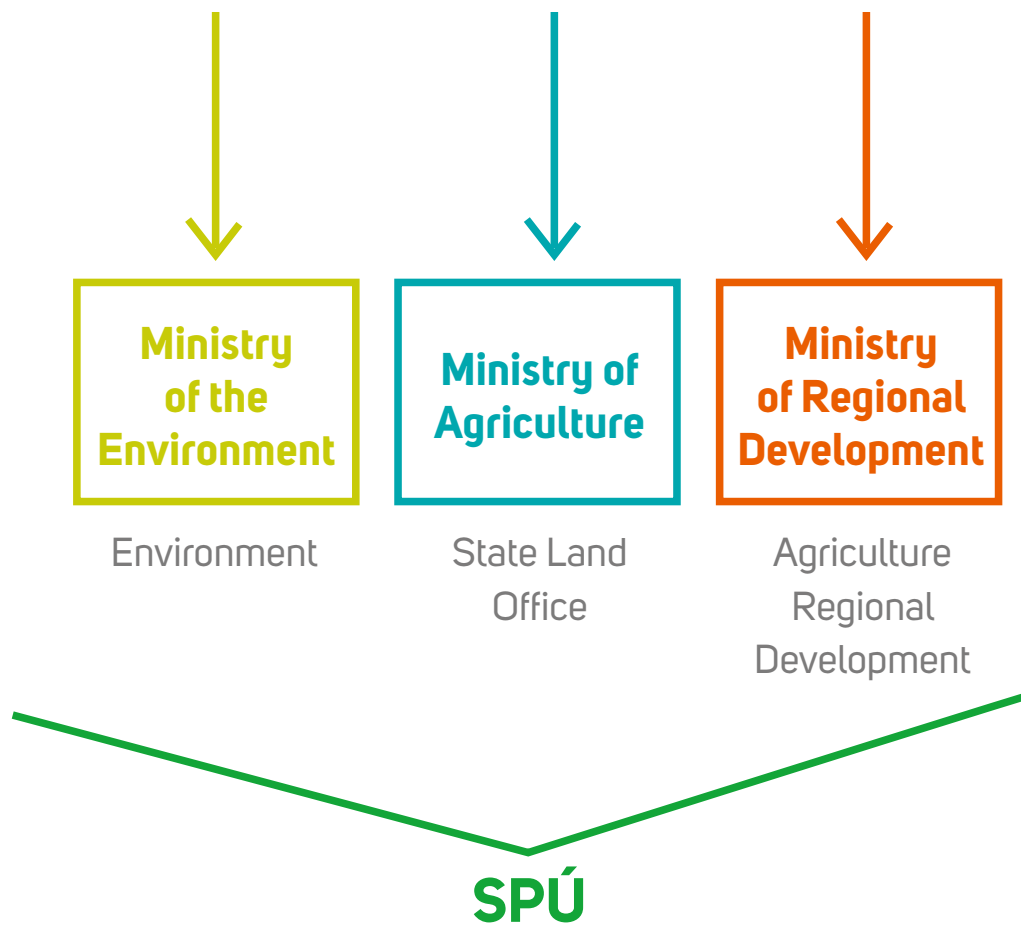
PART 02

IMPLEMENTATION OF EUROPEAN LANDSCAPE CONVENTION IN CZECH REPUBLIC

COORDINATION
OF ACTIVITIES
OF STATE ADMINISTRATION



European Landscape Convention

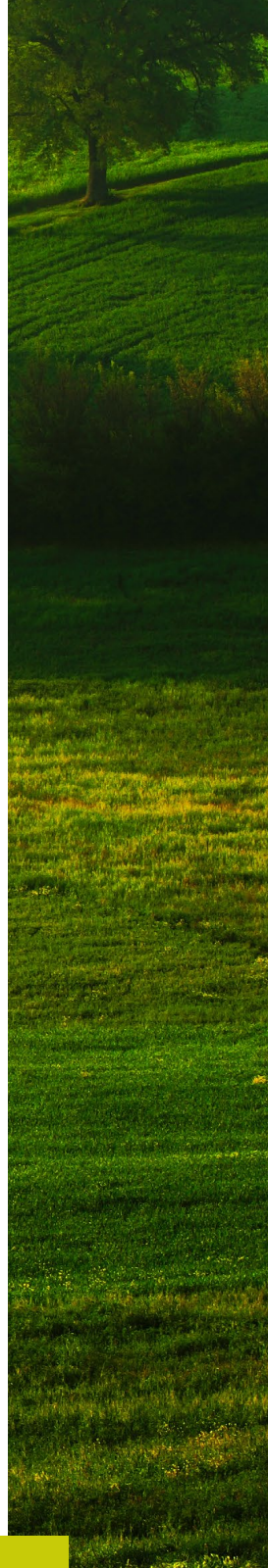




Coordination of activities

WHAT WE DO... MUST MAKE SENSE

- Coordination through a single entity and a common goal:
a cure for powers that have been split up and partial systems
- State Land Office – logical coordinator – “on the ground”
it has most of “its” people close to measures
- Harmonisation of legislative amendments at individual ministries –
it’s common sense
- Models of co-operation between the government/state administration
and universities and expert institutes = preparation of specialists for state
administration



Preparation of new experts

STATE LAND OFFICE IS INVOLVED IN THE EDUCATION OF STUDENTS AND PREPARE NEW EXPERTS FOR WORK

COOPERATION AGREEMENTS WITH UNIVERSITIES

- Mendel University in Brno, University of South Bohemia in České Budějovce, Czech University of Life Sciences Prague, Palacký University Olomouc, Brno University of Technology, Jan Evangelista Purkyně University
- Modification of teaching in the area of State Land Office activities
- Support of topic for dissertations and theses
- Accent on practical training






PART 03

SUPPORT FOR IMPLEMENTATION OF LOCAL DEMOCRACY

MOTIVATION, SIMPLIFICATION
OF ADMINISTRATION,
LIMITATION OF BUREAUCRACY,
EDUCATIONAL ACTIVITIES



**“ONE EXAMPLE
ON THE GROUND IS BETTER
THAN TEN ON THE PAPER”**



Parties to proceedings on land consolidation

Land owners /
/ users farmers

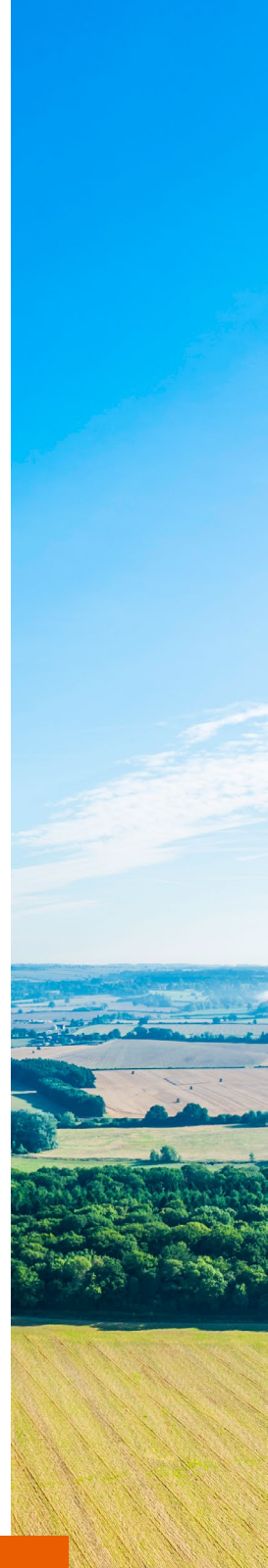
Assembly of
Representatives;
local experts, old locals

Representatives
of municipalities

Interest associations,
societies

The state
administration body

**“IF YOU WANT TO CHANGE THE WORLD,
START WITH WHAT’S ON YOUR DOORSTEP.”**

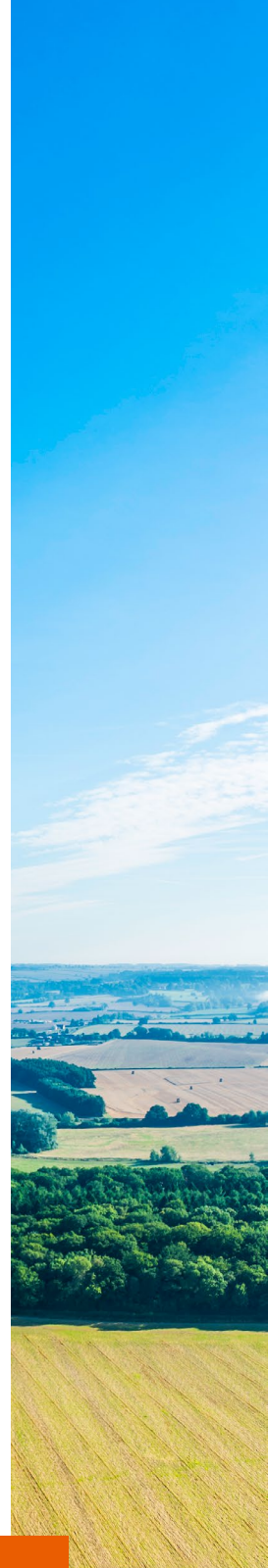




Implementation of European Landscape Convention locally

WHAT LIMIT US...

- Sanctions dominate over motivation. This “kills” natural initiative
- Bureaucracy and complicated administration even where it would work more simply and with common sense
- One-size-fits-all approach to a different local water management and agro-ecological “needs”
- Lack of knowledge and trust in land consolidation process: small educational activities in the regions





MOTTO FOR FUTURE?

**LET'S LOOK AT THINGS AGAIN
AND LET'S SEARCH FOR SIMPLE
SOLUTIONS IN TIMELESS CONTEXTS!**

THANK YOU!